

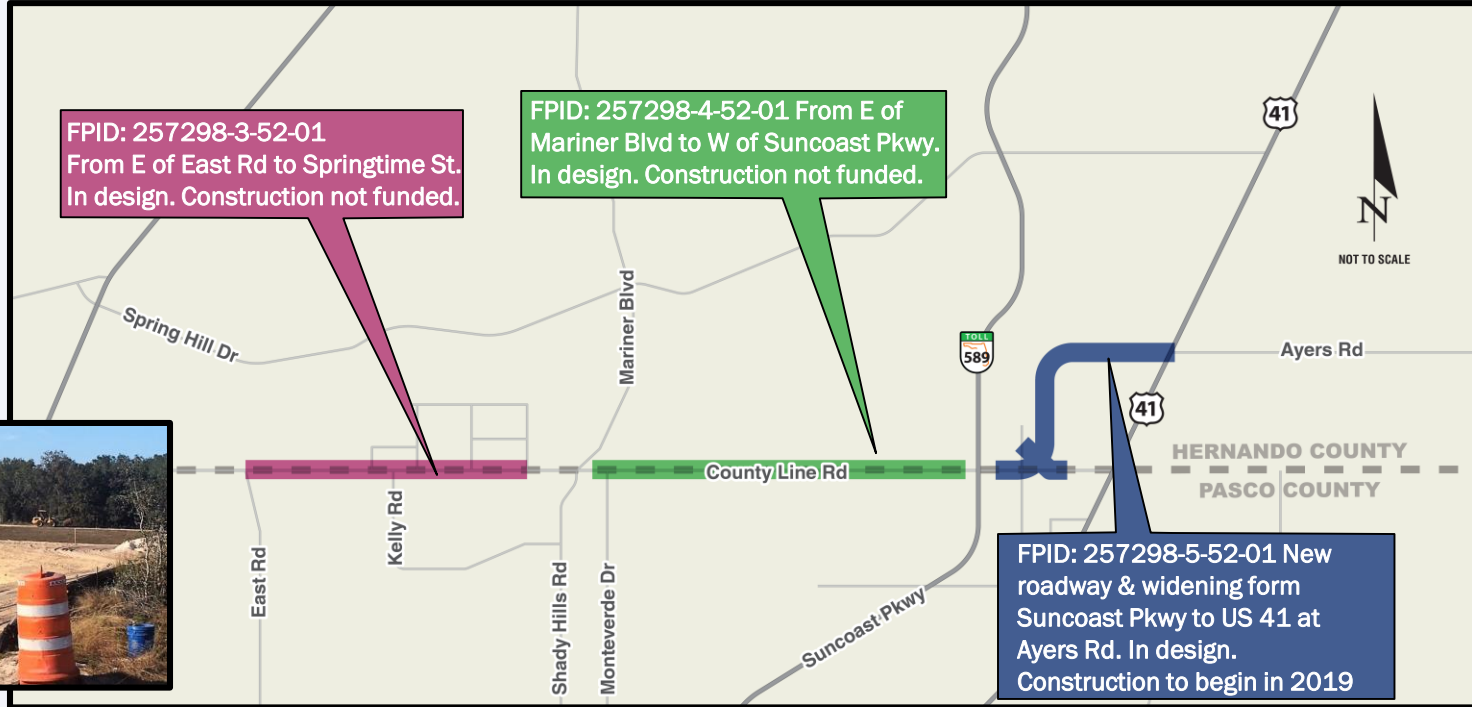


# Tampa Bay Next Update and Major Projects in Pasco County

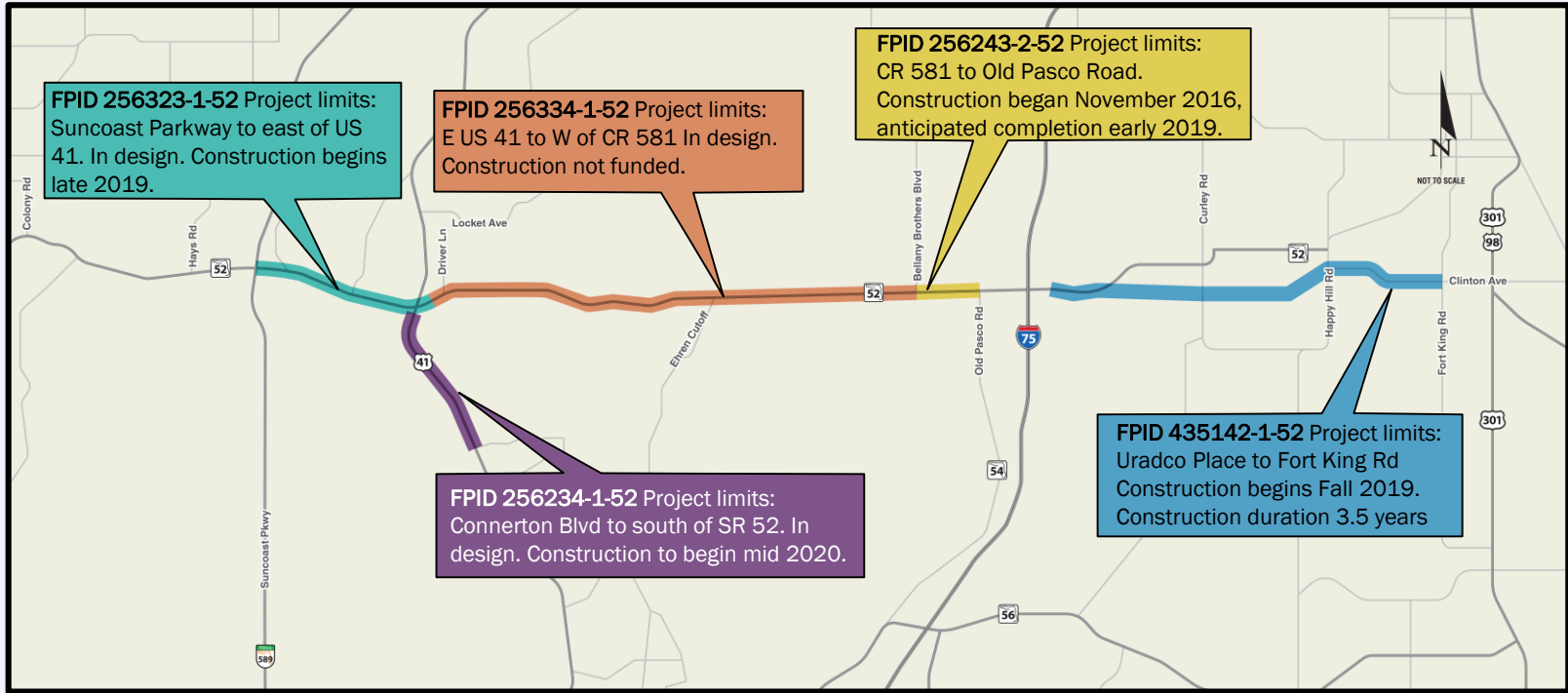
June 11, 2019



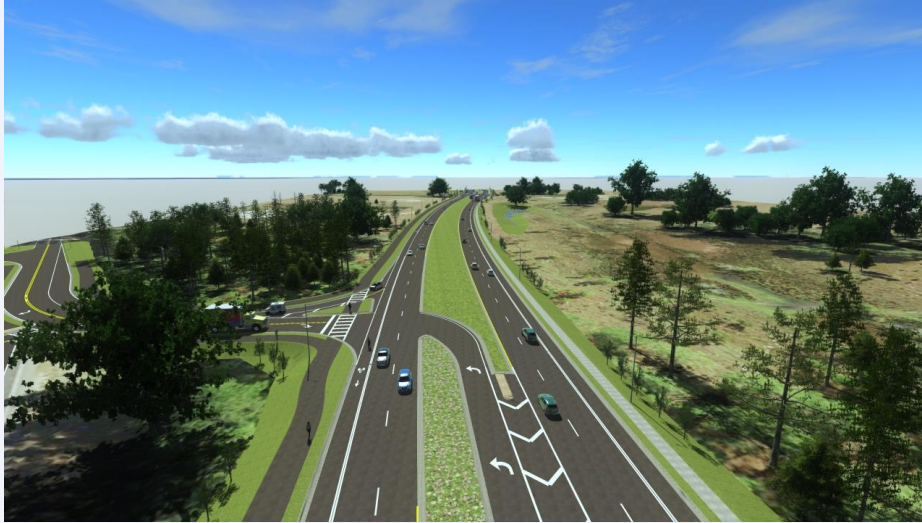
# County Line Road Projects



# SR 52 Projects



# SR 52 Realignment Update



## About the Project:

- The realignment will be a four-lane urban facility that will serve as an additional east-west route between I-75 and US 301.
- New SR 52 will be south of the current alignment.
- Approximately 8.5 miles of the existing SR 52 will become CR 52.

**Construction Begins:** Fall 2019

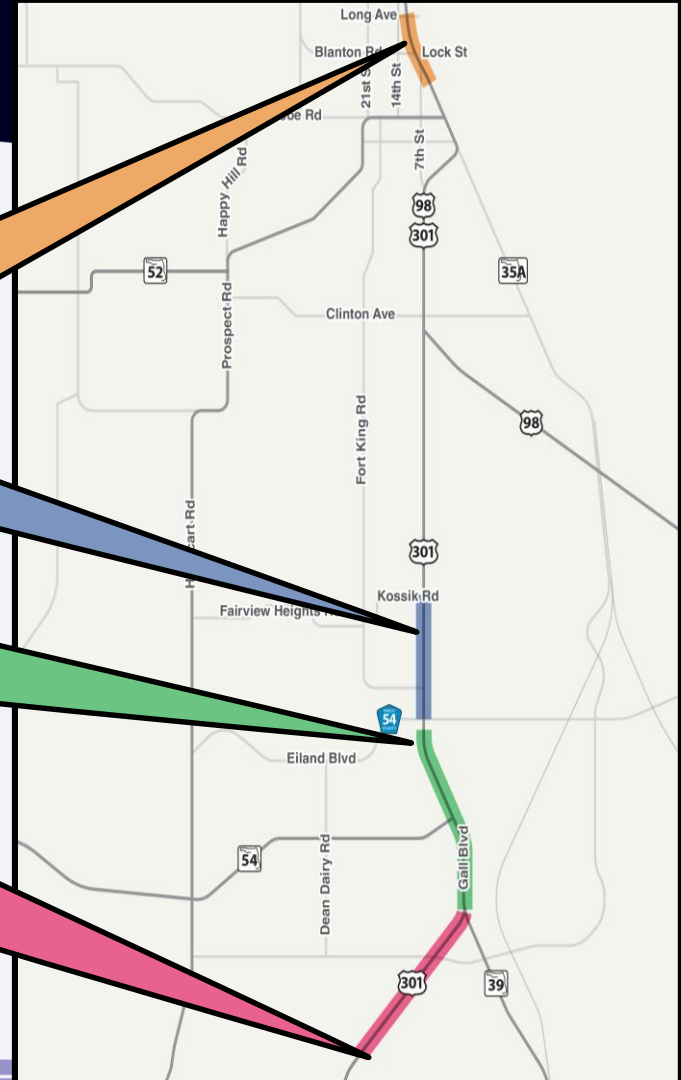
# US 301 Projects

**FPID 429075-2-52** US 301/US 98 Resurfacing/bike lanes from Pond Avenue to north of Long Avenue/Pioneer Museum Road. Construction anticipated to begin Summer 2019 and be complete in early 2020.

**FPID 408075-2-52** US 301 Widening from four to six lanes from CR 54/Eiland Blvd to north of Kossik Rd. Construction not funded

**FPID 256422-2-52** Project under reevaluation to incorporate City of Zephyrhills short term and long term transportation needs. Construction not funded.

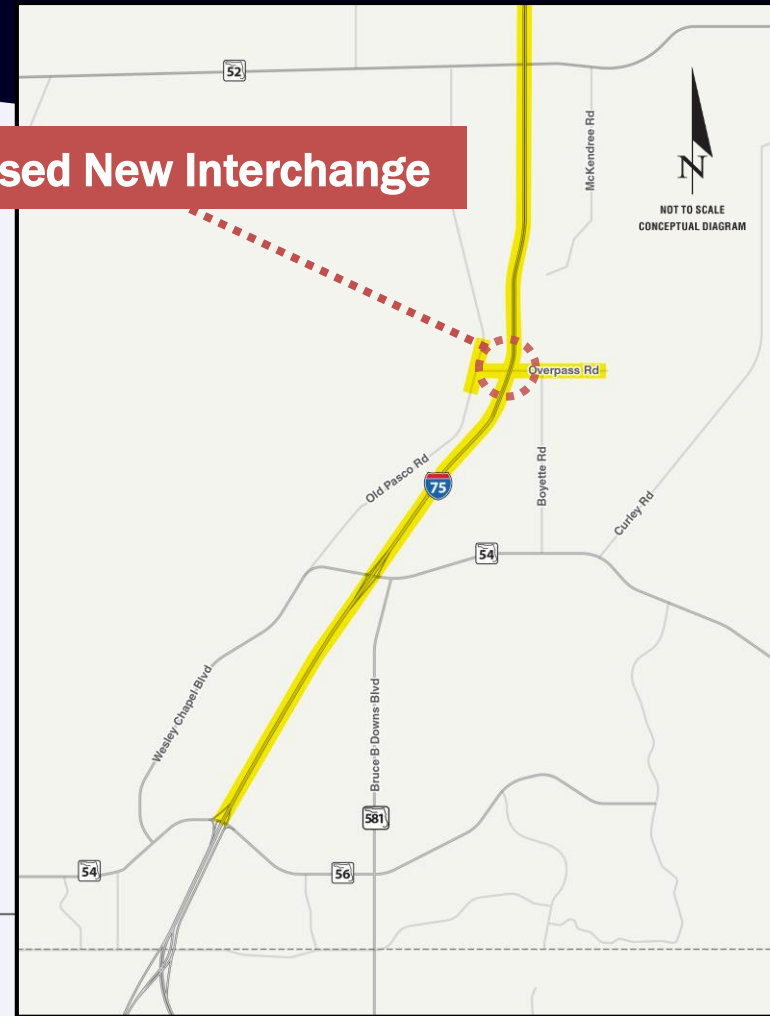
**FPID 416564-2-52** Project will widen US 301 to four lane divided roadway with medians. Includes bike lanes and sidewalk on east side and shared use path on west side. In design. ROW acquisition to begin in 2020. Construction not funded



# I-75 at Overpass Road

- New diamond interchange
- Flyover ramp to provide access from westbound Overpass Road to southbound I-75
- Goal is to build out improvements and accommodate future partial displaced left interchange
- Widens Overpass Road
- Realigns Blair Drive and McKendree Road
- Project will be advertised in Spring 2020

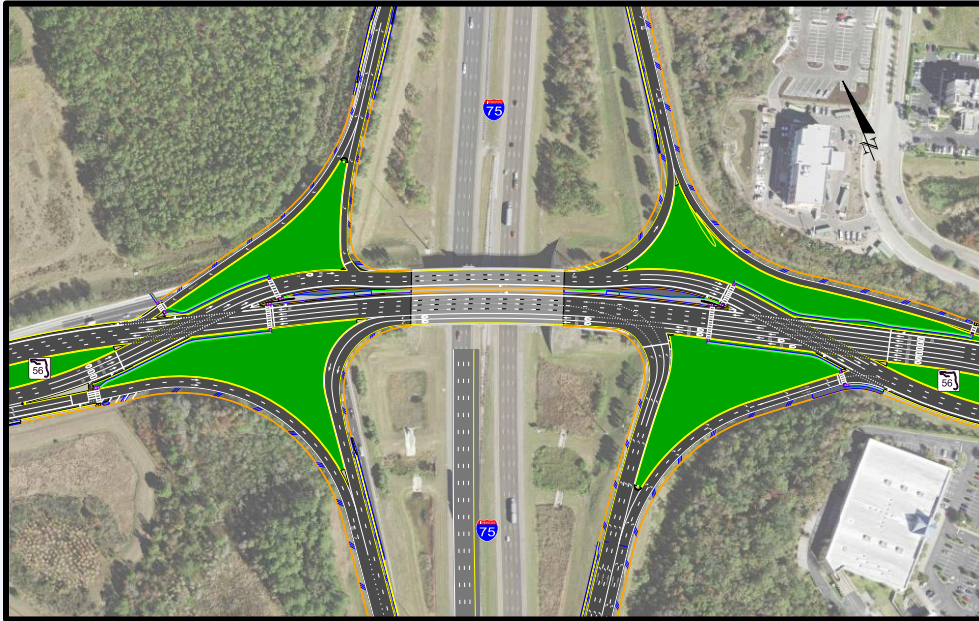
## Proposed New Interchange





# I-75 @ SR 56

## Diverging Diamond Interchange



### About the Project:

- Converts existing interchange to diverging diamond interchange
- More efficient design reduces travel times for motorists

**Project Limits:** East of CR54 & west of Cypress Ridge Boulevard

**Construction:** Currently underway  
**Anticipated Completion:** Late 2021

# SR 56 Extension Construction

## About the Project:

- Provides east-west corridor to alleviate traffic on SR 54
- Provides direct truck route for industrial development on Chancey Road Bypass
- Promotes development and growth for Zephyrhills area

**Project Limits:** From Meadow Pointe Dr. to U.S. 301

**Construction Completion**

**Anticipated:** Late 2019





# US 41/SR 54 Intersection

- FDOT is planning to complete a feasibility study on the US 41/SR 54 intersection
- Study will include at grade and grade separated intersection alternatives
- Study will follow alternatives recommended by the Pasco County Vision 54/56 taskforce and Pasco MPO Board
- Feasibility study anticipated to begin in early Summer 2019 and completed within one year\*

\*If additional PD&E study is required, project will take additional time

## Pasco County Vision 54/56 S.R. 54 /U.S. 41 Intersection Alternatives

Elevated express lanes at major intersections; express lanes on the ground for remainder; bus service in express lanes

Parallel Flow Intersection

Elevated lanes at major intersections; bus or rail in separate lanes combined with Continuous Flow Intersection

No-build - Maintain existing 6 lanes on the ground and maintain current transit service

# Additional Studies

## SR 56 Extension

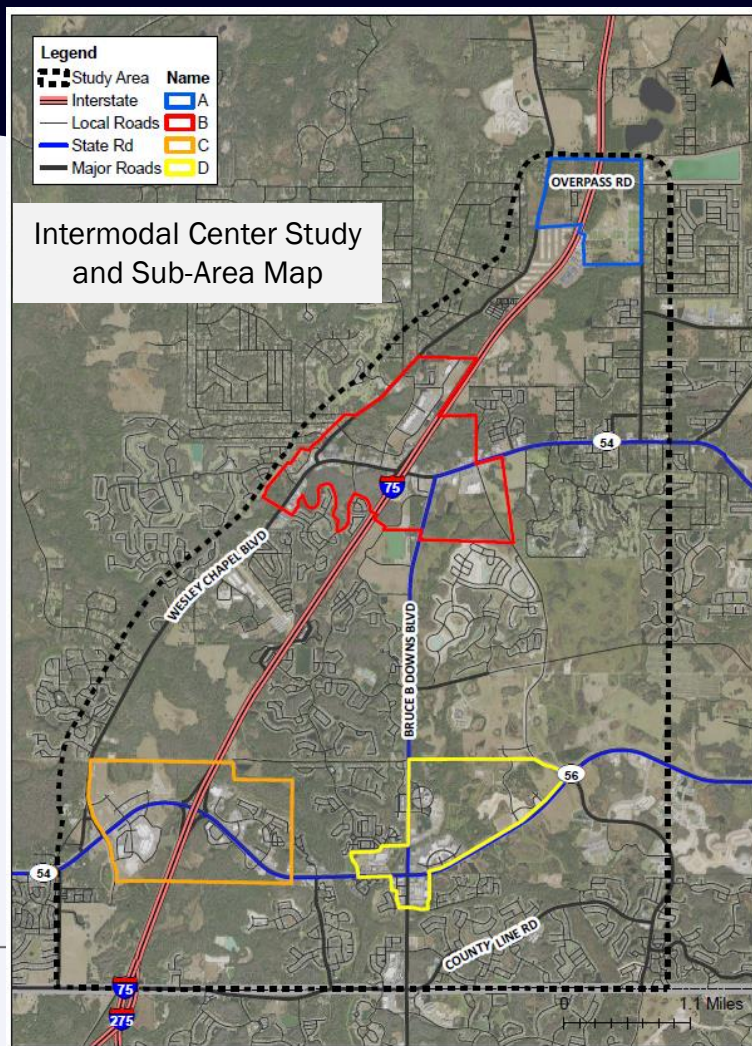
- Study requested by City of Zephyrhills to evaluate further extending SR 56 from US 301 to US 98 with connection to SR 39
- Project kickoff Spring 2019
- Project completion is anticipated in Spring 2020

## US 98/US 301 Intersection

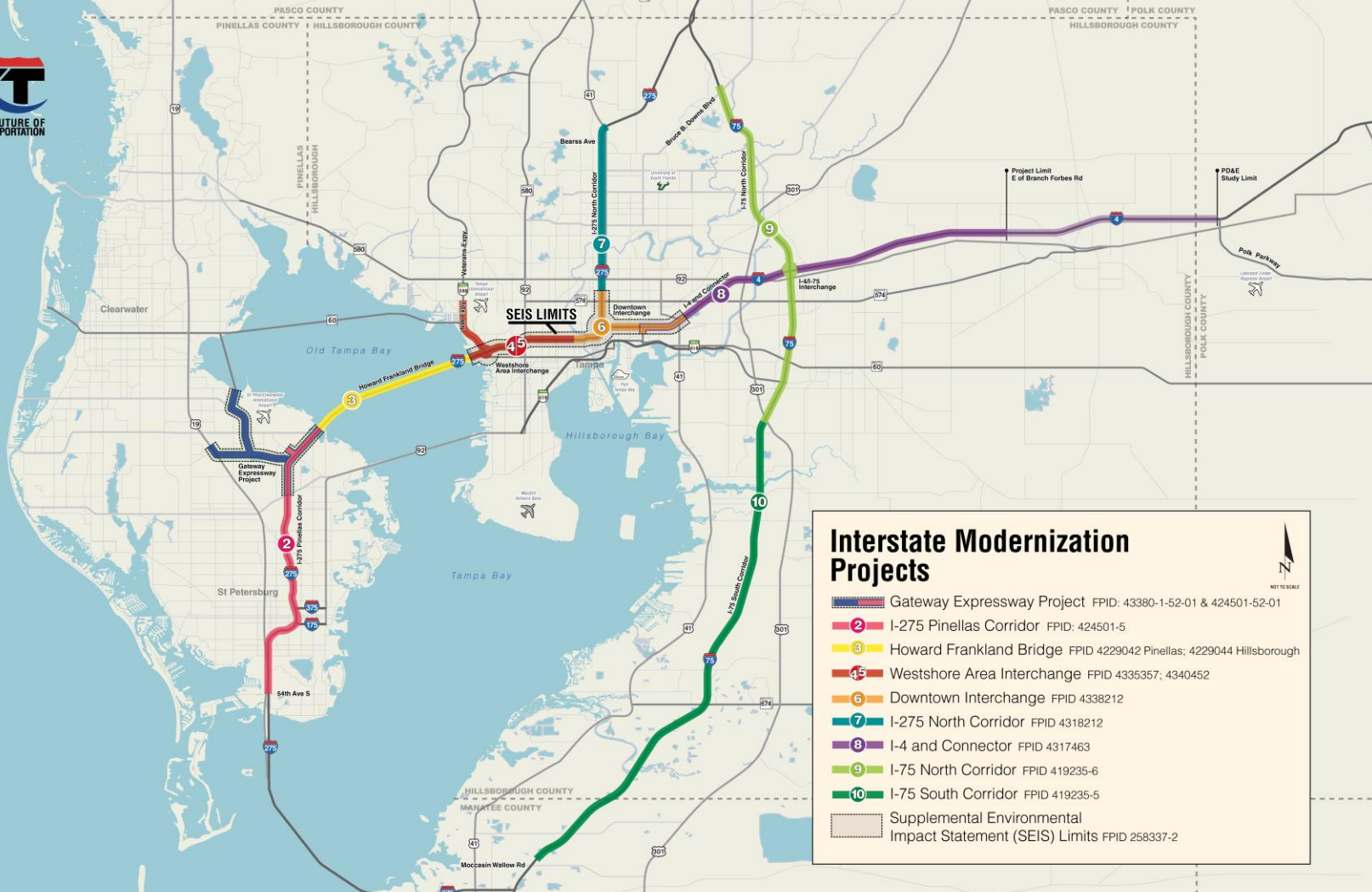
- Study requested by Pasco MPO to evaluate potential realignment of US 98 at US 301 intersection in the area of Clinton Ave (new SR 52)
- Study anticipated to begin Summer 2019 and be complete in early 2020
- Public Corridor Workshop anticipated in September 2019

# Wesley Chapel Area Intermodal Center

- Identifying a location for a new intermodal center
- Center will serve as a hub for local and regional transit
- Includes analysis of facility needs, cost, funding options, and design concepts
- Engagement with PCPT, Economic Development Department, Planning staff, and others on location, design, and facility needs



# Tampa Bay Next Updates



### Interstate Modernization Projects

- Gateway Expressway Project FPID: 43380-1-52-01 & 424501-52-01
- I-275 Pinellas Corridor FPID: 424501-5
- Howard Frankland Bridge FPID 4229042 Pinellas; 4229044 Hillsborough
- Westshore Area Interchange FPID 4335357; 4340452
- Downtown Interchange FPID 4338212
- I-275 North Corridor FPID 4318212
- I-4 and Connector FPID 4317463
- I-75 North Corridor FPID 419235-6
- I-75 South Corridor FPID 419235-5
- Supplemental Environmental Impact Statement (SEIS) Limits FPID 258337-2



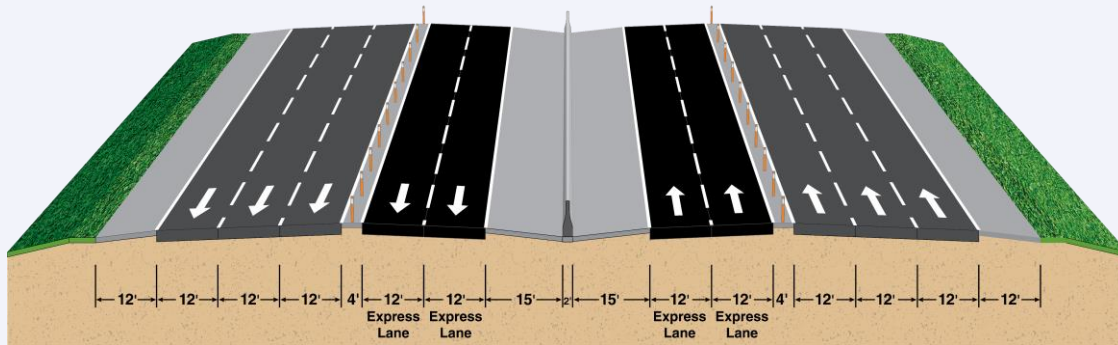
NOT TO SCALE



# I-275 Pinellas

## PD&E Reevaluation

- Lane continuity from 54<sup>th</sup> Ave S to Gandy Boulevard
- Evaluating two express lanes in each direction from I-375 to north of 4<sup>th</sup> Street North



# Howard Frankland Bridge

Cost Estimate: \$814.4 Million  
Construction to begin early 2020

- Construction of new bridge will replace existing northbound bridge
- Final design will provide:
  - 4 general purpose lanes in each direction
  - 2 express lanes in each direction
- Envelope on new bridge is designed to support future premium transit
- Bike/pedestrian trail will connect Pinellas and Hillsborough Counties

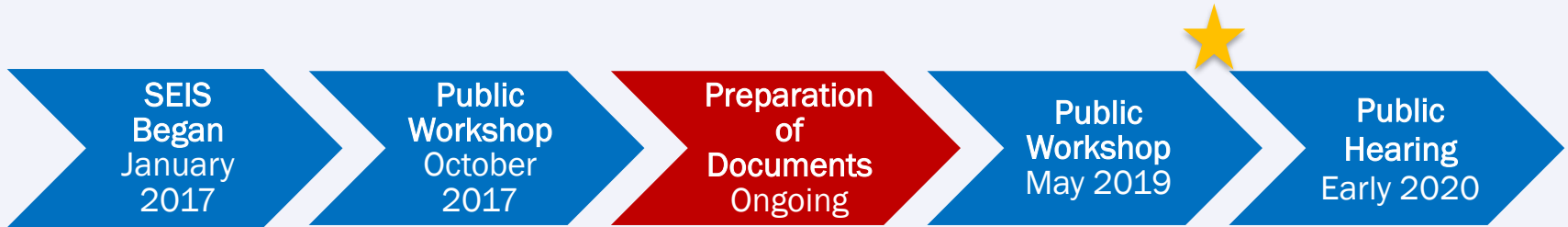


# Supplement Environmental Impact Statement (SEIS)



Draft documents were presented at the May 2019 Public Workshop and are available online at [www.tampainterstatestudy.com](http://www.tampainterstatestudy.com). Documents will remain open for public comment until after the Public Hearing in early 2020.

We are here



\*Typically, a Preferred Alternative is recommended after the May 2019 Public Workshop.

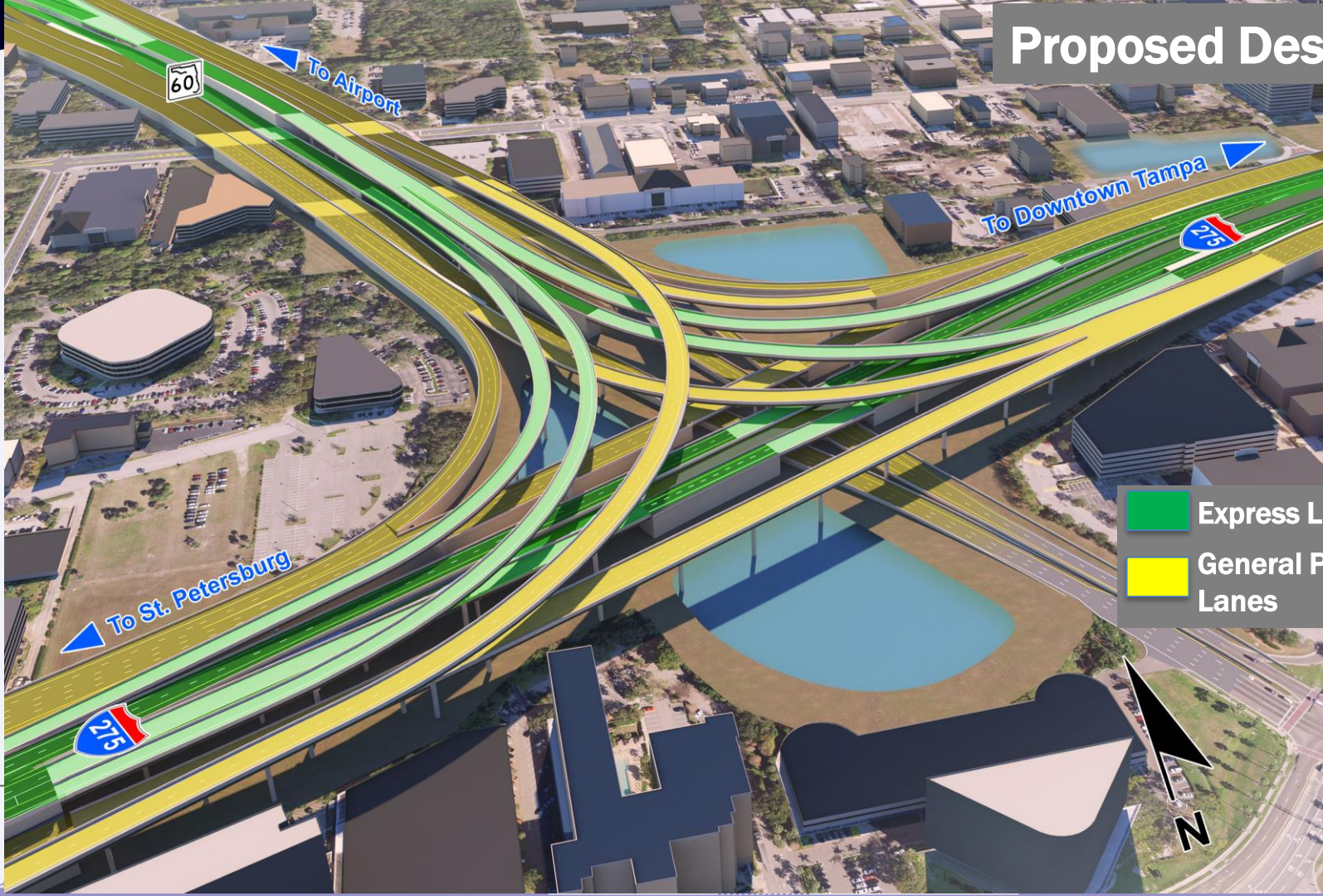


# Existing Conditions





# Proposed Design

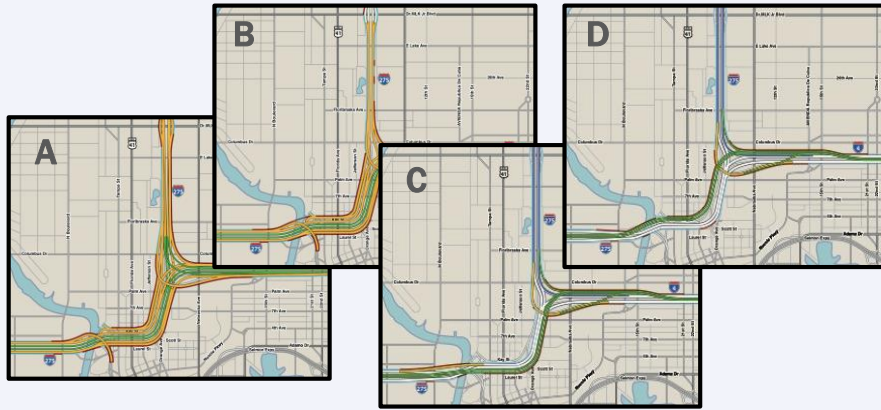


-  Express Lanes
-  General Purpose Lanes



# I-275/ I-4 Interchange

## Four Design Options



# I-275/I-4 Interchange Operational Improvements

- **3 improvements to address safety and traffic operations**
  - Southbound I-275 to Eastbound I-4
  - Westbound I-4 to Northbound I-275
  - Westbound I-4 to Southbound I-275

# I-275/I-4 Interchange Operational Improvements

Southbound I-275 to Eastbound I-4





# I-275/I-4 Interchange Operational Improvements

## Westbound I-4 to Northbound I-275



# I-275/I-4 Interchange Operational Improvements

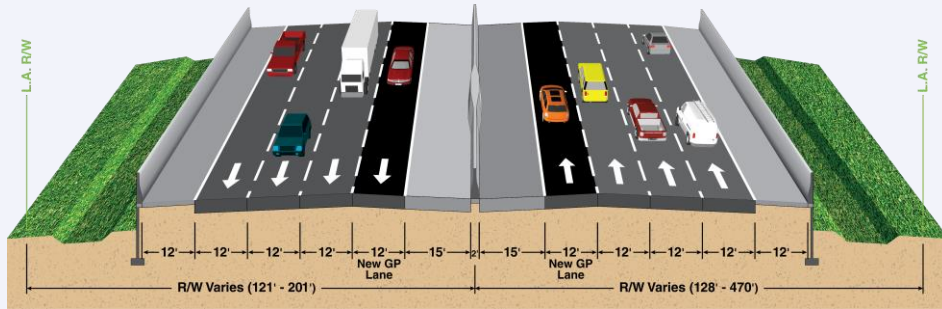
## Westbound I-4 to Southbound I-275





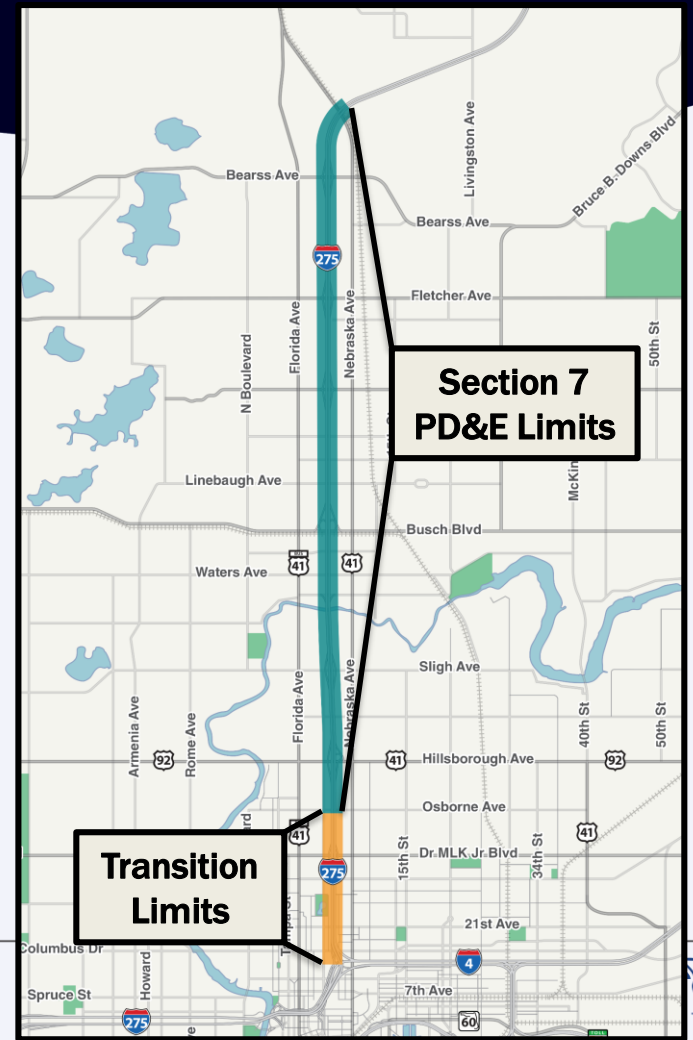
# I-275 Corridor North of Downtown Tampa

- Add one general purpose lane in each direction and hardened inside shoulders (Section 7)
- Operational Improvements (Transition)



## Preferred Typical Section

(4-general use lanes with full depth pavement on inside shoulders)





**Thank You**