



TAMPA BAY NEXT UPDATE

Marshall Hampton, P.E.

FDOT District Seven

Wednesday, September 12, 2018

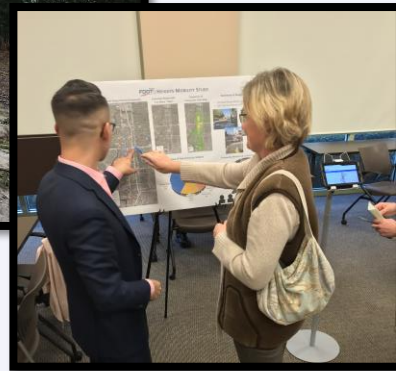
Public Feedback: Do Something

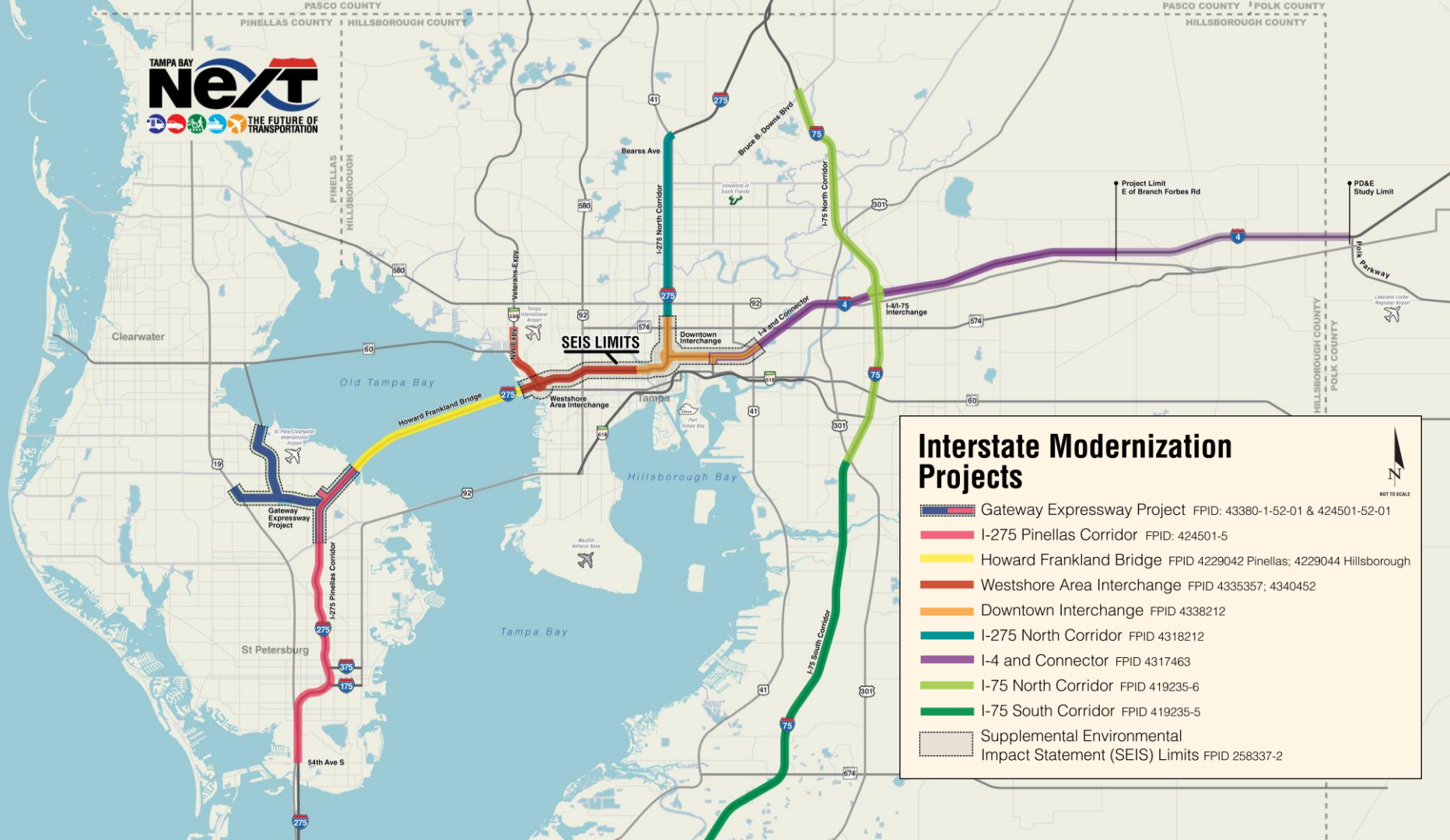
"Cut-through traffic is a problem in my neighborhood."

"I'm sick of daily traffic backups. Fix the bottlenecks."

"I don't feel safe biking or walking."

"Improve traffic signals and timing."





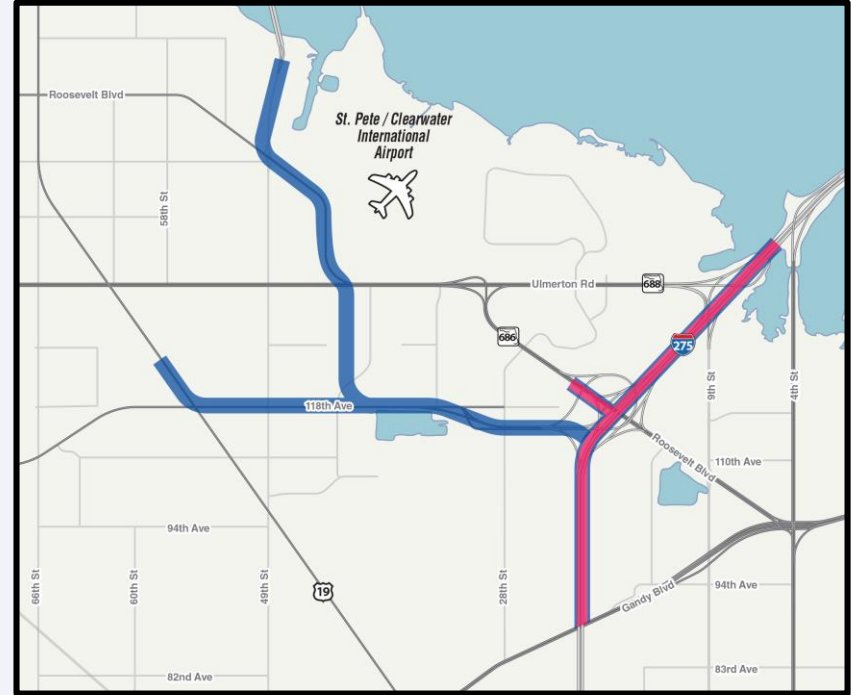
Interstate Modernization Projects

- Gateway Expressway Project FPID: 43380-1-52-01 & 424501-52-01
- I-275 Pinellas Corridor FPID: 424501-5
- Howard Frankland Bridge FPID 4229042 Pinellas; 4229044 Hillsborough
- Westshore Area Interchange FPID 4335357; 4340452
- Downtown Interchange FPID 4338212
- I-275 North Corridor FPID 4318212
- I-4 and Connector FPID 4317463
- I-75 North Corridor FPID 419235-6
- I-75 South Corridor FPID 419235-5
- Supplemental Environmental Impact Statement (SEIS) Limits FPID 258337-2

NOT TO SCALE

Gateway Expressway

- Construction is Underway
- Scheduled to be completed in 2021
- Adds Express Lanes to I-275
- Constructs 2 New Elevated Expressways
 - From US 19 to I-275
 - From the Bayside Bridge to I-275



Howard Frankland Bridge

**Industry Forum:
September 17, 2018**

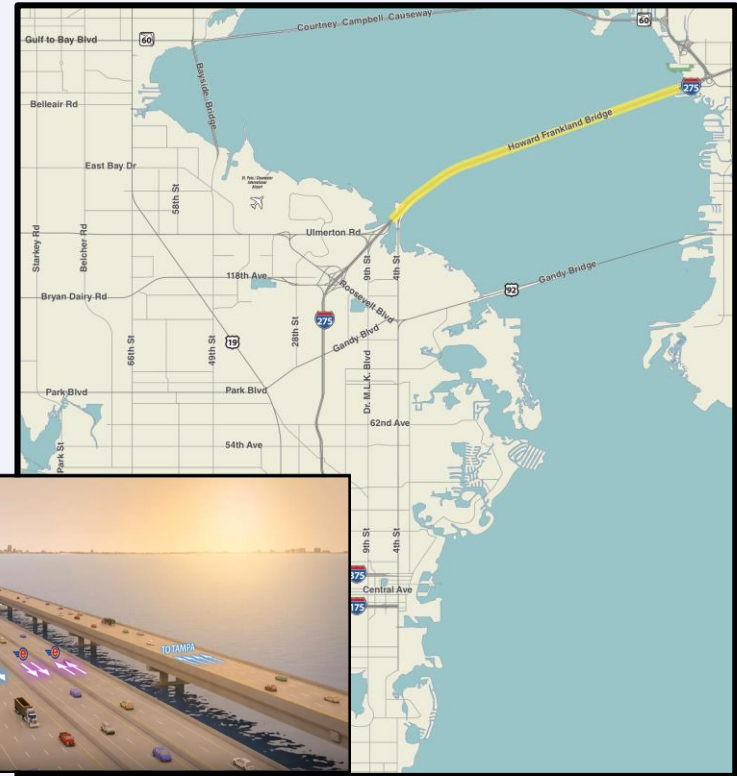
Cost Estimate: \$814.4 Million

Draft RFP Released: September 10, 2018

Design-Build Ad Date: December 10, 2018

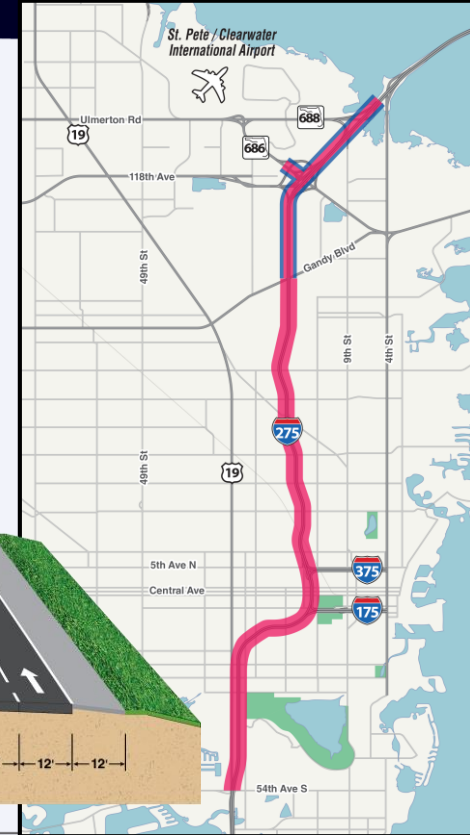
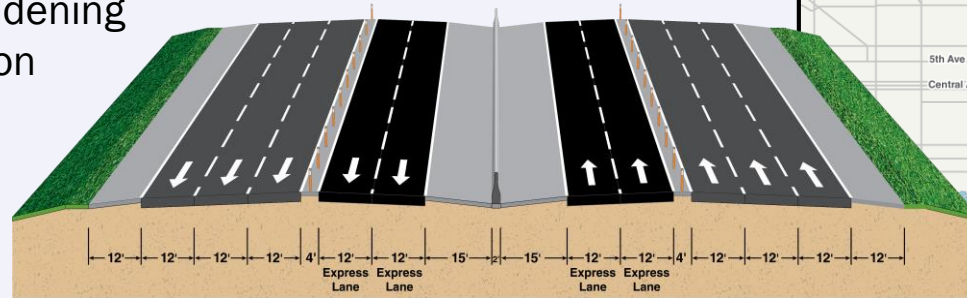
Contract Letting: October 8, 2019

Contract Award: November 8, 2019

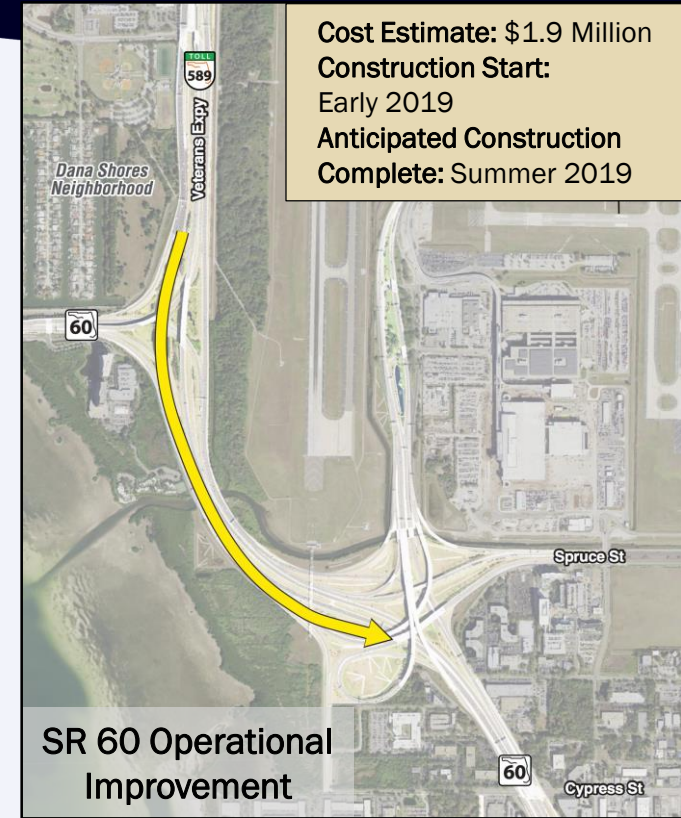


I-275 Pinellas Corridor

- Lane continuity from 54th Ave South to Gandy Blvd.
- Reviewing extending express lanes south to Downtown St. Pete
- Opportunity to integrate transit on corridor
- Working with TBARTA to accommodate RTFP Catalyst Project recommendations where feasible
- Project likely to include:
 - Right of way for ponds (working with local jurisdictions on potential sites)
 - Concrete pavement widening
 - Shoulder reconstruction
 - Bridge widening
 - Noise walls
- Public hearing Spring 2019

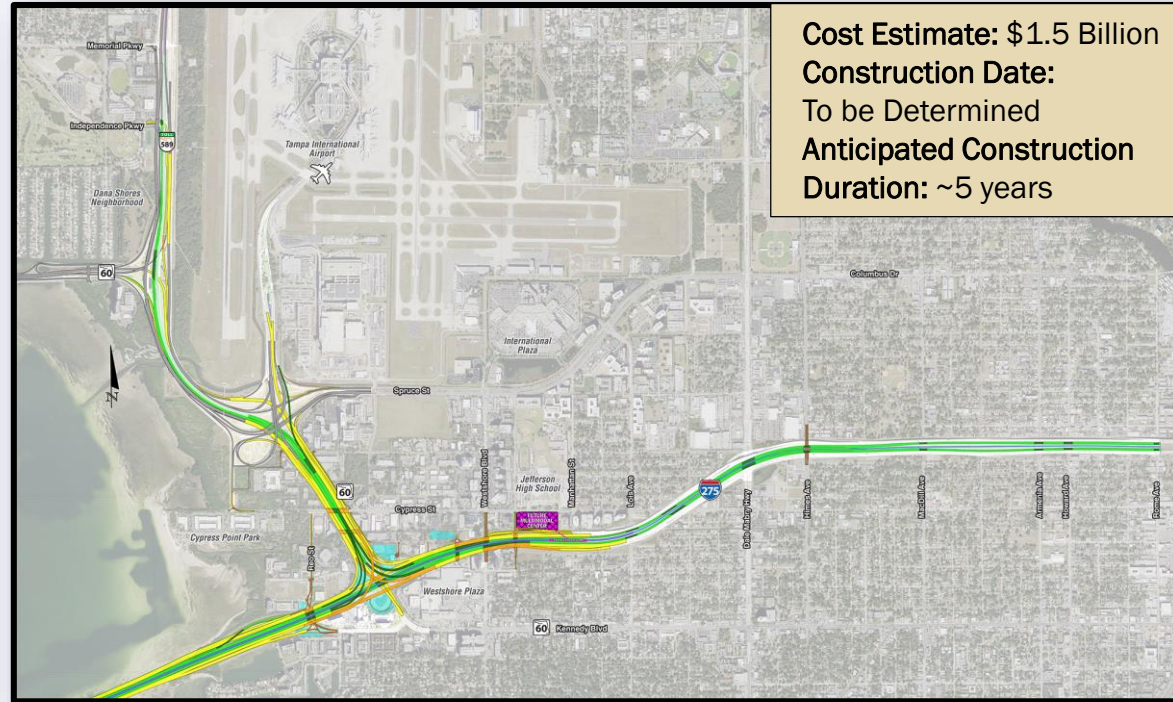


Operational Improvements



Westshore Interchange Reconstruction

- Reconstructed interchange will alleviate existing bottlenecks
- Adds capacity on I-275 with **3 general purpose** lanes and **2 express** lanes in each direction
- Provides direct **express lane** connection to Tampa International Airport
- **Dedicated ramp** from Kennedy Blvd. to Tampa International Airport
- Connects Veterans Expressway to I-275 via SR 60 express lanes
- Provides for **new connections** under I-275 at Reo Street, Occident Street, & Trask Street
- Reo Street connects to southbound I-275



Where Are We In The Process?



We are here



ALL documents remain in DRAFT form and open for public comment until after the Public Hearing in 2019.

SEIS Began
January
2017

Public
Workshop
October
2017

Preparation
of
Documents
Ongoing

Public
Workshop
December
2018

SEIS Public
Hearing
Summer
2019

*A Preferred Alternative will be recommended after the December 2018 Public Workshop.

FDOT is a transit partner.

We're working with local agencies to explore ways to integrate transit into the program.



Bus on Shoulder Pilot Project

- Project will be FDOT-led design/build to widen the shoulders on I-275 in Pinellas County from 5th Ave N (SR-595/Alt-19) to Gandy Blvd
 - \$2.5M has been allocated for the project
- Concept of Operation is under development
 - Will establish the operation protocol for buses
- Design-build ad date: August 27, 2018
- Schedule to be determined



Example of Metro Transit bus on shoulder
Minneapolis, Minnesota



Recent Outreach

August 22 – Northern US 19
Business Owners Roundtable
Discussion

September 10 – Harris
Neighborhood Association

Upcoming Outreach

September 17 – Howard Frankland
Bridge Industry Forum

October 18 (tentative) – Pinellas
Community Working Group

SEIS Public Workshop

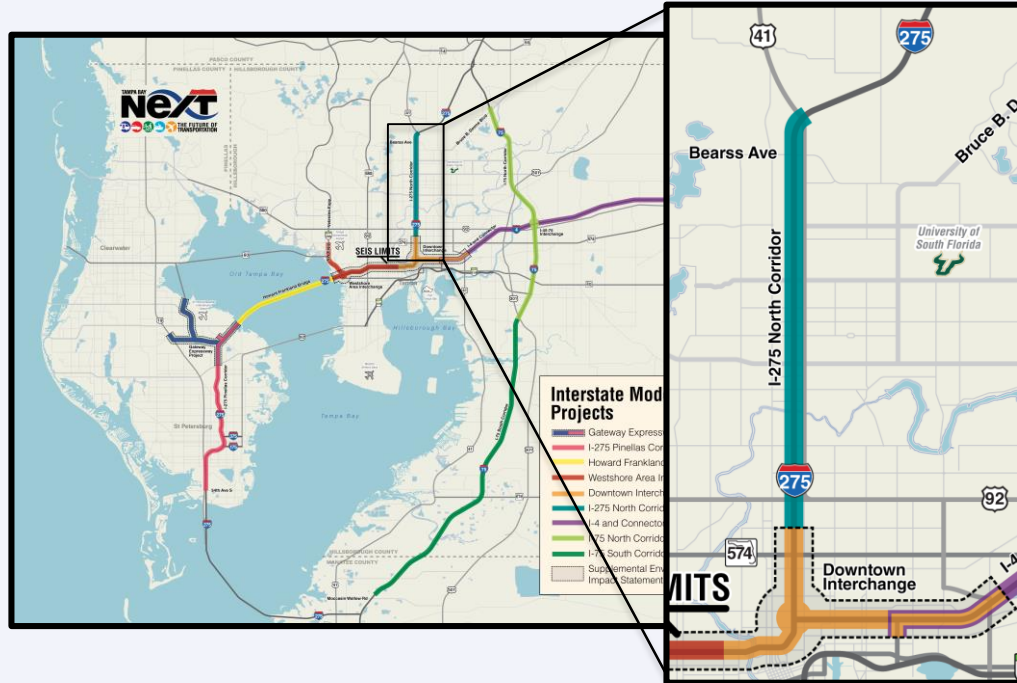
December 10 – SEIS 2nd Public
Workshop #1

December 13 – SEIS 2nd Public
Workshop #2

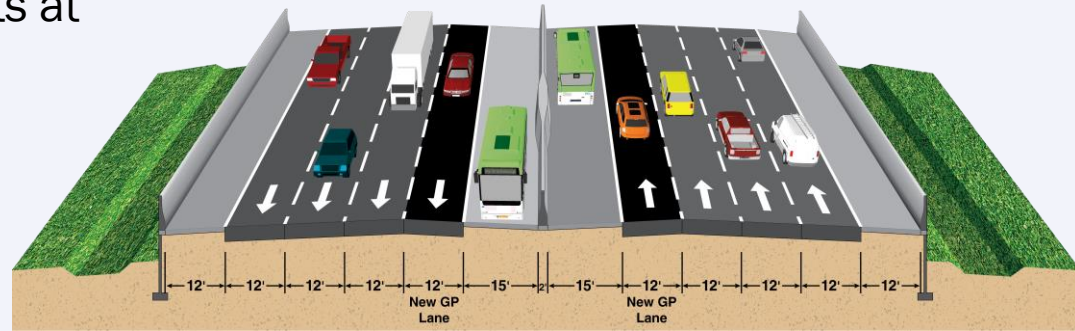


Questions/Discussion

I-275 North Corridor – Under PD&E Study



- Near term improvements within the existing Right of Way
- Wide shoulder for transit*
- Interchange improvements along corridor
- Bike/Ped safety enhancements at interchanges
- Aesthetics and noise walls



*Pending TBARTA Study

US 19 Public Workshop

