



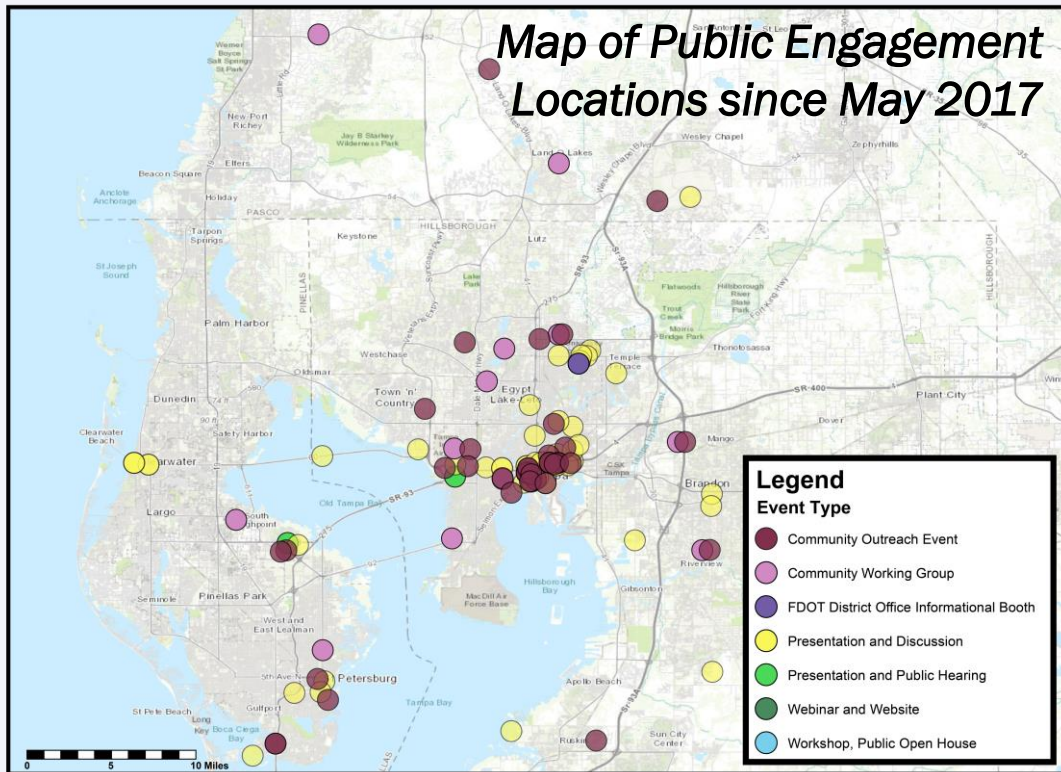
# Tampa Bay Next Update

**Ed McKinney**

**FDOT D7 Planning and Environmental Administrator**



**We've been doing  
a lot of public  
involvement**



## Public Involvement



# What We've Heard

*"I want better transit."*

*"Improve traffic signals and timing."*

*"I'm sick of daily traffic backups. Fix the bottlenecks."*

*"I want to get around without a car. We need more choices."*

*"Too many transportation meetings."*

*"Stop cutting bus service."*

*"Preserve historic neighborhoods."*

*"Cut-through traffic is a problem in my neighborhood."*

*"I'm confused by the alphabet soup. How do all these studies fit together?"*

*"I don't feel safe biking or walking."*

## Tampa Bay Next is more than just interstates.

Representative public comments since May 2017

# Our solutions are more than just interstates.

## Interstate Modernization



## Transit



## Bike/Ped Facilities



## Complete Streets



## Transportation Innovation



## Freight Mobility



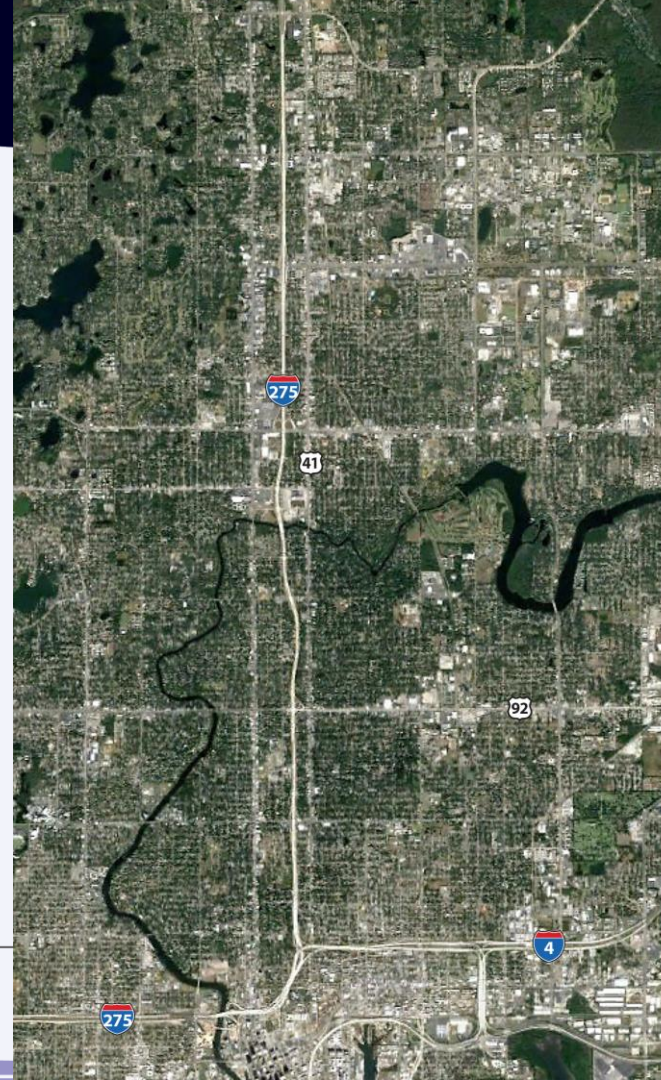
## Active/Ongoing Studies





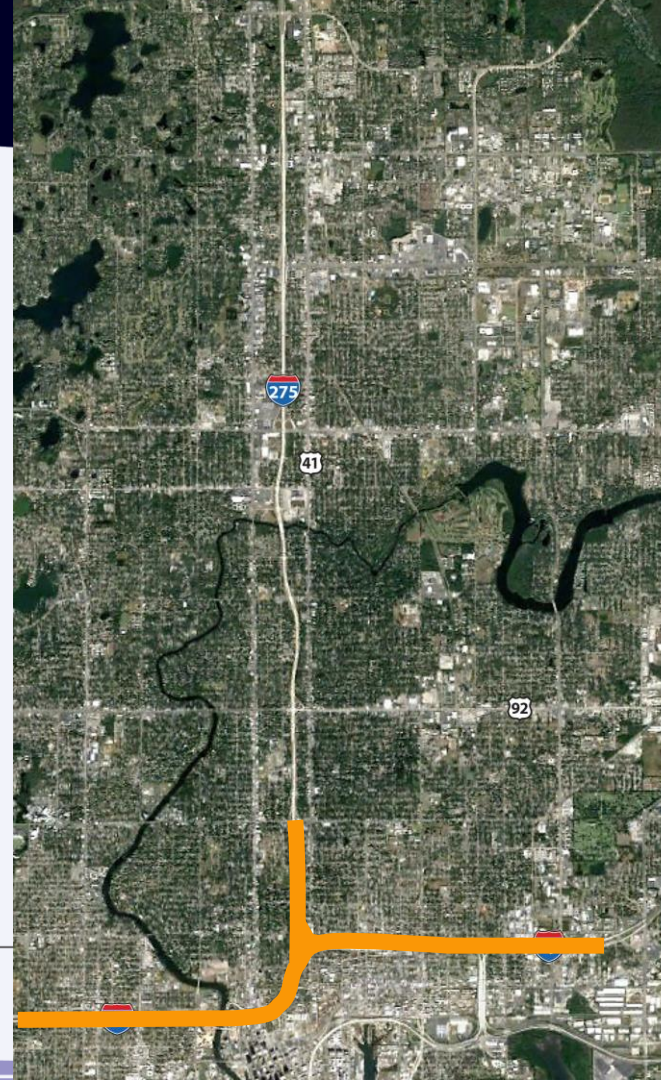
# A New Approach to Transportation Studies:

How can we work together  
and think differently about  
transportation solutions?



# A New Approach

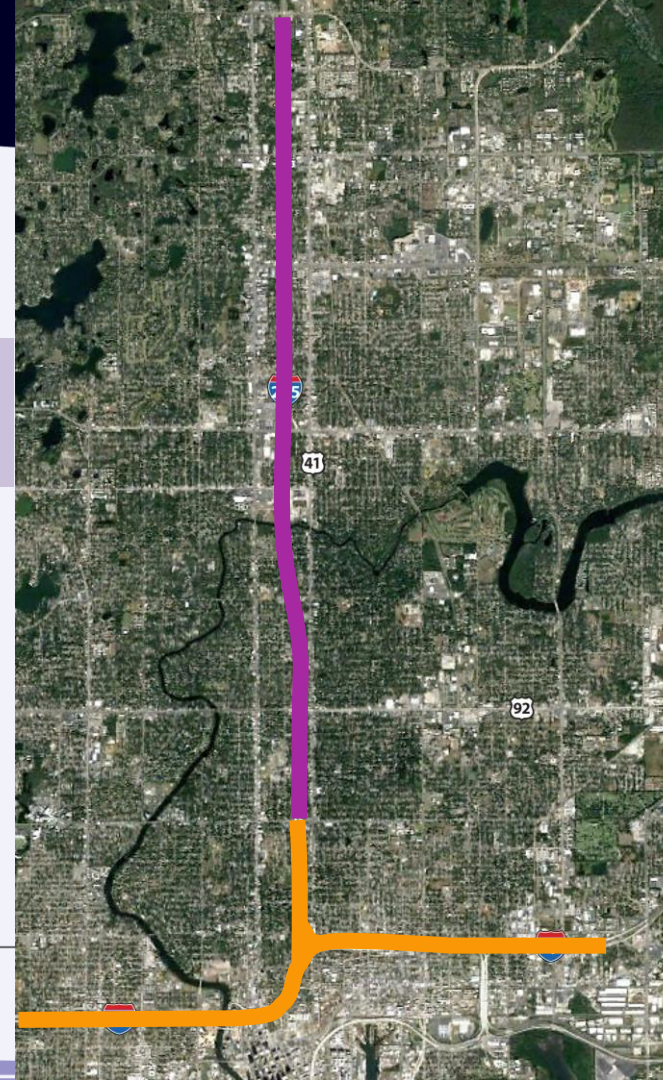
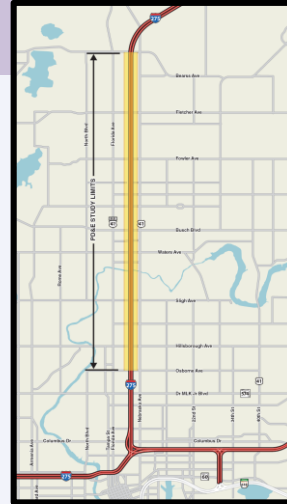
- Tampa Interstate Study SEIS (Westshore to Downtown)





# A New Approach

- Tampa Interstate Study SEIS (Westshore to Downtown)
- I-275 North Project Development & Environment Study





# A New Approach

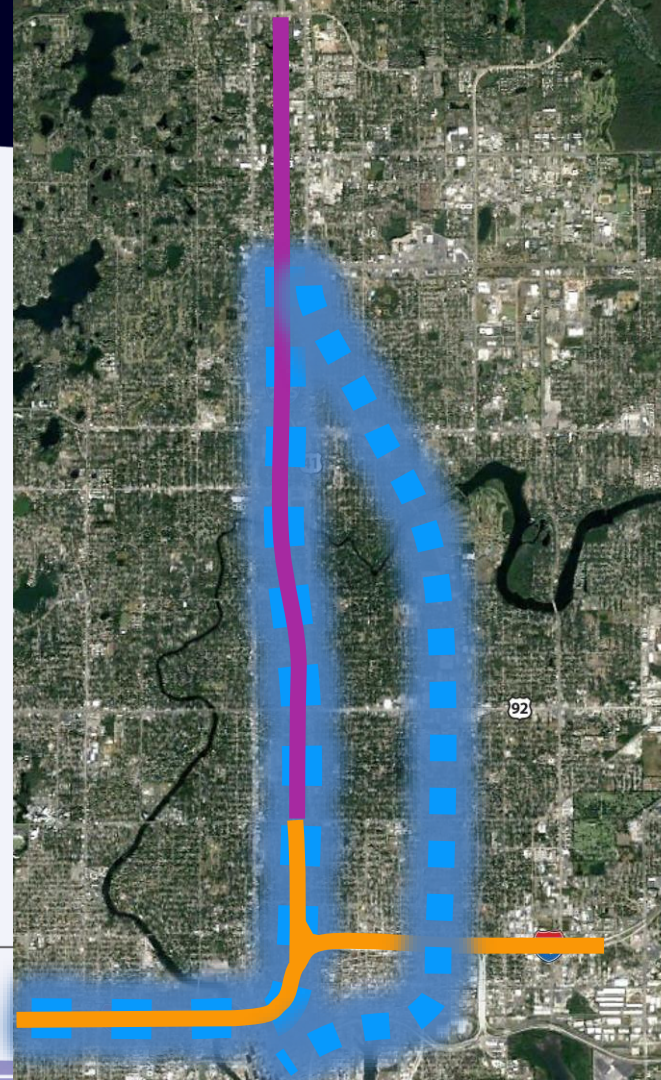
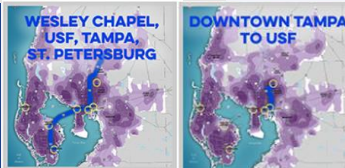
- Tampa Interstate Study SEIS (Westshore to Downtown)
- I-275 North Project Development & Environment Study
- Regional Transit Plan Vision Plan & Catalyst Projects



**STEEL WHEEL:**  
LIGHT RAIL

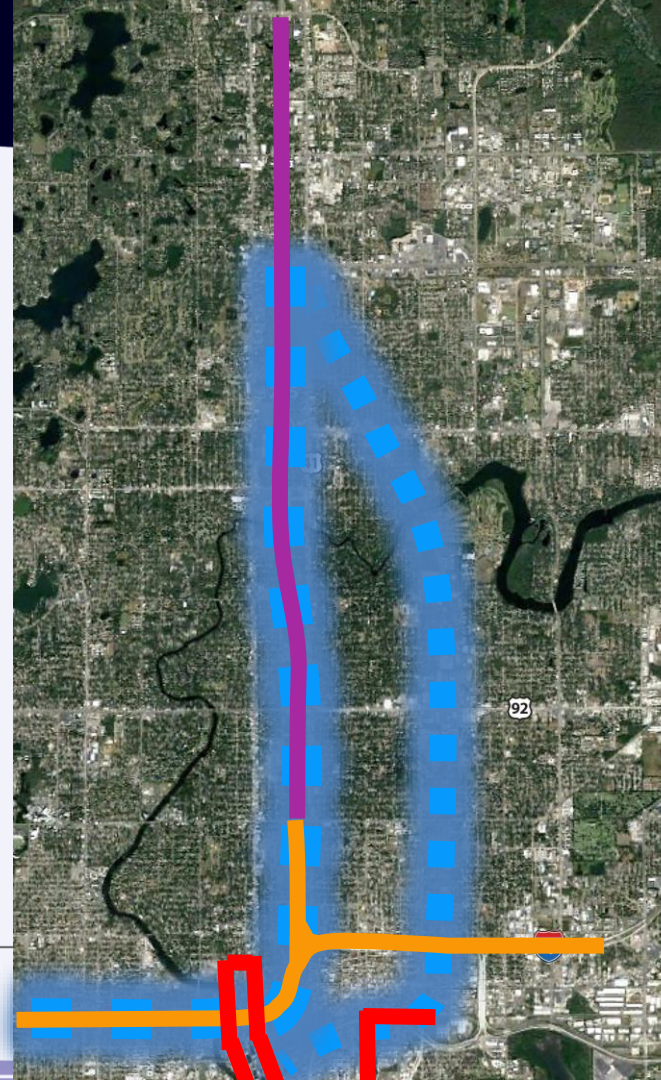


**RUBBER TIRE:**  
IN DEDICATED LANE



# A New Approach

- Tampa Interstate Study SEIS (Westshore to Downtown)
- I-275 North Project Development & Environment Study
- Regional Transit Plan
- Tampa Streetcar Extension Study (Alternatives A & B)

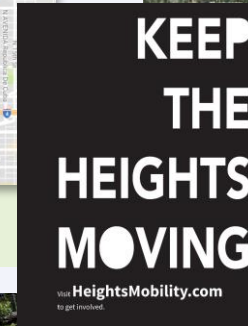
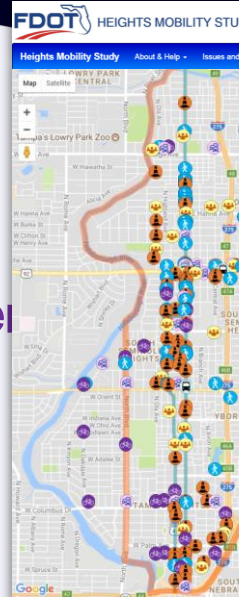




# A New Approach

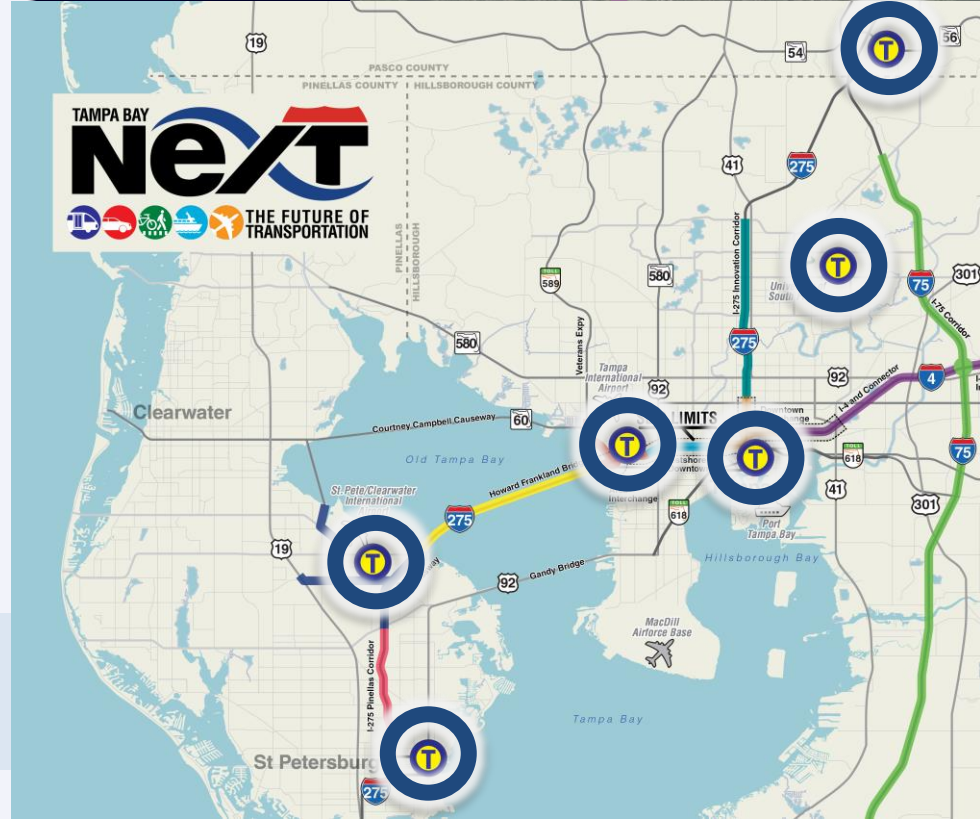
- **Tampa Interstate Study SEIS (Westshore to Downtown)**
- **I-275 North Project Development Environment Study**
- **Regional Transit Plan**
- **Tampa Streetcar Extension Study (Alternatives A & B)**
- **Heights Mobility Plan**

'Florida Ave is a **main street**, It should be optimized for **local transportation** modes'.  
'There is **too much cut-thru** Traffic. These **cars** **should be on I-275** but its backed up daily!' **'Traffic calming, Walk/bike safety & TRANSIT!'**



# A New Approach

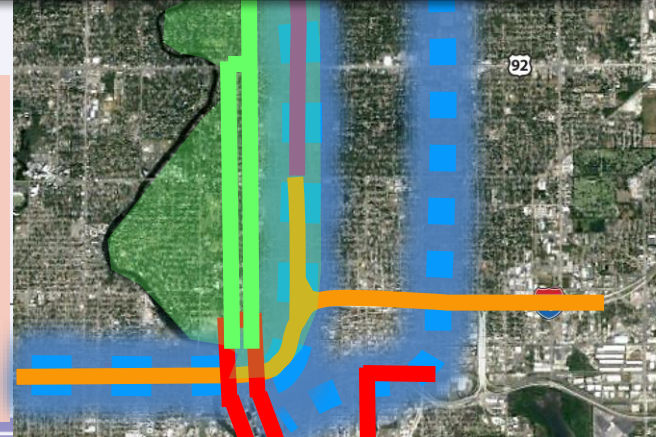
- **Tampa Interstate Study SEIS (Westshore to Downtown)**
- **I-275 North Project Development & Environment Study**
- **Regional Transit Plan**
- **Tampa Streetcar Extension Study (Alternatives A & B)**
- **Heights Mobility Plan**
- **Multimodal Center Studies**





# A New Approach

- Tampa Interstate Study SEIS (Westshore to Downtown)
- I-275 North Project Development & Environment Study
- Regional Transit Plan
- Tampa Streetcar Extension Study
- Heights Mobility Plan
- University Area Multimodal Feasibility Study
- BRT Corridor Analysis – Florida Ave & Fowler Ave
  - Builds off Heights Study & University Study
  - Optimize service network to provide true BRT
  - Service plan & stations on surface streets
  - Covers Project Development & Engineering



## FDOT Invests in Transit in 3 Ways:

### 1. Funding for Studies & Research



### 2. Formula-based Grants (Ongoing)



### 3. Competitive Grants (Project-based)

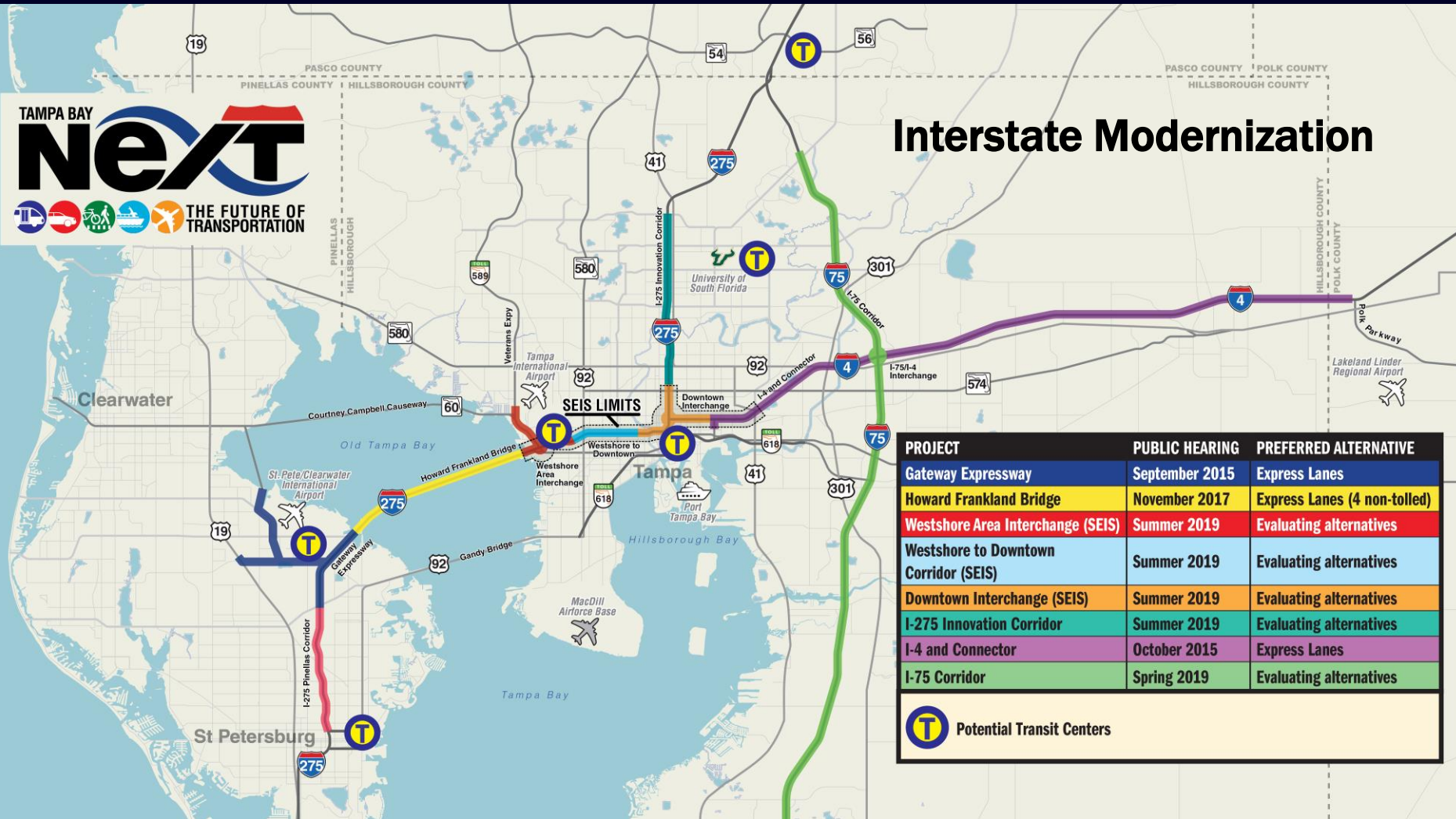






THE FUTURE OF  
TRANSPORTATION

# Interstate Modernization



PROJECT	PUBLIC HEARING	PREFERRED ALTERNATIVE
Gateway Expressway	September 2015	Express Lanes
Howard Frankland Bridge	November 2017	Express Lanes (4 non-tolled)
Westshore Area Interchange (SEIS)	Summer 2019	Evaluating alternatives
Westshore to Downtown Corridor (SEIS)	Summer 2019	Evaluating alternatives
Downtown Interchange (SEIS)	Summer 2019	Evaluating alternatives
I-275 Innovation Corridor	Summer 2019	Evaluating alternatives
I-4 and Connector	October 2015	Express Lanes
I-75 Corridor	Spring 2019	Evaluating alternatives

# Update on FDOT owned Historic Properties

- Conducted safety and security checks in neighborhoods around FDOT owned properties
- Working with each neighborhood to develop a plan for historic properties
- Developing new downtown interchange options to eliminate/minimize future right of way expansion in historic areas





# West Tampa Outreach



# Upcoming Events

- Downtown/Urban Core Community Working Group – Late February/Early March\*
- Heights Mobility Study Workshop – Late March/Early April\*





# Questions/Discussion

