



Tampa Bay Next Update

David Gwynn, P.E.

FDOT District Seven Secretary

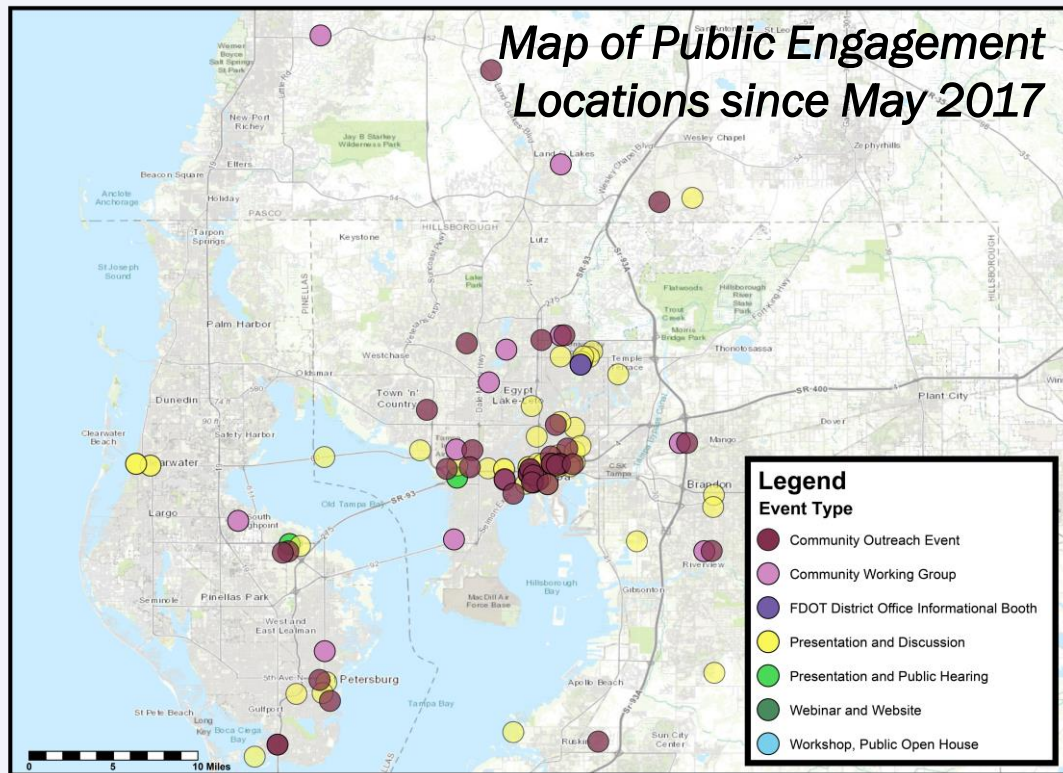
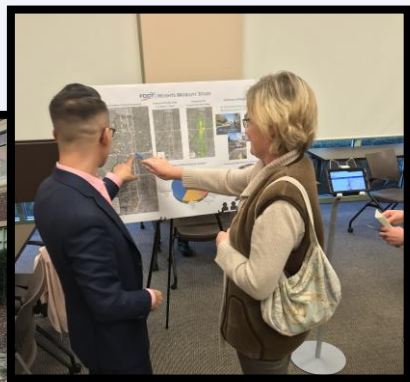


Overview

- Public Engagement - What we've learned
- New Approach - What we are doing about it
- Transit Programs
- Interstate Update



We've been doing
a lot of public
involvement



Public Involvement



What We've Heard

"I want better transit."

"Improve traffic signals and timing."

"I'm sick of daily traffic backups. Fix the bottlenecks."

"I want to get around without a car. We need more choices."

"Too many transportation meetings."

"Stop cutting bus service."

"Preserve historic neighborhoods."

"Cut-through traffic is a problem in my neighborhood."

"I'm confused by the alphabet soup. How do all these studies fit together?"

"I don't feel safe biking or walking."

Tampa Bay Next is more than just interstates.

Representative public comments since May 2017

Our solutions are more than just interstates.

Interstate Modernization



Transit



Bike/Ped Facilities



Complete Streets



Transportation Innovation



Freight Mobility

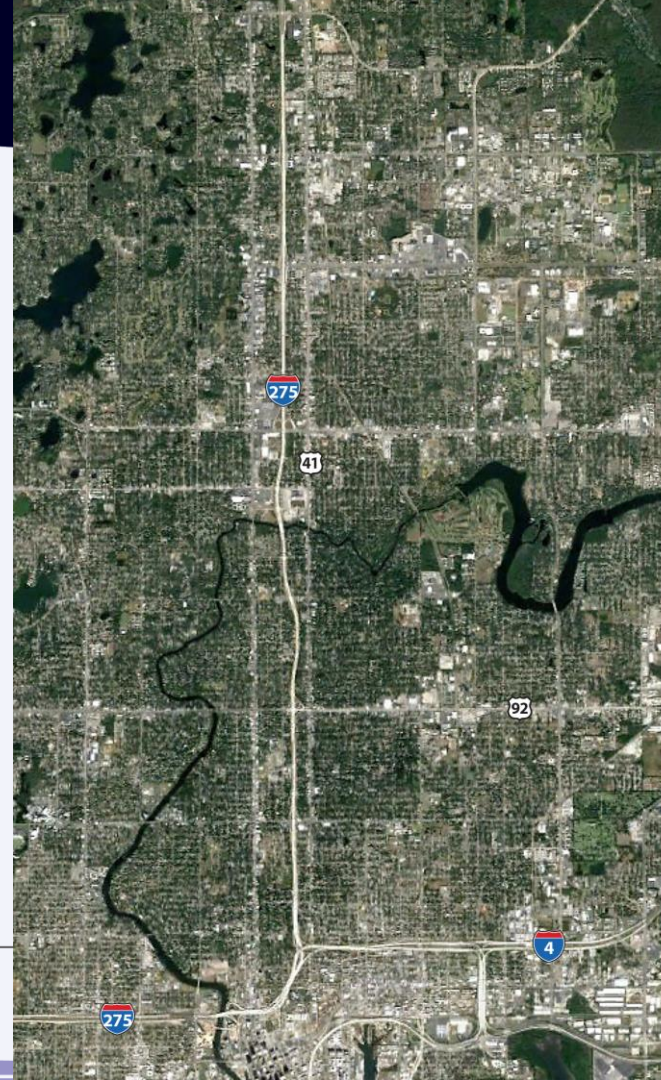


Active/Ongoing Studies



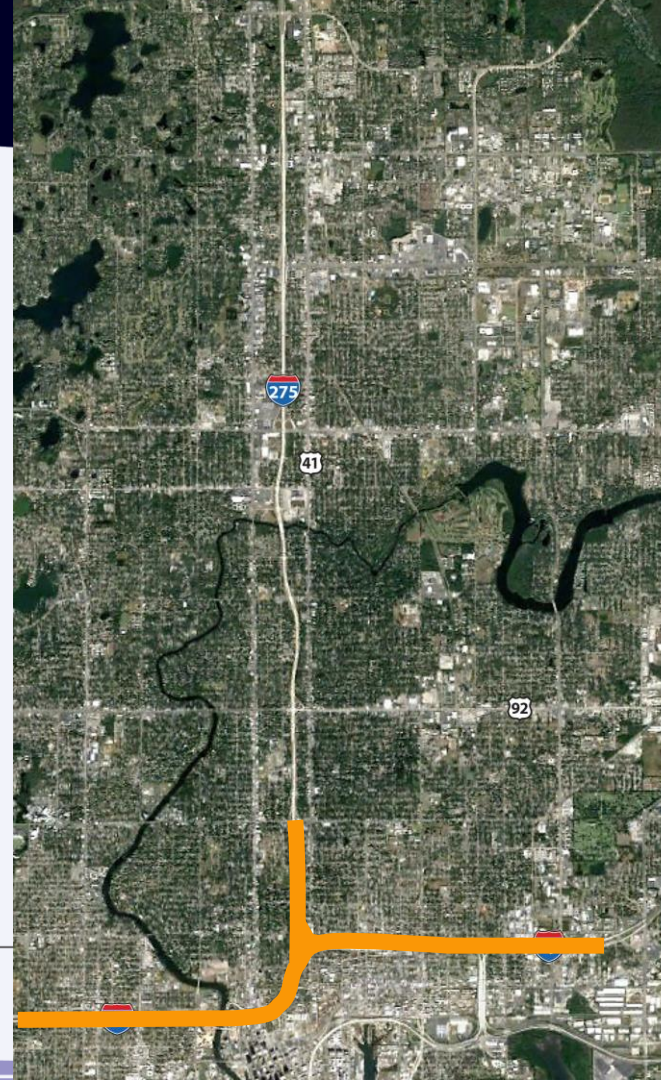
A New Approach to Transportation Studies:

How can we work together
and think differently about
transportation solutions?



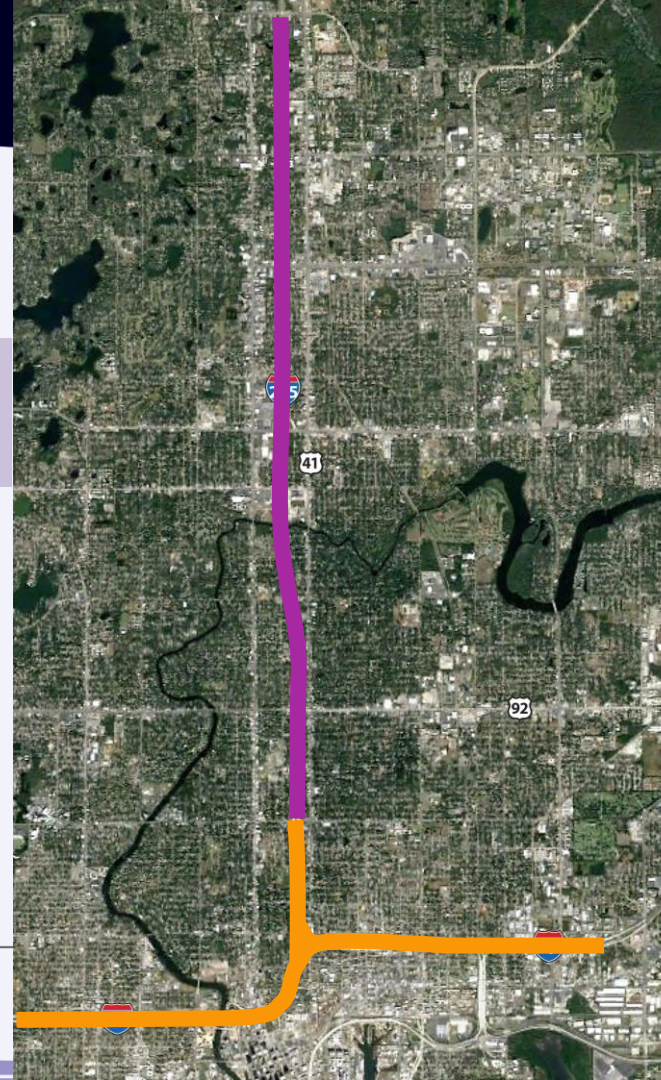
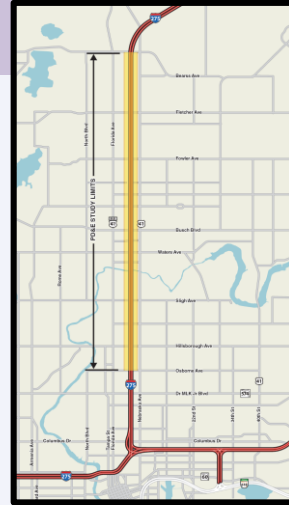
A New Approach

- Tampa Interstate Study SEIS (Westshore to Downtown)



A New Approach

- Tampa Interstate Study SEIS (Westshore to Downtown)
- I-275 North Project Development & Environment Study



A New Approach

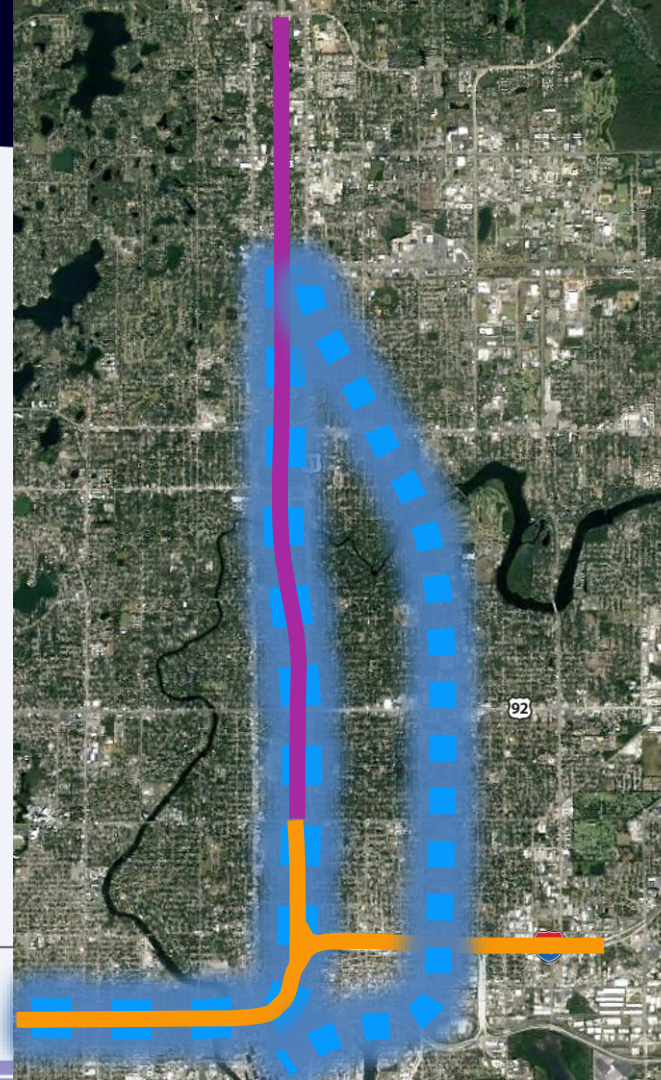
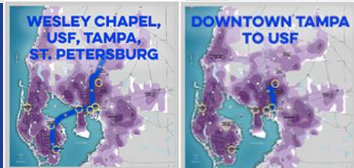
- Tampa Interstate Study SEIS (Westshore to Downtown)
- I-275 North Project Development & Environment Study
- Regional Transit Plan Vision Plan & Catalyst Projects



STEEL WHEEL:
LIGHT RAIL

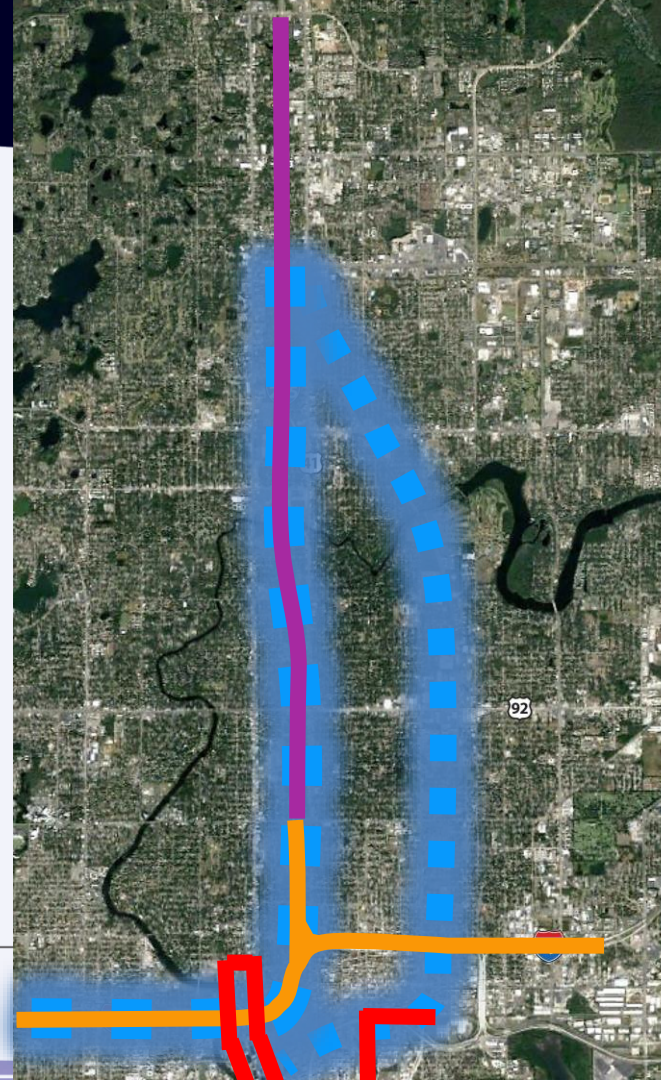


RUBBER TIRE:
IN DEDICATED
LANE



A New Approach

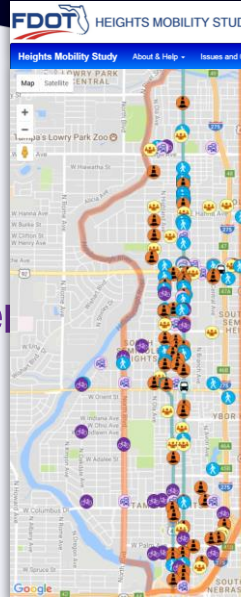
- Tampa Interstate Study SEIS (Westshore to Downtown)
- I-275 North Project Development & Environment Study
- Regional Transit Plan
- Tampa Streetcar Extension Study (Alternatives A & B)



A New Approach

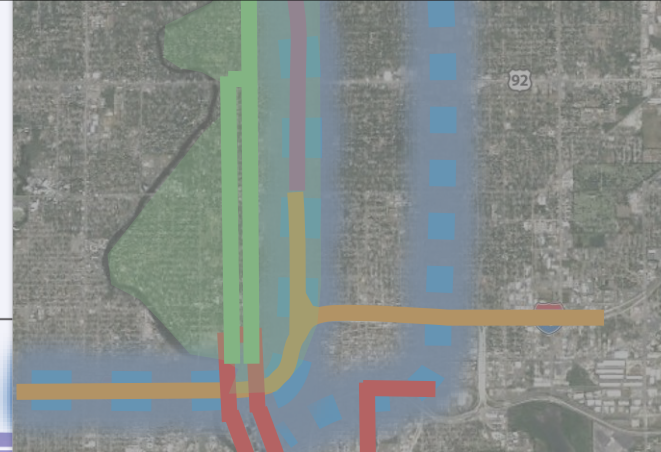
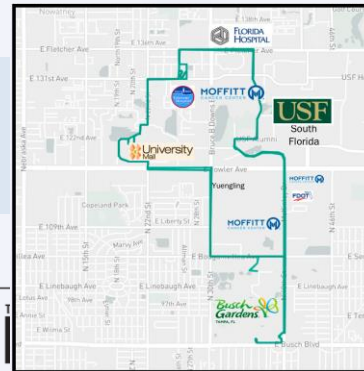
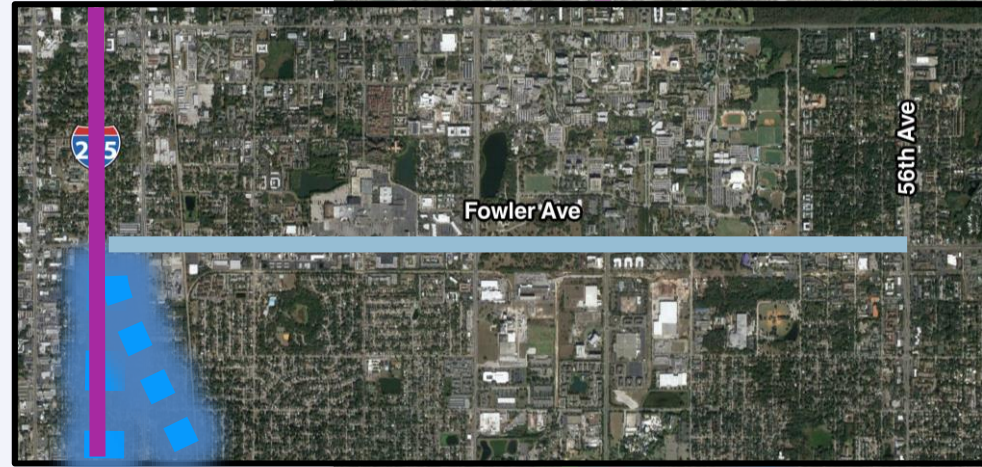
- Tampa Interstate Study SEIS (Westshore to Downtown)
- I-275 North Project Development Environment Study
- Regional Transit Plan
- Tampa Streetcar Extension Study (Alternatives A & B)
- Heights Mobility Plan

'Florida Ave is a **main street**, It should be optimized for local transportation modes'.
'There is too much cut-thru Traffic. These cars should be on I-275 but its backed up daily!'
'Traffic calming, Walk/bike safety & TRANSIT!'



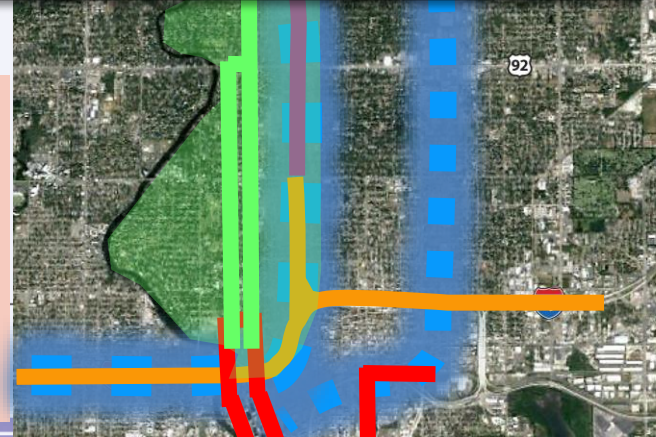
A New Approach

- Tampa Interstate Study SEIS (Westshore to Downtown)
- I-275 North Project Development & Environment Study
- Regional Transit Plan
- Tampa Streetcar Extension Study (Alternatives A & B)
- Heights Mobility Plan
- University Area Multimodal Feasibility Study



A New Approach

- Tampa Interstate Study SEIS (Westshore to Downtown)
- I-275 North Project Development & Environment Study
- Regional Transit Plan
- Tampa Streetcar Extension Study
- Heights Mobility Plan
- University Area Multimodal Feasibility Study
- BRT Corridor Analysis – Florida Ave & Fowler Ave
 - Builds off Heights Study & University Study
 - Optimize service network to provide true BRT
 - Service plan & stations on surface streets
 - Covers Project Development & Engineering



FDOT Invests in Transit in 3 Ways:

1. Funding for Studies & Research



2. Formula-based Grants (Ongoing)



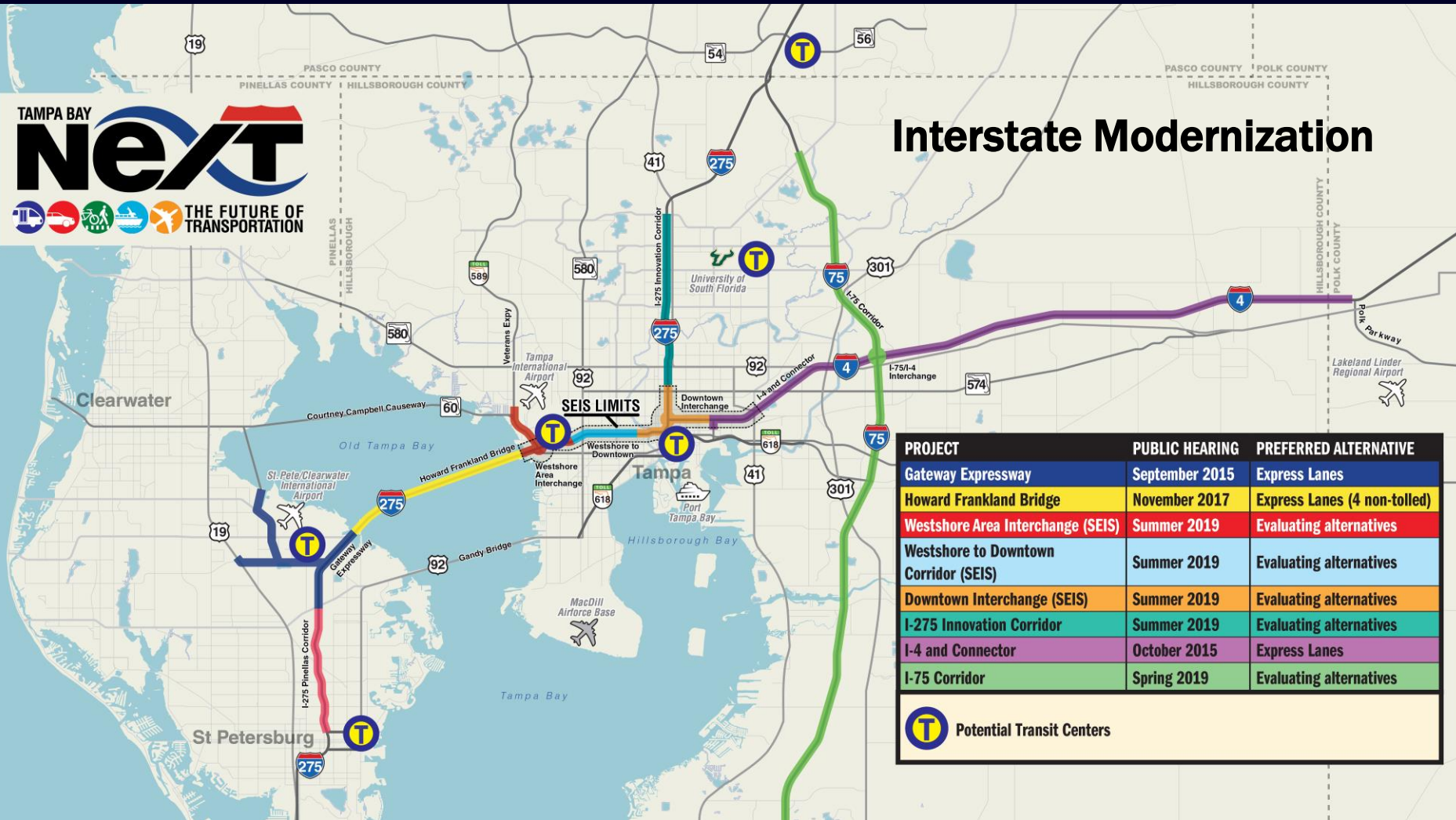
3. Competitive Grants (Project-based)





THE FUTURE OF
TRANSPORTATION

Interstate Modernization



PROJECT	PUBLIC HEARING	PREFERRED ALTERNATIVE
Gateway Expressway	September 2015	Express Lanes
Howard Frankland Bridge	November 2017	Express Lanes (4 non-tolled)
Westshore Area Interchange (SEIS)	Summer 2019	Evaluating alternatives
Westshore to Downtown Corridor (SEIS)	Summer 2019	Evaluating alternatives
Downtown Interchange (SEIS)	Summer 2019	Evaluating alternatives
I-275 Innovation Corridor	Summer 2019	Evaluating alternatives
I-4 and Connector	October 2015	Express Lanes
I-75 Corridor	Spring 2019	Evaluating alternatives

Potential Transit Centers

Update on FDOT owned Historic Properties

- Conducted safety and security checks in neighborhoods around FDOT owned properties
- Working with each neighborhood to develop a plan for historic properties
- Developing new downtown interchange options to eliminate/minimize future right of way expansion in historic areas



Upcoming Events

- Downtown/Urban Core Community Working Group – Late February/Early March*
- Heights Mobility Study Workshop – Late March/Early April*





Questions/Discussion

