



Community Working Group – North and West Hillsborough County

October 26, 2017
Real Time Record



Due to the low attendance of this session, it was decided to skip the formal presentations and have the speakers host a round-table discussion. The following pages contain the slide presentations for each of the speakers.

Table of Contents

Welcome / Objectives / Event Structure	5
FDOT District Seven Presentation.....	9
Hillsborough County Metropolitan Planning Organization Presentation	28
Regional Transit Feasibility Plan Presentation.....	41





Community Working Group – North and West Hillsborough County

October 26, 2017

5:30 p.m. to 7:30 p.m.

Christian Family Center, 3457 W. Kenyon Avenue, Tampa FL

5:30 p.m. – 5:40 p.m.	<p><u>Welcome / Objectives / Event Structure</u></p> <p>Tina Fischer, Collaborative Labs</p>
5:40 p.m. – 6:00 p.m.	<p><u>FDOT District Seven Presentation</u></p> <p>Bill Jones and Ed McKinney</p>
6:00 p.m. – 6:20 p.m.	<p><u>Hillsborough County Metropolitan Planning Organization Presentation</u></p> <p>Rich Clarendon</p>
6:20 p.m. – 6:40 p.m.	<p><u>Regional Transit Feasibility Plan Presentation</u></p> <p>Scott Pringle</p>
6:40 p.m. – 7:30 p.m.	<p><u>Roundtable Discussions</u></p> <ul style="list-style-type: none"> - Florida Department of Transportation/District Seven - Hillsborough County Metropolitan Planning Organization - Regional Transit Feasibility Plan
7:30 p.m.	<p><u>Closing</u></p>

Welcome / Objectives / Event Structure

Tina Fischer, Collaborative Labs

Welcome

North and West Hillsborough Community Working Group
October 26, 2017

Tina Fischer
Collaborative Labs
St. Petersburg College



Welcome to those viewing by webinar

LISTENING OPTIONS

- Your listening options are provided in the “Audio” pane of your Control Panel.
- Telephone (Phone number, access code, and audio pin provided under “Audio”)
- Computer or VoIP (Must have speakers)
- You will join the webinar in listen-only mode for the duration of the session



For those attending in-person

- Please be considerate of web-viewers by limiting outside conversations and shuffling paper during the webinar.
- Place cell phones in quiet mode and leave the room to take calls.



Our agenda this evening

- Tonight will include presentations about ongoing and upcoming activities from the Florida Department of Transportation (FDOT) District Seven, the Hillsborough County Metropolitan Planning Organization and an update on the Regional Transit Feasibility Plan.
- The first half of the meeting will be presentations that can be viewed online or in-person.
- The second half of the meeting will be breakout sessions with FDOT, Hillsborough County Metropolitan Planning Organization, HART and the Regional Transit Feasibility Plan for those who are attending in-person.



Questions Will Be Addressed During and After Breakout Sessions

- We have a lot of information to share with you tonight. In order to get through all the presentations, we will address questions during the breakout sessions.
- FDOT leadership and staff will be available after the breakout sessions if you have additional questions or would like further discussion.



Webinar Questions

- For those viewing online, please utilize the **chat bar** on the right side of your screen to send questions to the Tampa Bay Next team.
- Online questions will be collected and addressed by topic experts.
- Responses will be posted on TampaBayNext.com next week.
- An email notification will be sent to those registered online and those in the TampaBayNext outreach list once questions and responses have been posted.



Real Time Record

- The Real Time Record will include the first half of tonight's agenda. Due to the format of the breakout sessions, all comments and discussions cannot be recorded.
- If you would like to have your comment included in the Real Time Record, please submit a written comment on one of the comment cards provided, submit your comment via TampaBayNext.com, or submit a comment via the webinar tonight.

TampaBayNext.com

(813) 975-NEXT

TampaBayNext@dot.state.fl

f TampaBayNext

@TampaBayNext

.us



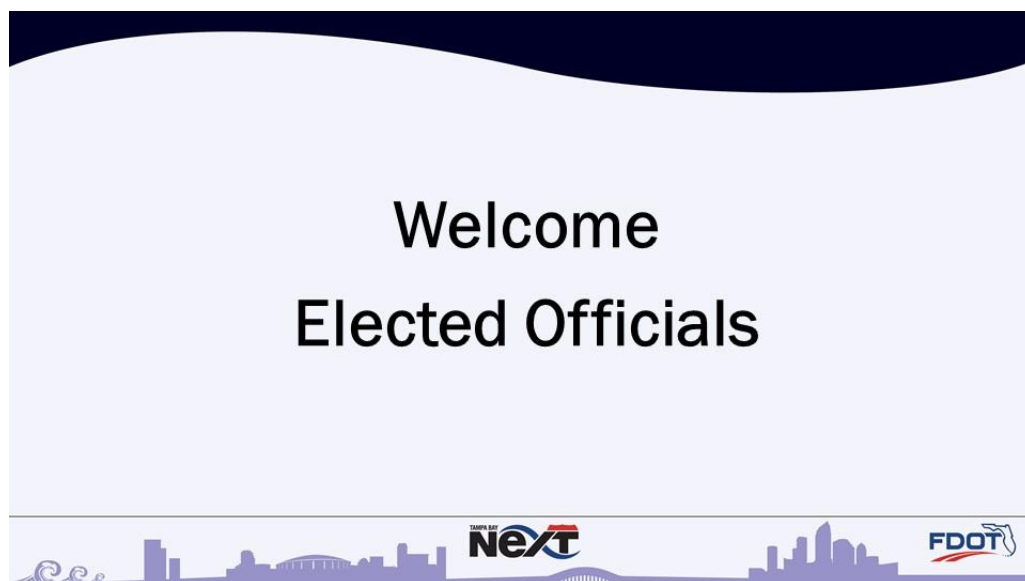
**Your input matters. Your ideas help
shape the Tampa Bay Next program.**

Now on to our presentations



FDOT District Seven Presentation

Bill Jones and Ed McKinney



You Talked. We Listened.

What you said you want to see:	What we're doing about it:
<ul style="list-style-type: none">▶ Hub System for Transit▶ Multimodal Options▶ Technology Solutions▶ Neighborhood Preservation▶ Prioritize Safety▶ Education/Explain Transportation▶ More Online & Recorded Meetings	<ul style="list-style-type: none">▶ Intermodal Center Study▶ Funding Next Phase of Project Development for RTPP▶ Formed Tech Team; Working with City and County to Maximize Existing Pavement▶ Advanced the Heights Study; Created New Downtown Interchange Concepts▶ Complete Streets; Working on Improved Road Geometry; Tech Solutions to Enhance Safety▶ Developed Citizens Transportation Academy▶ Utilizing Webinars and Posting Recordings Online



Modernize infrastructure

Prepare for the future

Embrace collaboration and innovation







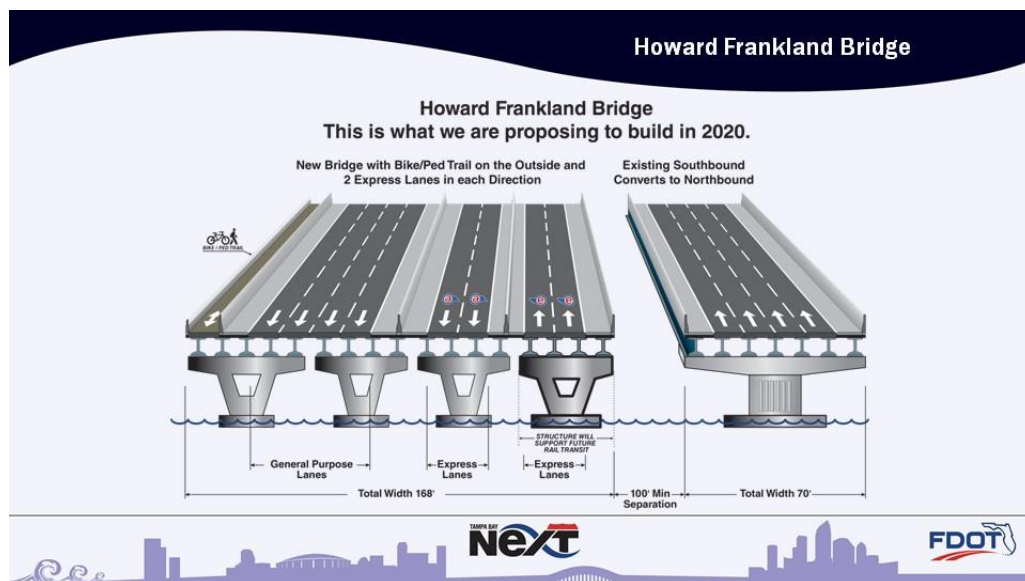
**Tampa Bay Next
is a program and
process of working with
the community to come
up with an action plan
for transportation.**

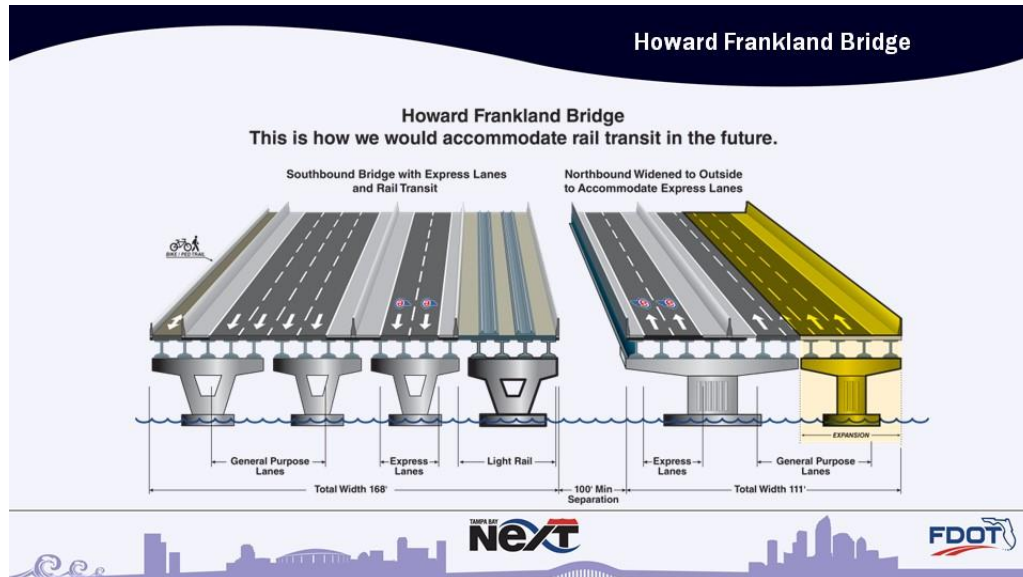


Tonight's Topics

- Howard Frankland Bridge Project
- Operational Improvements to I-275
- Operational Improvements to SR 60/Veterans Expressway
- Fowler Corridor and USF Intermodal Center Studies
- SEIS Update
- I-275 North to USF Area





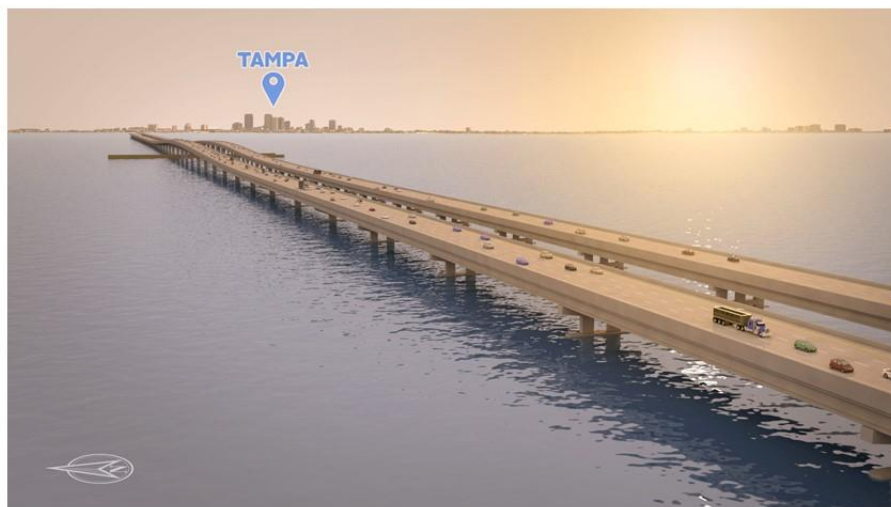
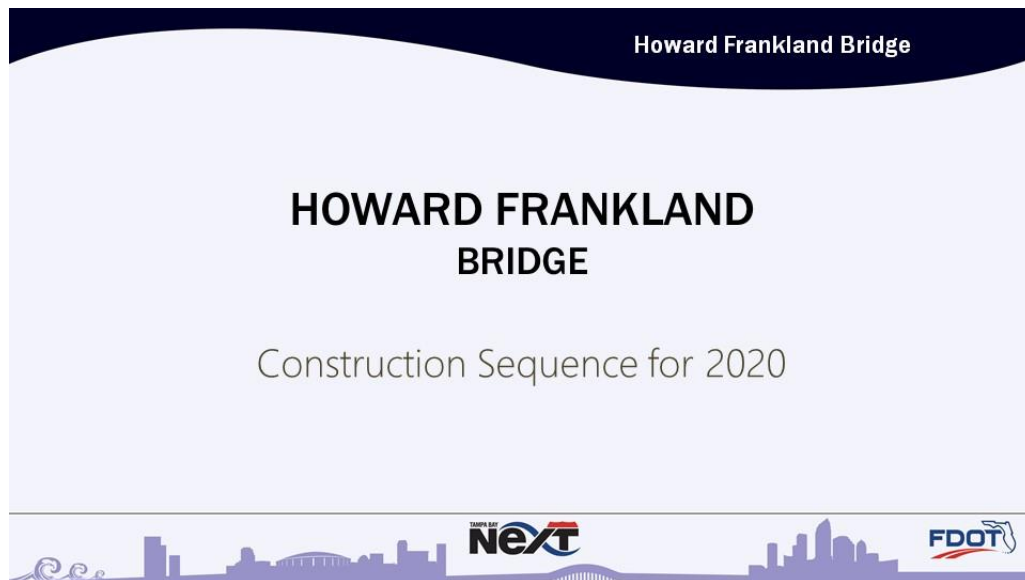


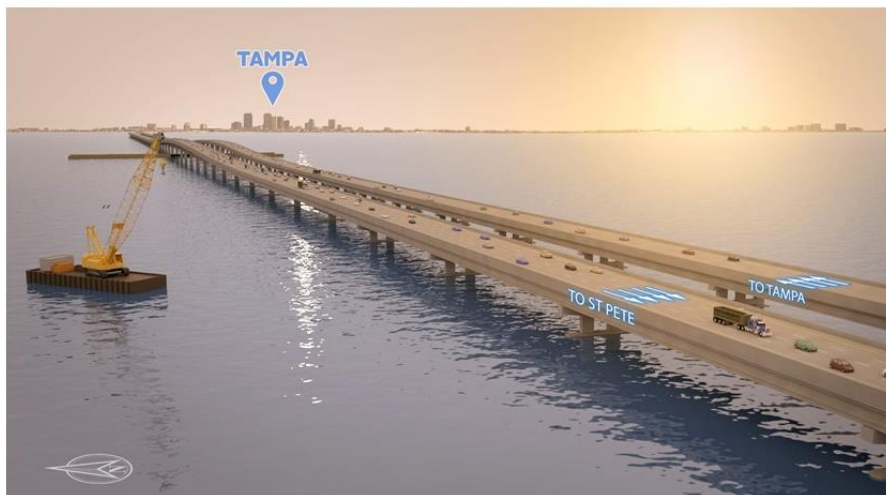
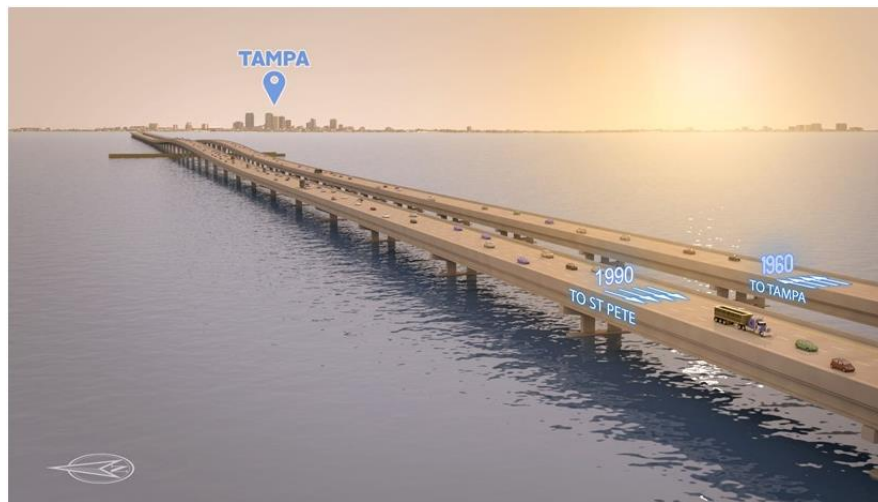
Howard Frankland Bridge

New Design Benefits

- ▶ Improves **incident management** and **hurricane evacuation**
- ▶ Improves operations of **Express Bus Service** and accommodates **future transit**
- ▶ Includes **bicycle/pedestrian trail**
- ▶ **Eliminates the need** for a third bridge
- ▶ Accommodates **future demand**
- ▶ Prepares bridge for **autonomous vehicles**

Tampa Bay **Next** FDOT













I-275 OPERATIONAL IMPROVEMENTS



From North of the Howard Frankland Bridge to West of Lois Avenue

I-275 Operational Improvement

I-275 Operational Improvements

- FPID: 441111-1
- Construction Estimate: \$25M
- Design/Build Notice To Proceed: 2019
- No ROW required
- To be completed prior to Howard Frankland Bridge project
- Description: Adds one additional general purpose lane to I-275 northbound and southbound to alleviate congestion entering and exiting Howard Frankland Bridge



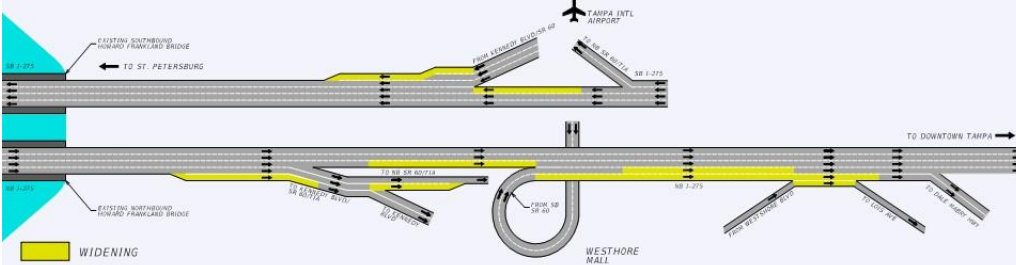





Westshore Area Lane Additions and Transitions

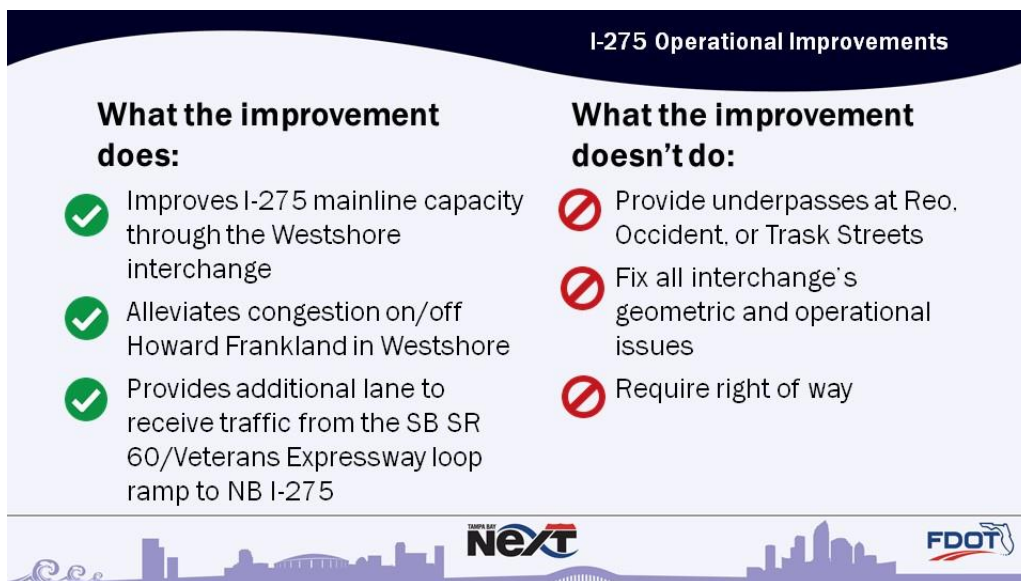
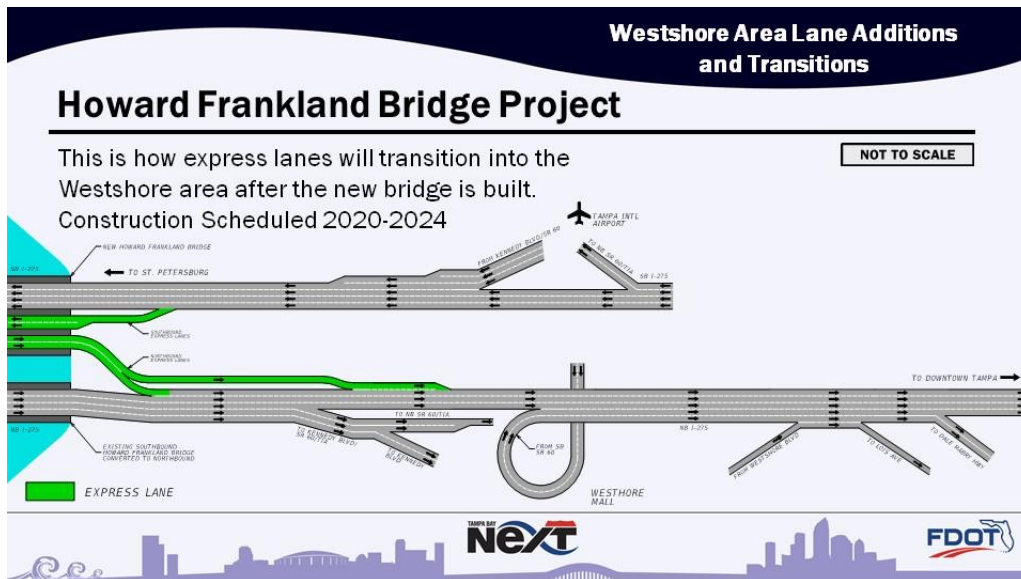
I-275 Operational Improvements

This is our upcoming project to reduce congestion on I-275 at SR 60. Construction Scheduled 2019-2020

NOT TO SCALE







Project Overview

- FPID: TBD
- Construction Estimate: \$2.9M
- Design/Build NTP: 2018
- No ROW required
- Description: Improves transition from Veteran's Expressway to SR 60 and Tampa Airport Interchange

**Southbound SR 60/Veterans Expressway
Operational Improvements**







Fowler Corridor and USF Intermodal Center Studies

Tampa Innovation District
TRANSIT CIRCULATOR

June 30, 2016

Hillsborough MPO
Metropolitan Planning
for Transportation

FDOT

FDOT is kicking off two new studies in the USF area.

- Fowler Ave. Corridor Study
- USF Intermodal Center Study
- Public outreach will begin soon
- Studies will last 12-18 months





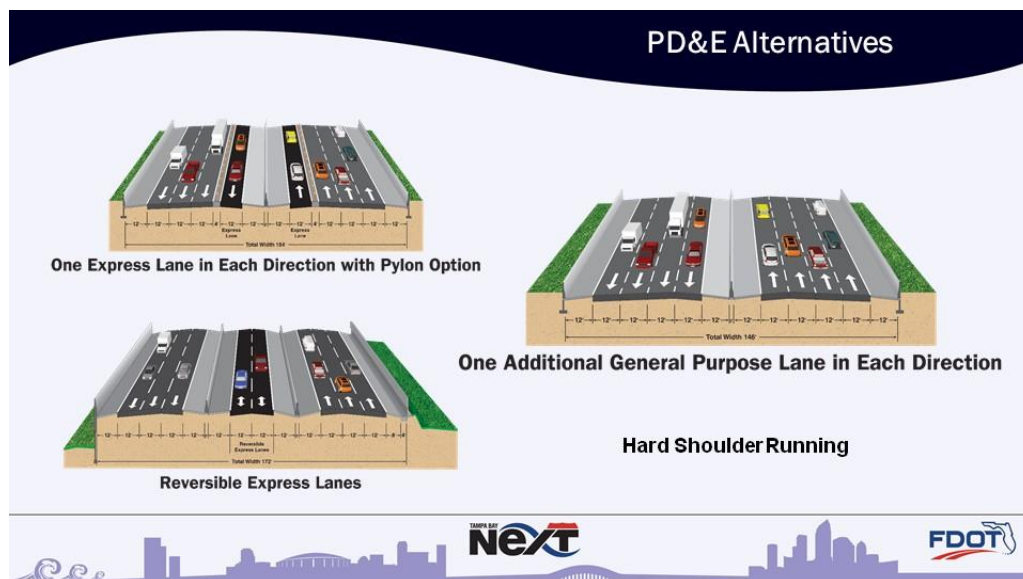
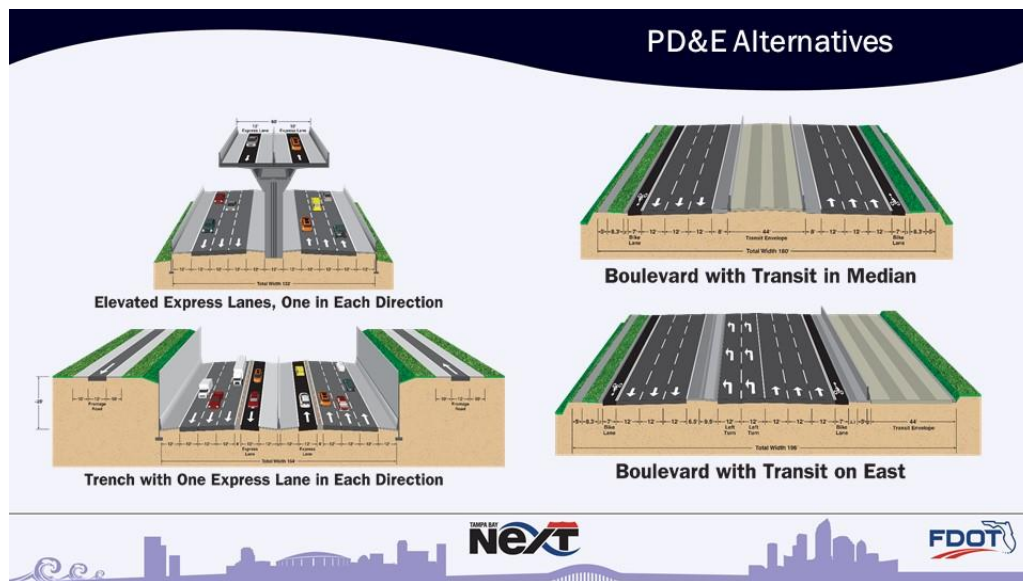
The map shows a section of I-275 in Tampa, Florida, highlighted in yellow. The route is labeled 'I-275 NORTH PD&E STUDY' with arrows indicating the study area from north of MLK Blvd to north of Bearss Ave. The map includes street names and landmarks.

I-275 North PD&E Study

I-275 North from north of MLK Blvd to north of Bearss Ave.

- Separate study, but connected to options for the Downtown Interchange (Type 2 CE)
- Outreach activities – Late Fall (dates TBD)
- Working with Hillsborough MPO, City of Tampa, and Hillsborough County

The slide also features the 'TAMPA BAY Next' logo and the FDOT logo at the bottom, along with a purple silhouette of a city skyline.





TAMPA BAY
Next
THE FUTURE OF
TRANSPORTATION

**Moving Forward
Together**



Hillsborough MPO
Metropolitan Planning
for Transportation



PASCO COUNTY
MPO
FLORIDA



TBARTA
Tampa Bay Area Regional Transit Authority



**FORWARD
PINELLAS**




Next Steps


Date	Time	Event Name	Location
Thursday, October 5	5:30 p.m. – 7:30 p.m.	Westshore/West Tampa/South Tampa Community Working Group - Meeting #2	Centre Club, 8th Floor 123 S. Westshore Blvd., Tampa, FL 33609
Friday, October 6	12:00 p.m.	Citizens Transportation Academy Metropolitan Planning Process	Online Webinar (or attend at FDOT) 11201 McKinley Drive, Tampa, FL 33612
Monday, October 9	4:00 p.m. – 7:00 p.m.	Tampa Interstate Study, SEIS Public Workshop - Westshore	Marriott Westshore 1001 N. Westshore Blvd., Tampa, FL 33607
Tuesday, October 10	4:00 p.m. – 7:00 p.m.	Tampa Interstate Study, SEIS Public Workshop - Downtown Tampa	Hilton Downtown Tampa 211 N. Tampa Street, Tampa, FL 33602
Friday, October 13	12:00 p.m.	Citizens Transportation Academy Introduction to Transportation Project Development	Online Webinar (or attend at FDOT) 11201 McKinley Drive, Tampa, FL 33612
Friday, October 20	12:00 p.m.	Citizen Transportation Academy Introduction to Transit: Transit Modes and How They Work	Online Webinar (or attend at FDOT) 11201 McKinley Drive, Tampa, FL 33612
Friday, October 27	12:00 p.m.	Citizen Transportation Academy How Transportation Projects are Funded	Online Webinar (or attend at FDOT) 11201 McKinley Drive, Tampa, FL 33612
Thursday, November 2	12:00 p.m.	Citizen Transportation Academy Congestion Management Strategies	Online Webinar (or attend at FDOT) 11201 McKinley Drive, Tampa, FL 33612
Tuesday, November 14	5:30 p.m. – 7:30 p.m.	Howard Frankland Bridge Public Hearing	Tampa Marriott Westshore 1001 N. Westshore Blvd., Tampa, FL 33607
Thursday, November 16	5:30 p.m. – 7:30 p.m.	Howard Frankland Bridge Public Hearing	Hilton-St. Pete Carillon Park 950 Lake Carillon Dr., St. Petersburg, FL 33716



**CITIZENS
TRANSPORTATION
ACADEMY**

WEBINAR COURSES

September 22	Regional Transportation Roles and Responsibilities
<i>Note: There will be no session on Sept. 29 due to the TMA Leadership Meeting</i>	
October 6	Metropolitan Planning Process
October 13	Introduction to Transportation Project Development
October 20	Introduction to Transit: Transit Modes and How They Work
October 27	How Transportation Projects are Funded
November 2	Congestion Management Strategies




Hillsborough County Metropolitan Planning Organization Presentation

Rich Clarendon

Instructions for PollEverywhere

Before the presentation, log in:

www.poll Everywhere.com

User Name: fuentesl@plancom.org

P/W: Happy001

When you get to the question slides, click on the link.

When the page opens, click the “make poll active” button (2nd button from the top) and then the full-screen button.

When done with the question, click the lock button. Click the arrow button to move to the next question, or go to the next slide and click the link there.

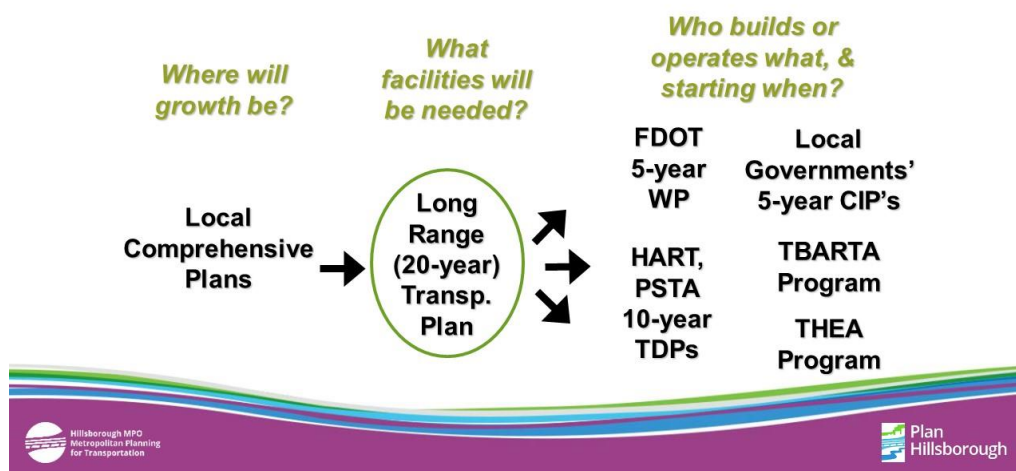


Why does the Long Range Plan Matter?

- Identifies priority projects now being funded, for example:
 - Howard Frankland Bridge
 - I-275/SR 60 Interchange
 - Replacement Buses
 - Advanced Traffic Management Systems
 - South Coast Greenway & other trails
- Conveys our priorities for federal & state funding to Washington, DC & Tallahassee

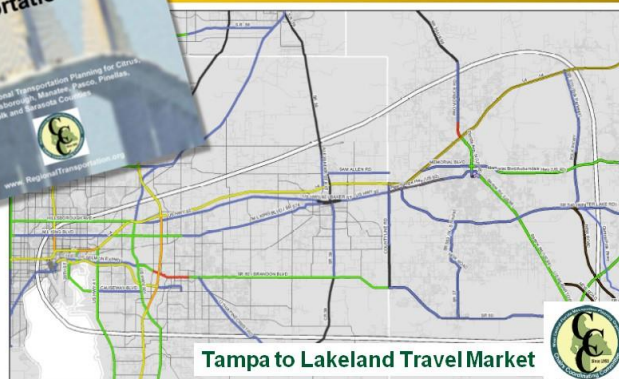


How does it fit with other efforts?





How is it coordinated across the region?

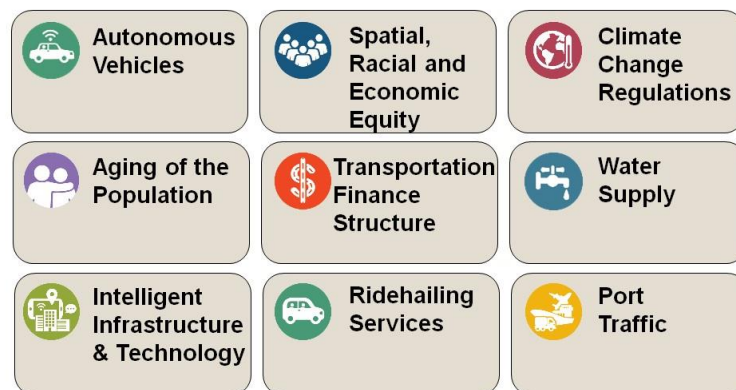


Regional Travel Needs

Studied by MPO Chairs Coordinating Committee

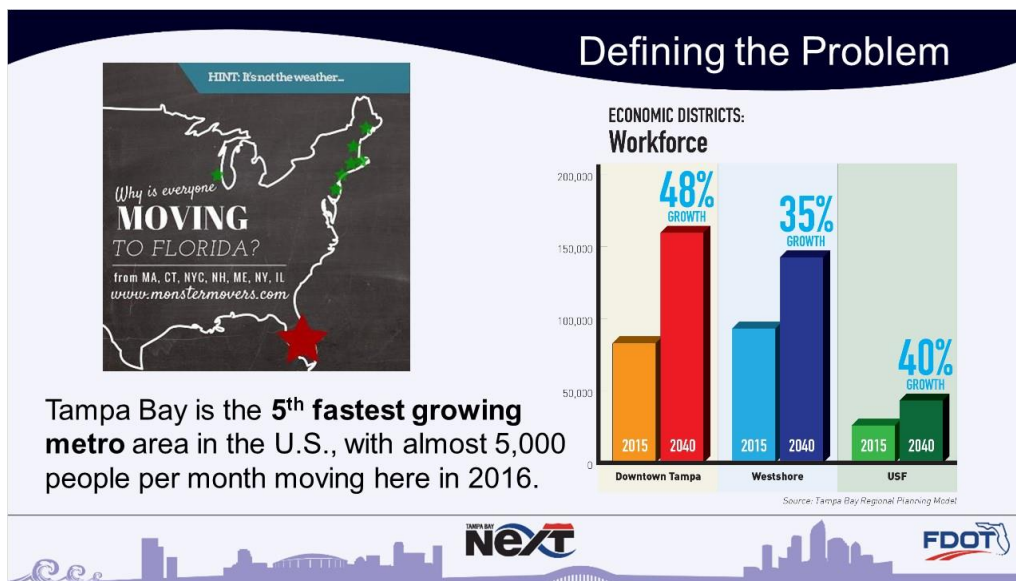


What trends will shape what Tampa Bay looks like in 2045?



Key drivers of change for the Atlanta Region





Tampa Bay Next



is a process of working with the community to come up with an action plan for transportation.

Tampa Bay Next **FDOT**

The Program Includes:

Interstate Modernization



Transit



Bicycle/Pedestrian Facilities



Complete Streets



Transportation Innovation



Freight Mobility



Interstate Modernization

Project	Public Hearing	Preferred Alternative
Howard Frankland Bridge	Fall 2017	Express Lanes (4 non-tolled)
Westshore Area Interchange (SEIS)	Early 2019	Evaluating Express Lanes and other concepts
Westshore to Downtown Corridor (SEIS)	Early 2019	Evaluating Express Lanes and other concepts
Downtown Interchange (SEIS)	Early 2019	Evaluating Express Lanes and other concepts
I-275 Innovation Corridor	Early 2019	Evaluating Express Lanes and other concepts
I-4 and Connector	October 2015	Express Lanes
I-75 Operational Improvements	TBD	TBD



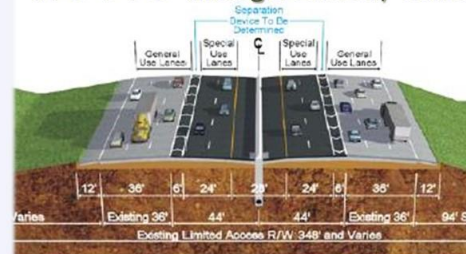
Interstate Modernization

Other Concepts Being Evaluated

- Converting I-275 to a Boulevard north of Downtown Tampa
- Beltway
- Trench
- Elevated Lanes
- Reversible Lanes
- Other Mgd. Lane Options
- Transit Options

MPO Chairs' Coordinating Committee High Priorities (2012)

#1: I-75 Managed Lanes w/ Transit

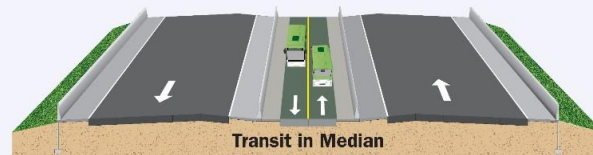


TAKE THE **Next**

FDOT

Transit

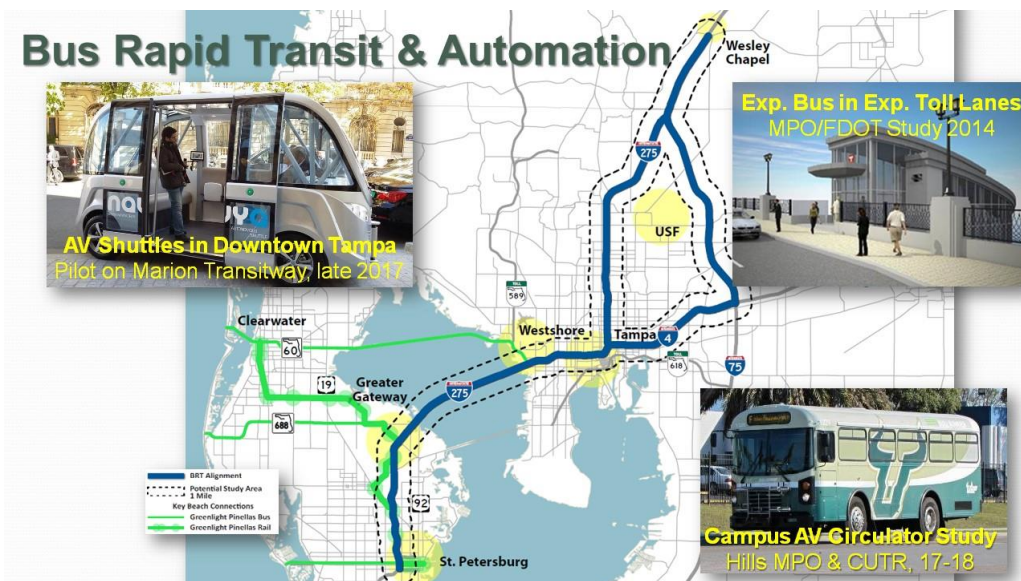
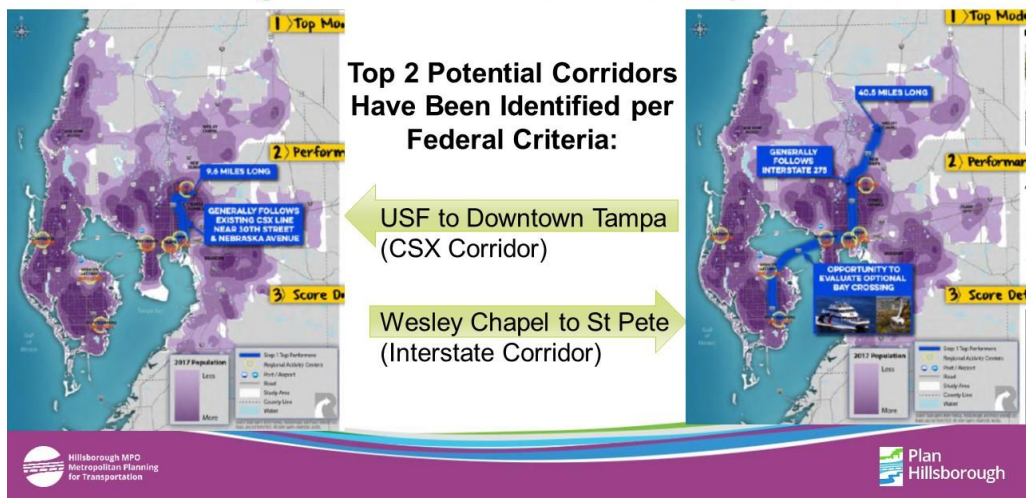
Options for Premium Transit in Interstate ROW



TAKE THE **Next**

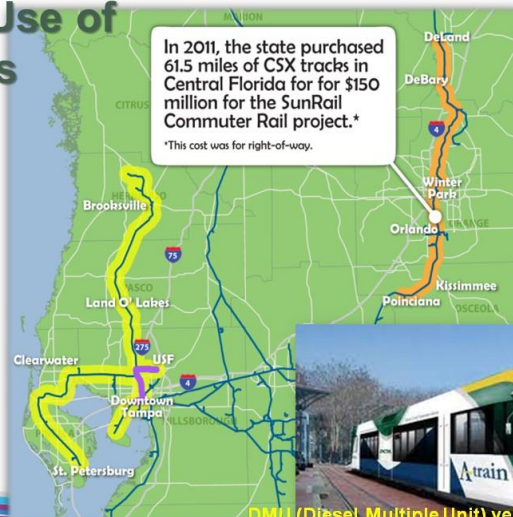
FDOT

Regional Transit Feasibility Plan

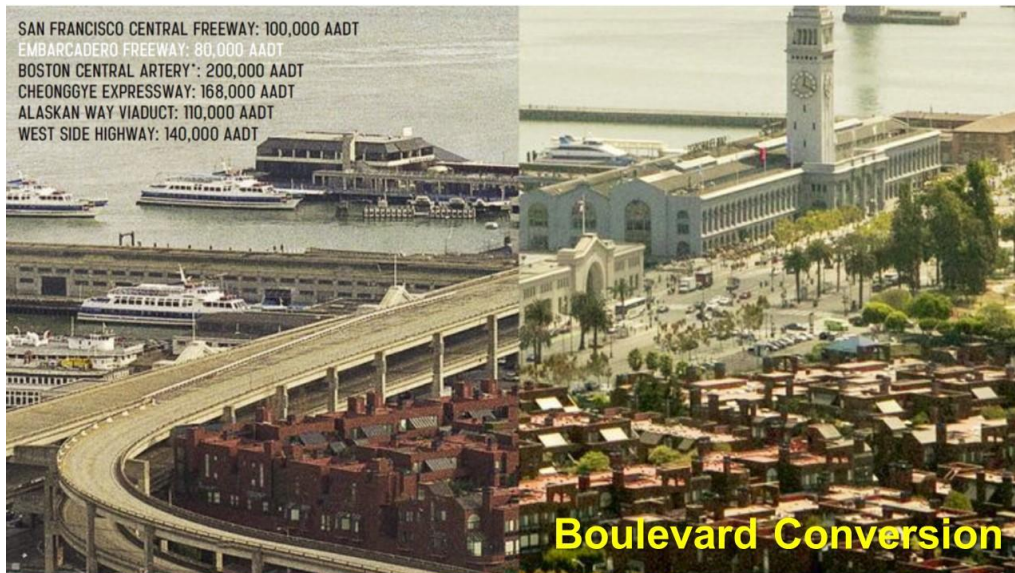


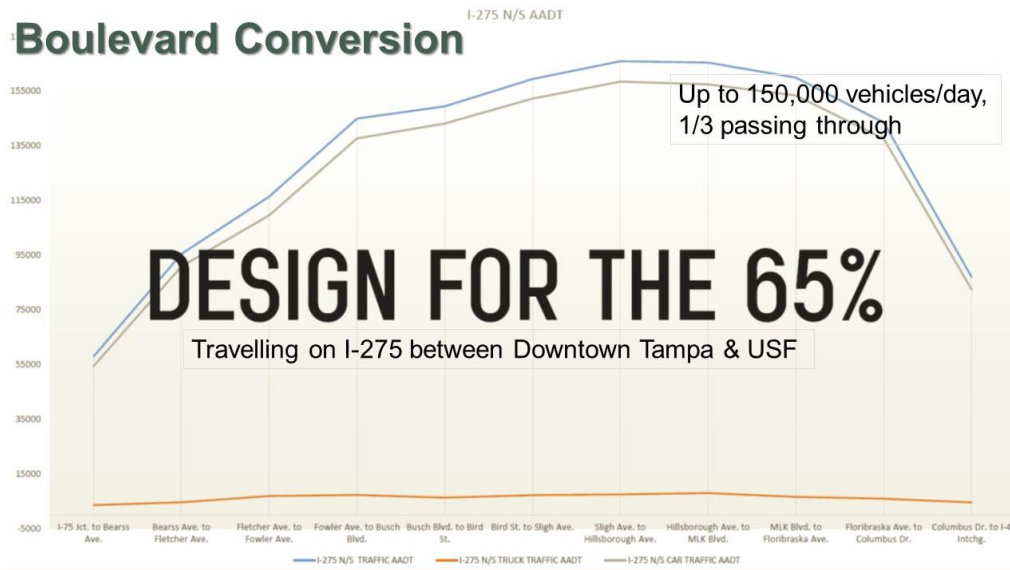
Reuse &/or Joint Use of CSX Rail Corridors

- More than 100 miles of low-use CSX track in Tampa Bay
- Potential for expansion to Clearwater, St Pete, Land O Lakes, Brooksville, So. Tampa
- SunRail- FDOT bought 61.5 miles of tracks from CSX for \$150 m **plus** track refurbishing where freight was to be re-routed
- CSX was operating up to 30 freight trains/day on the SunRail corridor, ~6 times the volume as our dead-end line



DMU (Diesel Multiple Unit) vehicle, certified crashworthy for freight tracks, Ft Worth TX

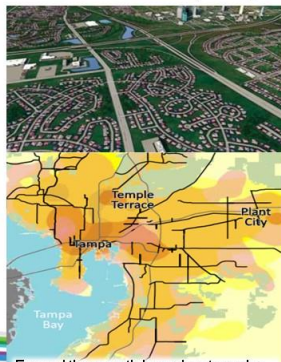




Playing out some very different futures

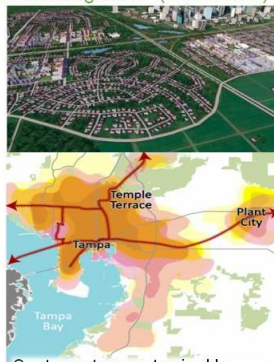
Hillsborough's *Imagine 2040* Scenarios were a combo of transportation & development decisions

A. "Suburban Dream" (Trend)



Expand the growth boundary to make room for new suburbs. Extend roads & water lines, rebuild major intersections.

B. "Bustling Metro" (Rail & TOD)



Create new town centers in older commercial areas. Add rapid bus, rail, circulator shuttles, walk/bike connections.

C. "New Corporate Ctrs." (on Exp. Lanes)



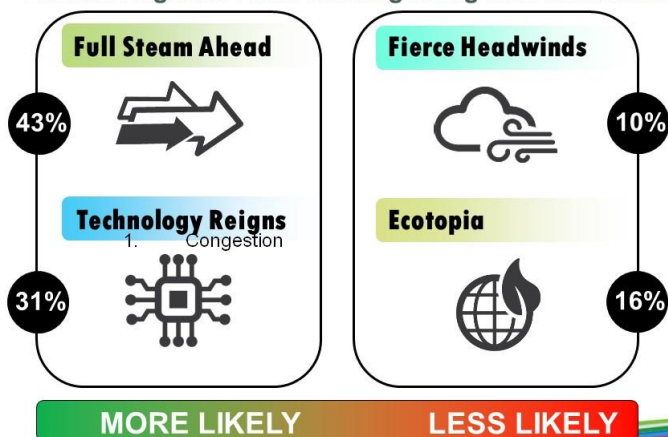
Create new corporate parks along major highways. Add new express toll lanes in the interstates (I-4, I-75, I-275).



Tampa Bay TMA Role



Atlanta Region's Plan: online gaming beta test results

What might scenarios for the Tampa Bay TMA look like?






Moving Forward Together

Playing out some very different futures

- Trend Plus Technology?
- Boulevard Plus Beltway?
- Rail Reuse Plus Max T.O.D.?
- What else?



Give us your thoughts by text!

To get started, text the word **PLANCOM** to the number **22333**.



Question 1: What “big ideas” or **drivers of change** could most affect how & where we grow? (Select 3)

- | | |
|---|---|
| 1. Vacant land availability | 7. Shared mobility services |
| 2. Declining gas tax, more reliance on tolls & fees | 8. Aging population |
| 3. Dramatic traffic growth | 9. Income inequality |
| 4. Deferred maintenance | 10. Access to job centers |
| 5. Investing in fixed transit | 11. Tourism industry strength |
| 6. Automated vehicles | 12. Freight/logistics industry strength |
| | 13. Climate change |



Question 2: What are the best strategies to **accommodate population growth**? (Select 2)

- | | |
|--|--|
| 1. Redevelop cities & older suburbs at higher densities | 4. Develop agricultural land as needed |
| 2. Redevelop older commercial strip corridors as townhomes & apts. | 5. Develop new towns in outlying areas |
| 3. Re/develop around new fixed-guideway transit stations | 6. Develop along interstate hwy & expressway corridors |
| | 7. Don't accommodate it |
| | 8. Other |



Question 3: For our future populations' needs, how should we **focus transportation resources**? (Select 3)

- | | |
|--|---|
| 1. Add lanes to interstate hwys | 7. Better bus service in counties |
| 2. Build more elevated hwys | 8. Transit connecting counties |
| 3. Widen 4-6 lane rds to 6-8 lanes | 9. First commuter/light rail line |
| 4. Innovative intersections & interchanges | 10. Walk & bike facilities |
| 5. Advanced traffic management systems & AV/CV readiness | 11. Step up safety improvements & traffic calming |
| 6. Maintain pavement & bridges | 12. Better freight rail & truck routes |
| | 13. Other |



Closing Questions

What is your home zip code?

https://www.poll Everywhere.com/free_text_polls/Ps32w047uVWO68w

Are there any additional things we should consider?

https://www.poll Everywhere.com/free_text_polls/7kgAvB2LfzXUD7e



Regional Transit Feasibility Plan Presentation

Scott Pringle



1

What is the project to be built?



(Emphasis of the Regional
Transit Feasibility Plan)

2

How is it funded?

3

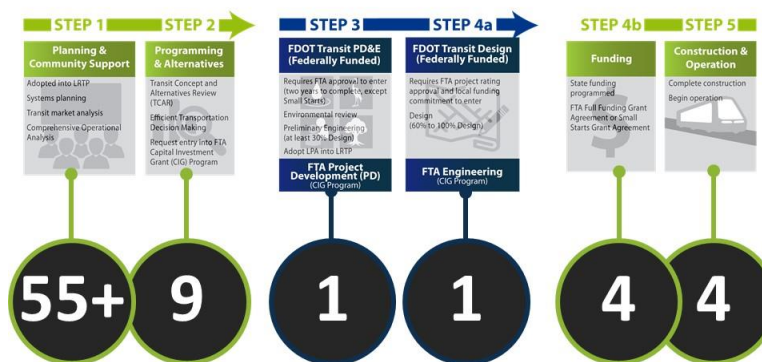
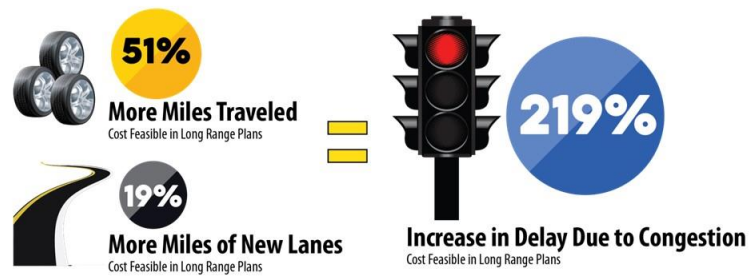
Who is responsible for building and
maintaining it?



APPROACH

Traveling to Our Regional Centers in 2040...

Source: Adopted MPO Long Range Transportation Plans (Hillsborough, Pasco, and Pinellas)



Number of Projects Over the Past 30+ Years in Tampa Bay



Purpose of the Plan

- ✓ Projects that have the greatest potential to be funded (compete for state and federal grants) and implemented
- ✓ Projects that are the most forward thinking and make the best use of today's technology
- ✓ Projects that best serve our region today while supporting tomorrow's growth

APPROACH

Regional Transit Feasibility Plan
www.TRRegionalTransit.com

2016				2017				2018							
Oct - Dec	Jan - Apr	May - Aug	Sep	Oct	Nov	Dec	Jan	Feb	Mar	Apr	May	Jun	July	Aug	Sep
Study Management, Coordination, and Outreach															
Step 1: WHERE				Step 2: WHAT				Step 3: HOW				Community Vetting Period			
				Draft Implementation Plan				Implementation Plan							

	90+	Presentations/meetings
	600+	Participants
	7,000+	Website visits
	500+	Social media posts
	14+	New Articles
	450+	Comments Received

SCHEDULE AND OUTREACH

Regional Transit Feasibility Plan
www.TRRegionalTransit.com

WHAT WE'VE HEARD

"Rail has left the station, focus on rubber tire"

"Stop talking, start building"

"Autonomous vehicles are a no brainer"

"Focus on land use and economic growth"

"Need frequent rail transit"

"Use CSX"

"Need a connection to the airport"



www.TRRegionalTransit.com

SCHEDULE AND OUTREACH

STEP 1:

WHERE ARE THE TOP PERFORMING CONNECTIONS?

STEP 2:

WHAT ARE THE BEST PROJECTS?

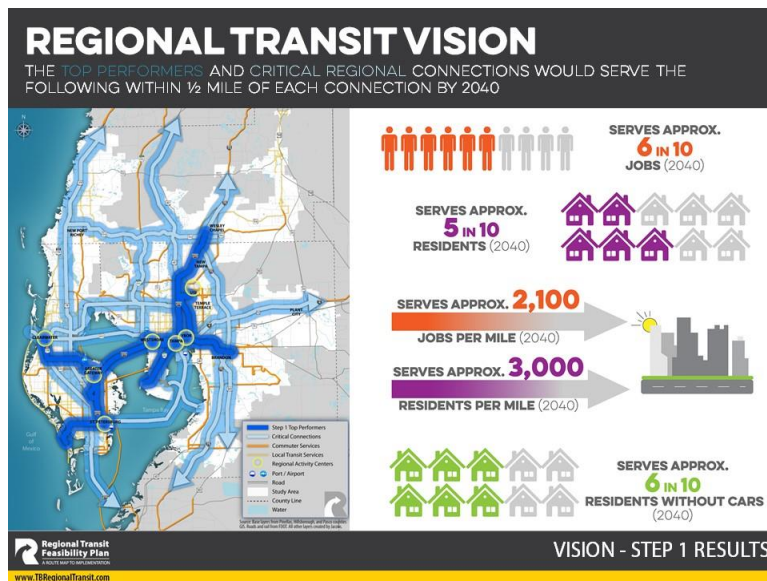
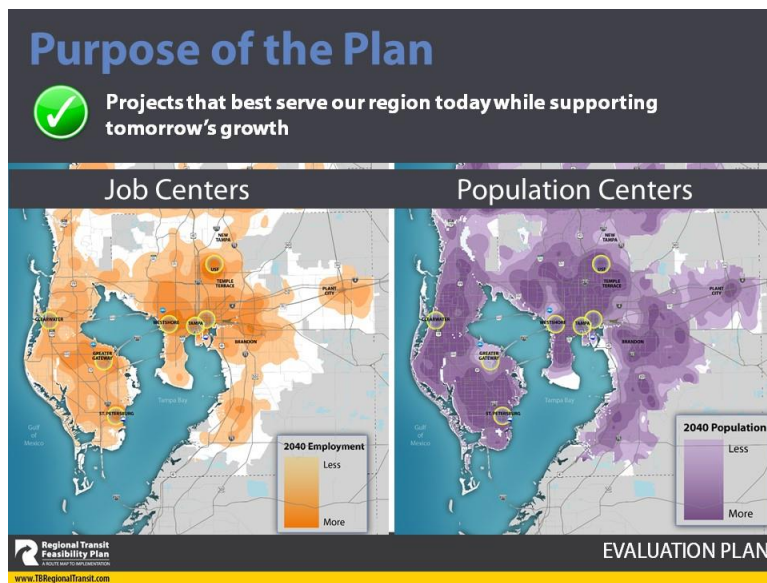
STEP 3:

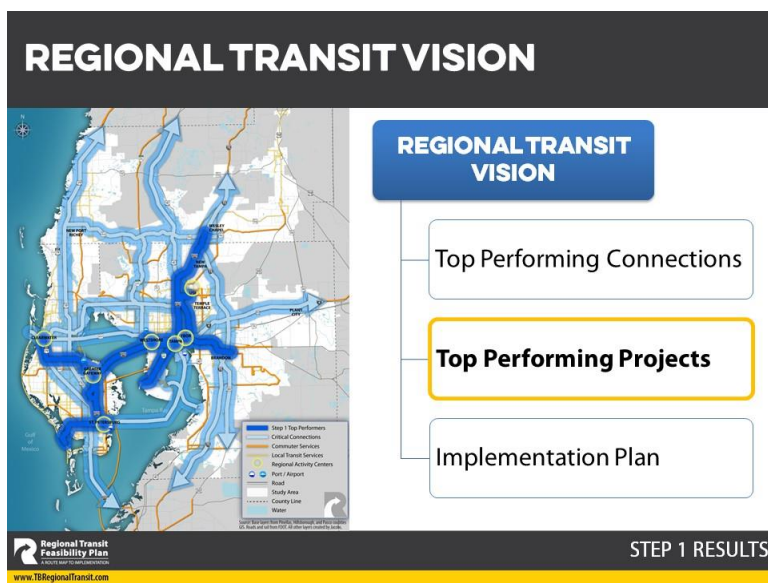
HOW AND WHEN ARE PROJECTS BUILT?



www.TRRegionalTransit.com

EVALUATION PLAN





CHOOSING MODES


Understanding the travel needs of riders along and near each of the top connections illustrates which modes best serve that need, such as:

- Capacity
- Average Trip Distance
- Type of Work Trips
- Population Characteristics




EMERGING AUTONOMOUS SOLUTIONS

- ✓ Projects that have the greatest potential to be funded (compete for state & federal grants) and implemented
- ✓ **PROJECTS THAT ARE THE MOST FORWARD THINKING AND MAKE THE BEST USE OF TODAY'S TECHNOLOGY**
- ✓ Projects that best serve our region today while supporting tomorrow's growth



Autonomous Solutions

- Rail
- Rubber Tire

 Regional Transit Feasibility Plan
www.TRRegionalTransit.com

TRANSIT MODES

EMERGING AUTONOMOUS SOLUTIONS

NAVYA ARMA SHUTTLE Operating in Switzerland and France



EASYMILE Operating in the Netherlands, Australia, Singapore



MITSUBISHI Delivered to Tampa International Airport

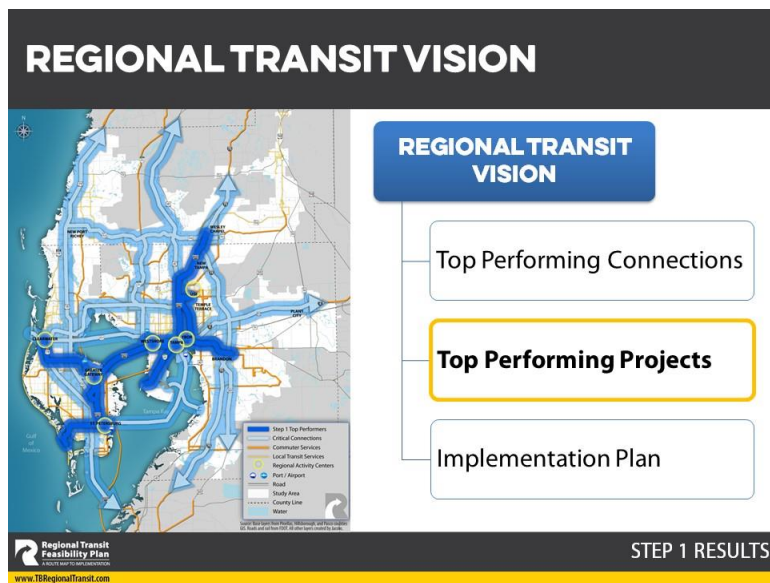


2GETTHERE Operating in Netherlands



 Regional Transit Feasibility Plan
www.TRRegionalTransit.com

TRANSIT MODES



STEP 2 PROJECTS: TECHNICAL RANKING

Rank	Connection	Mode
1	(I-275) Wesley Chapel, USF, Tampa, Gateway, St. Petersburg	Rubber Tire in Exclusive Lane
1	(CSX North) Downtown Tampa to USF	Rubber Tire in Exclusive Lane
3	(CSX North) Downtown Tampa to USF	Light Rail
4	(I-275) Wesley Chapel, USF, Tampa, Gateway, St. Petersburg	Light Rail
5	Westshore to Brandon	Rubber Tire in Exclusive Lane
6	(I-275) Wesley Chapel, USF, Tampa, Gateway, St. Petersburg	Rubber Tire in Toll Lanes
6	(I-275) Wesley Chapel, USF, Tampa, Gateway, St. Petersburg	Commuter Rail
6	(CSX North) Downtown Tampa to USF	Commuter Rail
9	Westshore to Brandon	Light Rail
10	(CSX South) South Tampa to Downtown Tampa	Light Rail
11	Clearwater, Gateway, St. Petersburg	Rubber Tire in Exclusive Lane
12	Clearwater, Gateway, St. Petersburg	Light Rail
13	Westshore to Brandon	Commuter Rail
13	(CSX South) South Tampa to Downtown Tampa	Rubber Tire in Exclusive Lane
13	(CSX South) South Tampa to Downtown Tampa	Elevated Rail

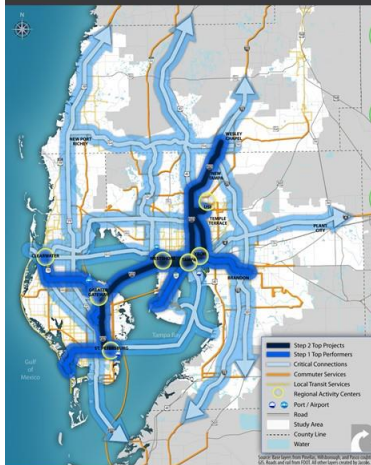
STEP 2 PROJECTS: PUBLIC OPINION RANKING

Rank	Connection	Mode
1	(I-275) Wesley Chapel, USF, Tampa, Gateway, St. Petersburg	Light Rail
2	(I-275) Wesley Chapel, USF, Tampa, Gateway, St. Petersburg	Rubber Tire in Exclusive Lane
3	(CSX North) Downtown Tampa to USF	Light Rail
4	(I-275) Wesley Chapel, USF, Tampa, Gateway, St. Petersburg	Commuter Rail
5	Clearwater, Gateway, St. Petersburg	Light Rail
6	(CSX South) South Tampa to Downtown Tampa	Light Rail
7	Westshore to Brandon	Light Rail
8	(CSX North) Downtown Tampa to USF	Commuter Rail
9	(CSX North) Downtown Tampa to USF	Rubber Tire in Exclusive Lane
10	Westshore to Brandon	Rubber Tire in Exclusive Lane
11	(I-275) Wesley Chapel, USF, Tampa, Gateway, St. Petersburg	Rubber Tire in Toll Lane
12	Clearwater, Gateway, St. Petersburg	Rubber Tire in Exclusive Lane
13	Westshore to Brandon	Commuter Rail
14	(CSX South) South Tampa to Downtown Tampa	Rubber Tire in Exclusive Lane
15	(CSX South) South Tampa to Downtown Tampa	Elevated Rail

STEP 2 PROJECTS: PRELIMINARY RANKING

Rank	Connection	Mode
1	(I-275) Wesley Chapel, USF, Tampa, Gateway, St. Petersburg	Light Rail
2	(I-275) Wesley Chapel, USF, Tampa, Gateway, St. Petersburg	Rubber Tire in Exclusive Lane
3	(CSX North) Downtown Tampa to USF	Light Rail
4	(CSX North) Downtown Tampa to USF	Rubber Tire in Exclusive Lane
5	(I-275) Wesley Chapel, USF, Tampa, Gateway, St. Petersburg	Commuter Rail
5	(CSX North) Downtown Tampa to USF	Commuter Rail
7	Westshore to Brandon	Rubber Tire in Exclusive Lane
7	Westshore to Brandon	Light Rail
9	(I-275) Wesley Chapel, USF, Tampa, Gateway, St. Petersburg	Rubber Tire in Toll Lane
9	(CSX South) South Tampa to Downtown Tampa	Light Rail
11	Clearwater, Gateway, St. Petersburg	Light Rail
12	Clearwater, Gateway, St. Petersburg	Rubber Tire in Exclusive Lane
13	Westshore to Brandon	Commuter Rail
13	(CSX South) South Tampa to Downtown Tampa	Rubber Tire in Exclusive Lane
13	(CSX South) South Tampa to Downtown Tampa	Elevated Rail

STEP 2 RESULTS: TOP PERFORMING PROJECTS



- ✓ Projects that have the greatest potential to be funded (compete for state and federal grants)
- ✓ Projects that are the most forward thinking and make the best use of today's technology
- ✓ Projects that best serve our region today while supporting tomorrow's growth

(I-275) Wesley Chapel, USF, Tampa, Gateway, St. Petersburg

(CSX North) Downtown Tampa to USF

NEXT STEPS

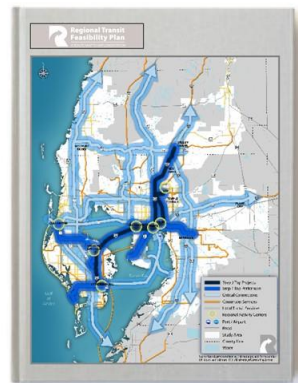


- Alignments and phasing
- Value engineering (optimizing efficiencies)
- Prioritizing for implementation
- Preliminary costs

EXPECTED OUTCOME

The  **Regional Transit Feasibility Plan** will:

- 1A** Develop a plan to build each project in the Regional Transit Vision
- 1B** Provide the information needed to request entrance of a catalyst project(s) into the federal program





Roundtable Discussions

- **Florida Department of Transportation/District Seven**
- **Hillsborough County Metropolitan Planning Organization**
- **Regional Transit Feasibility Plan**

