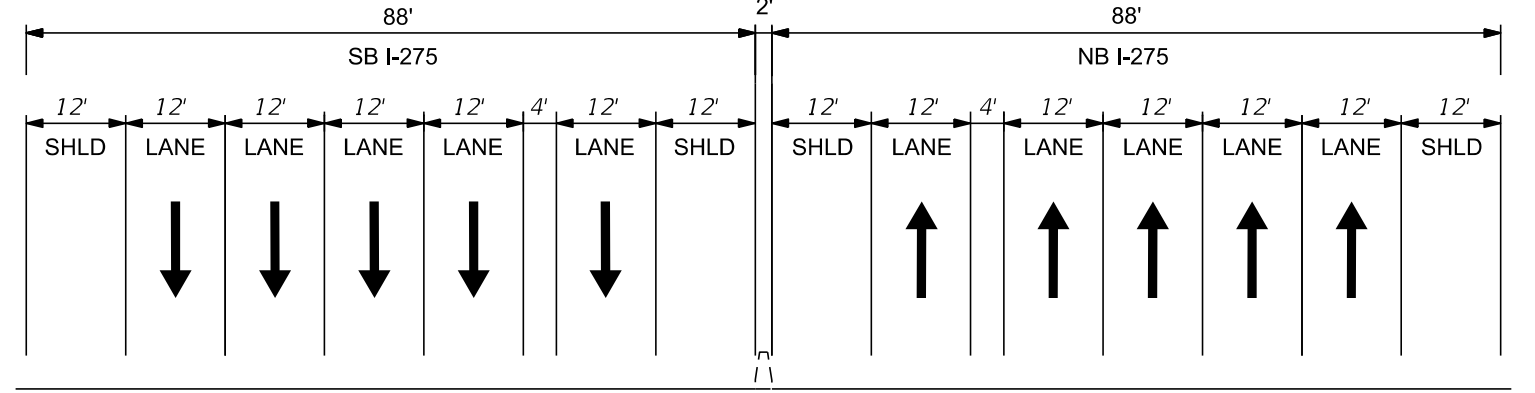
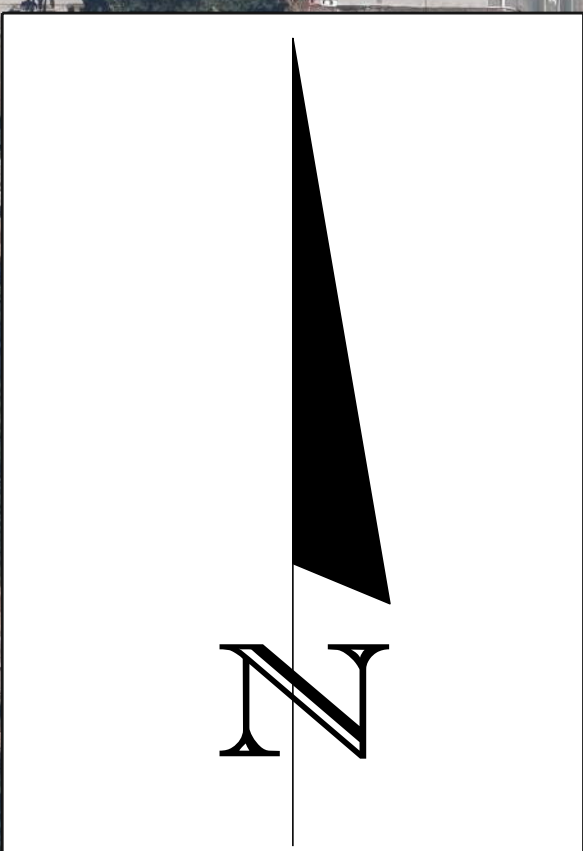
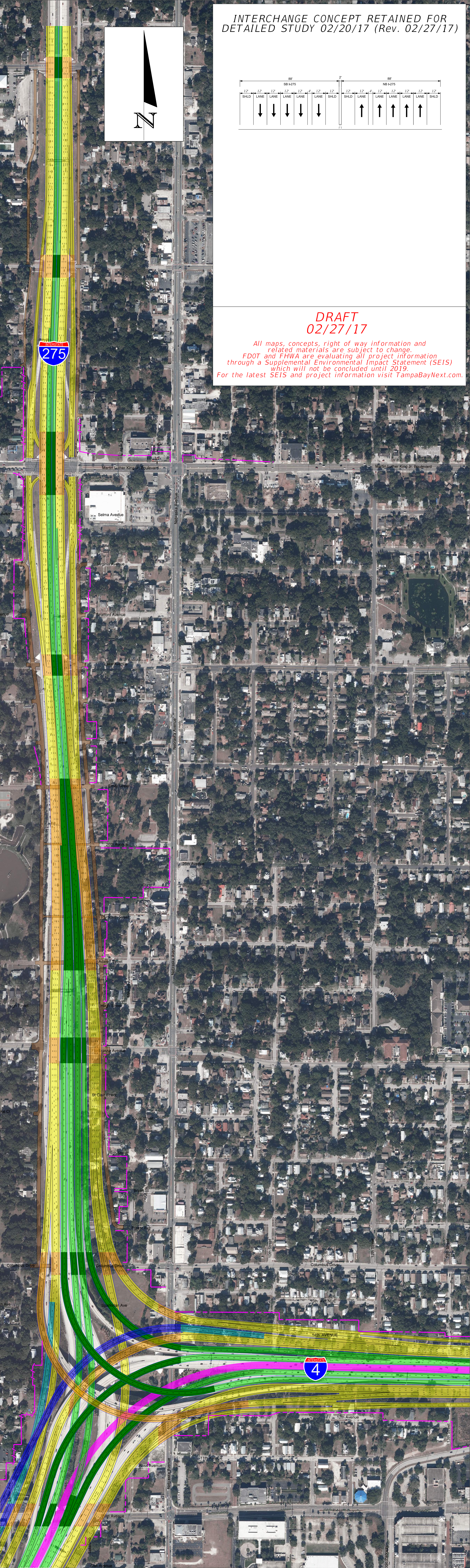


INTERCHANGE CONCEPT RETAINED FOR  
DETAILED STUDY 02/20/17 (Rev. 02/27/17)

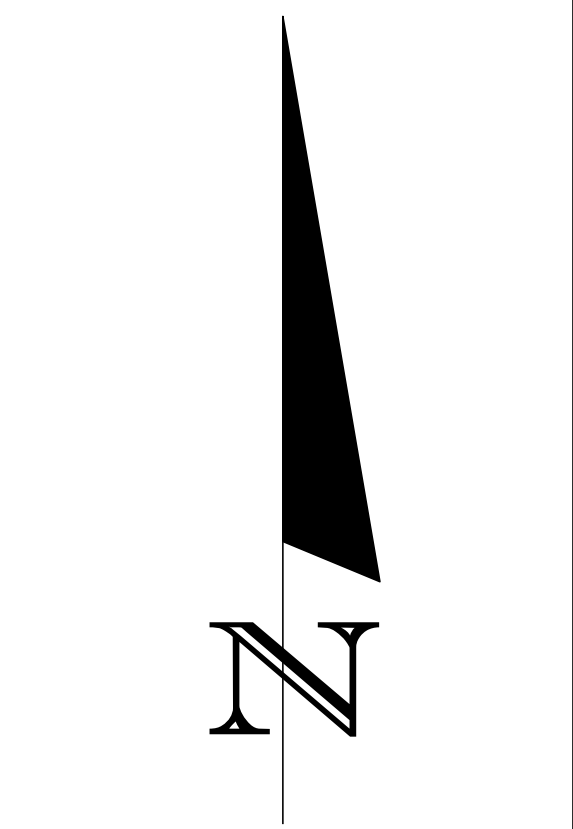
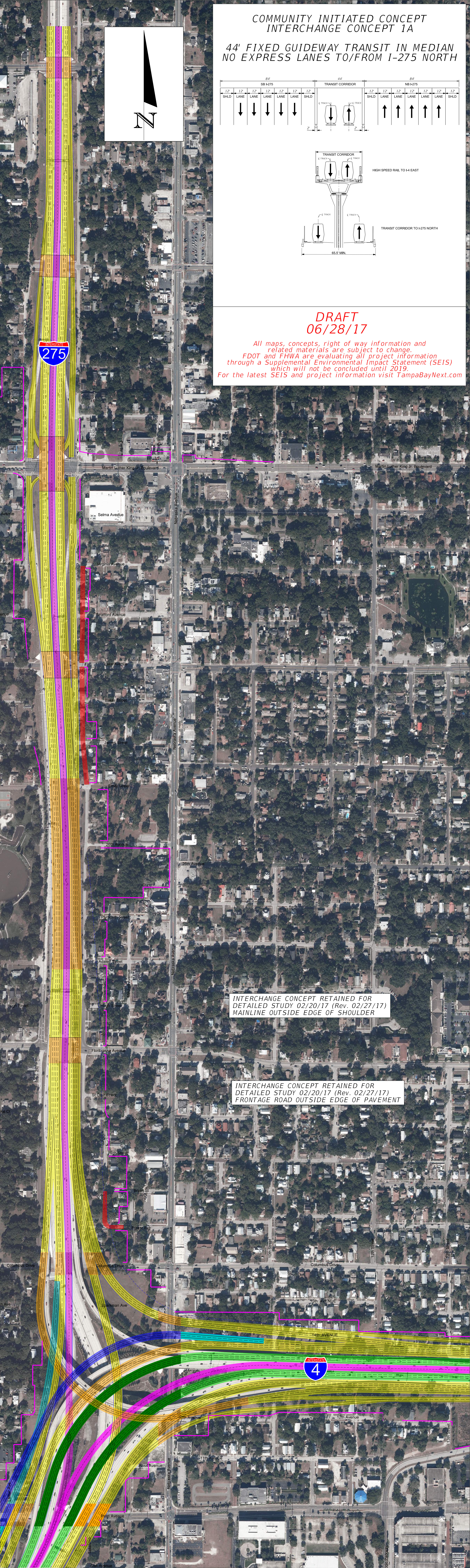


**DRAFT**  
**02/27/17**

All maps, concepts, right of way information and related materials are subject to change. FDOT and FHWA are evaluating all project information through a Supplemental Environmental Impact Statement (SEIS) which will not be concluded until 2019. For the latest SEIS and project information visit [TampaBayNext.com](http://TampaBayNext.com).

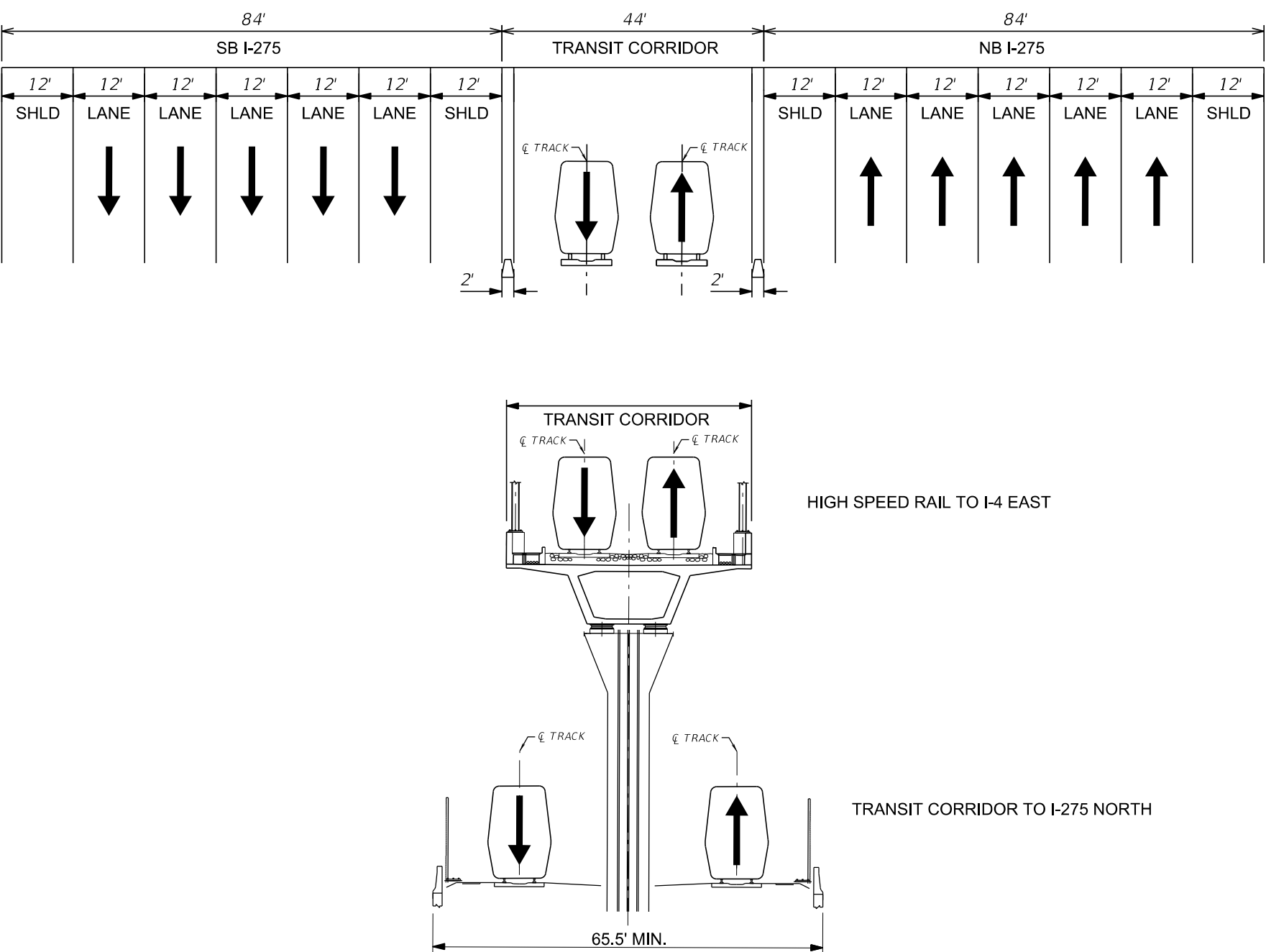






COMMUNITY INITIATED CONCEPT  
INTERCHANGE CONCEPT 1A

44' FIXED GUIDEWAY TRANSIT IN MEDIAN  
NO EXPRESS LANES TO/FROM I-275 NORTH



DRAFT  
06/28/17

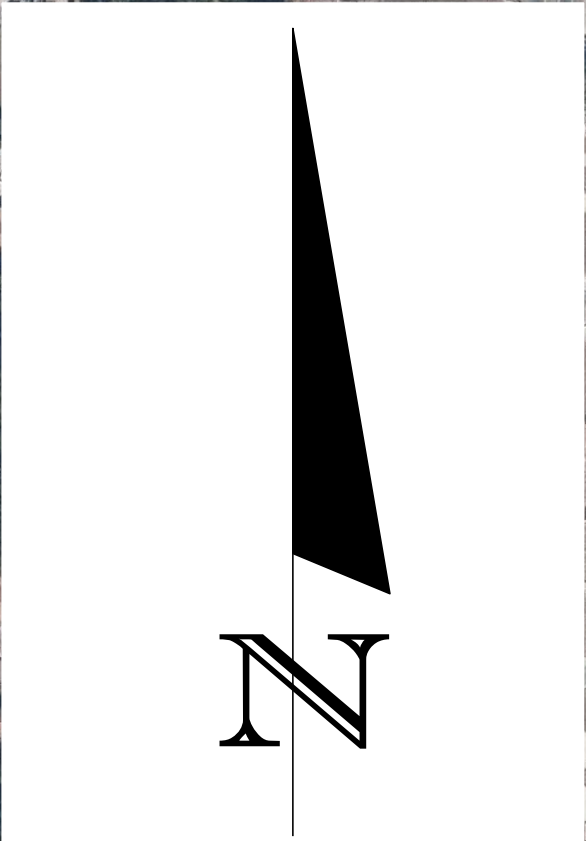
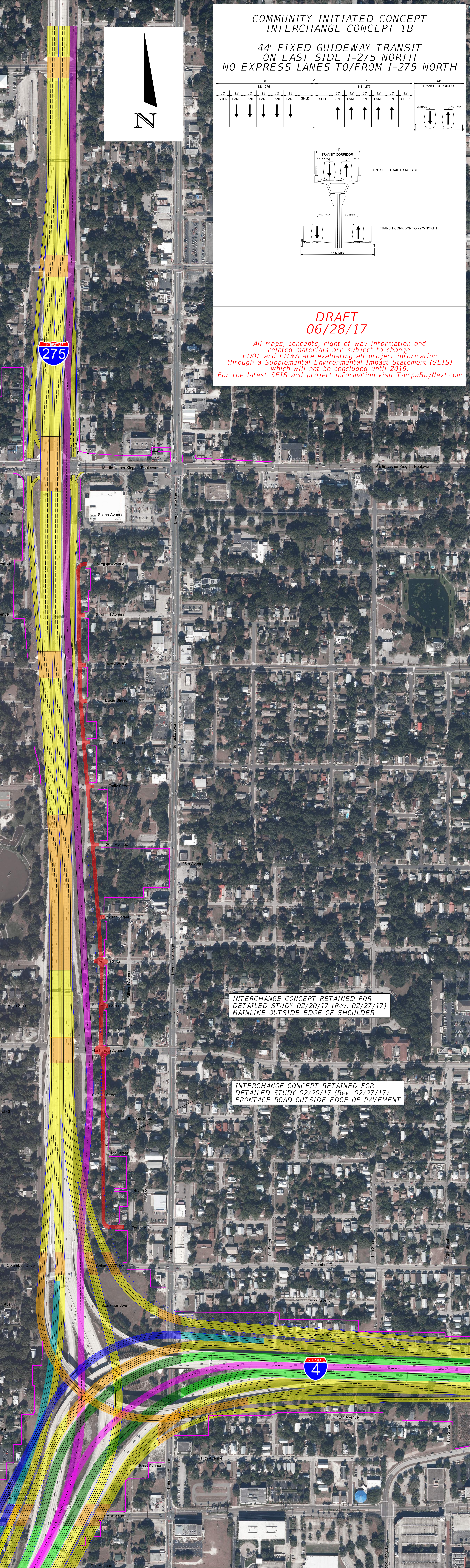
All maps, concepts, right of way information and related materials are subject to change. FDOT and FHWA are evaluating all project information through a Supplemental Environmental Impact Statement (SEIS) which will not be concluded until 2019. For the latest SEIS and project information visit [TampaBayNext.com](http://TampaBayNext.com)

INTERCHANGE CONCEPT RETAINED FOR  
DETAILED STUDY 02/20/17 (Rev. 02/27/17)  
MAINLINE OUTSIDE EDGE OF SHOULDER

INTERCHANGE CONCEPT RETAINED FOR  
DETAILED STUDY 02/20/17 (Rev. 02/27/17)  
FRONTAGE ROAD OUTSIDE EDGE OF PAVEMENT

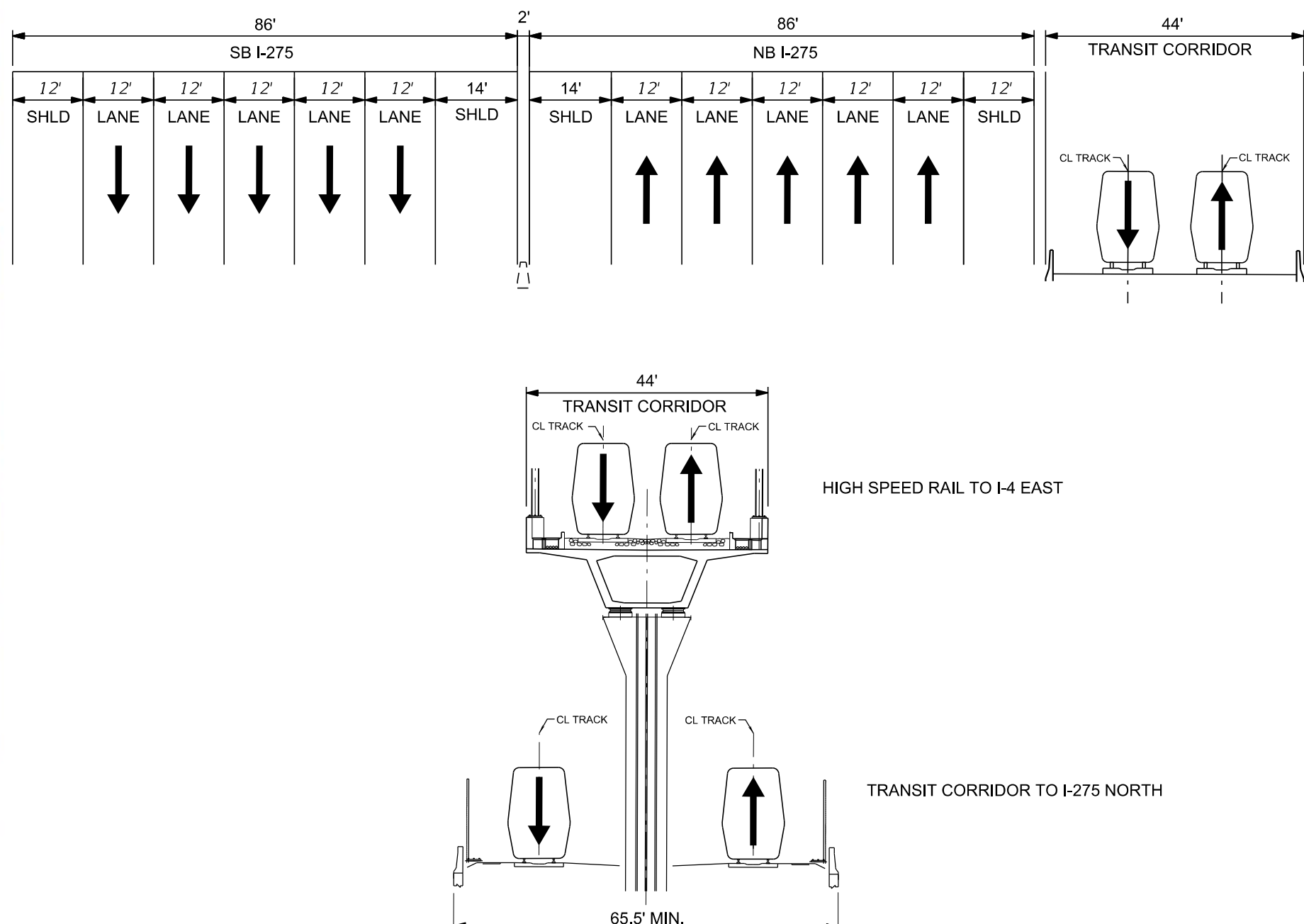






# COMMUNITY INITIATED CONCEPT INTERCHANGE CONCEPT 1B

44' FIXED GUIDEWAY TRANSIT  
ON EAST SIDE I-275 NORTH  
NO EXPRESS LANES TO/FROM I-275 NORTH



**DRAFT**  
**06/28/17**

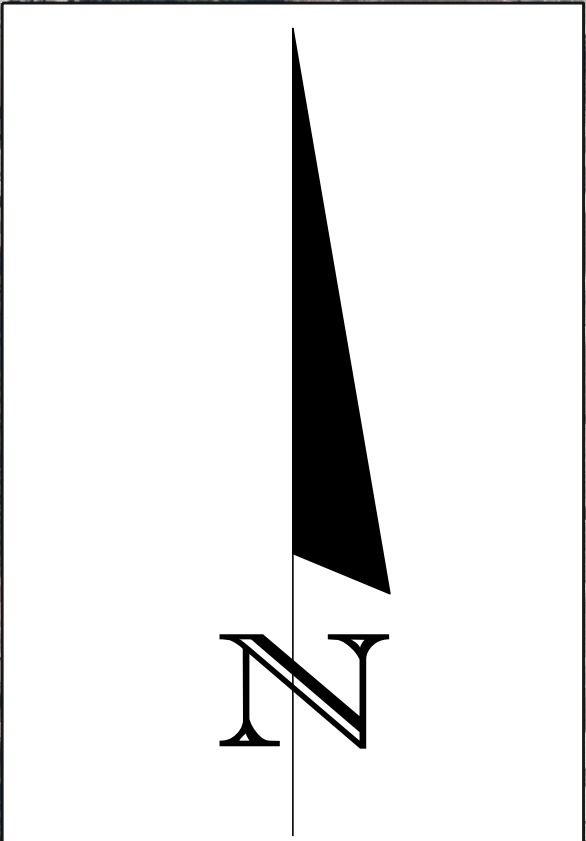
All maps, concepts, right of way information and related materials are subject to change. FDOT and FHWA are evaluating all project information through a Supplemental Environmental Impact Statement (SEIS) which will not be concluded until 2019. For the latest SEIS and project information visit [TampaBayNext.com](http://TampaBayNext.com)

INTERCHANGE CONCEPT RETAINED FOR  
DETAILED STUDY 02/20/17 (Rev. 02/27/17)  
MAINLINE OUTSIDE EDGE OF SHOULDER

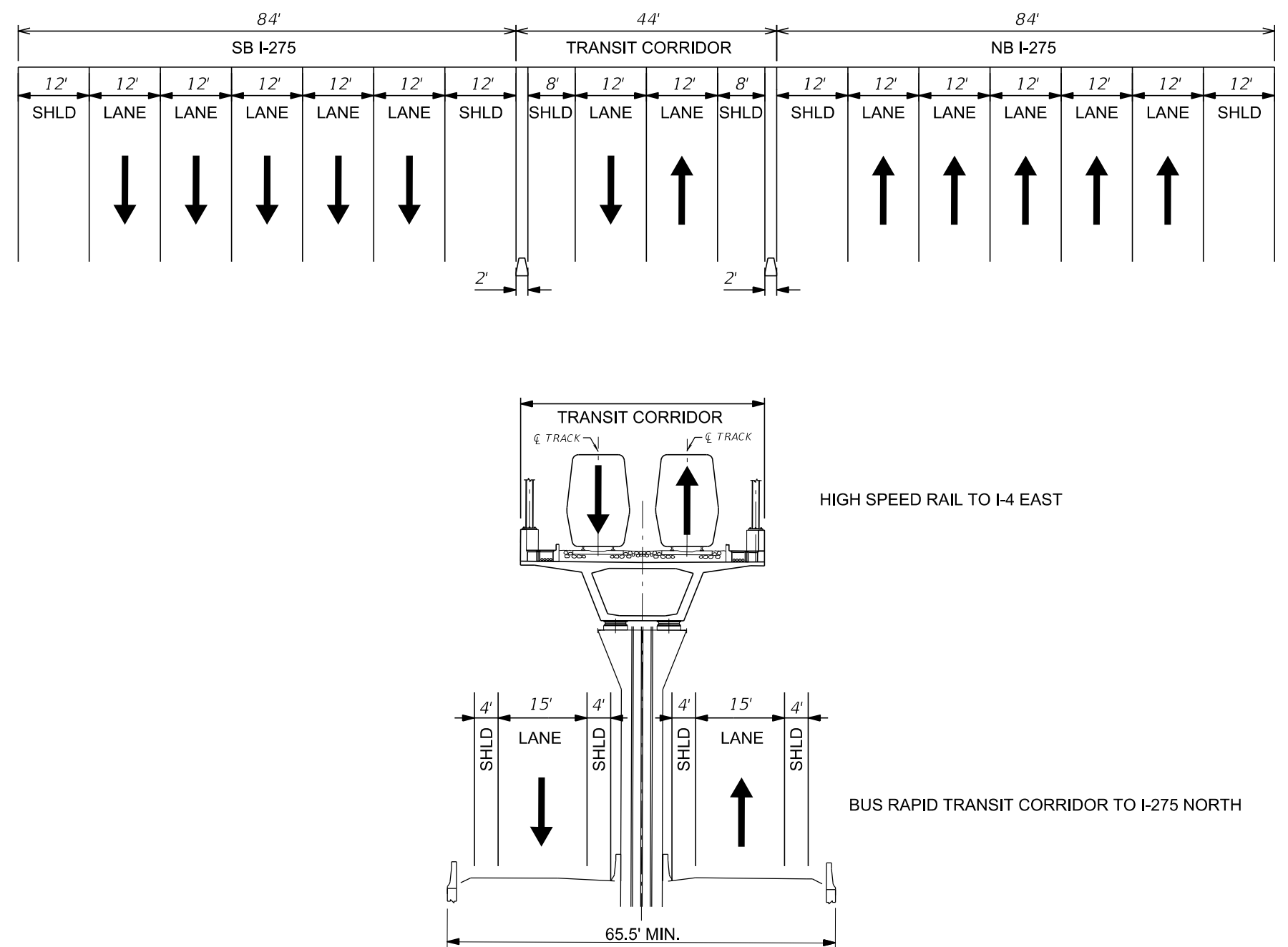
INTERCHANGE CONCEPT RETAINED FOR  
DETAILED STUDY 02/20/17 (Rev. 02/27/17)  
FRONTAGE ROAD OUTSIDE EDGE OF PAVEMENT







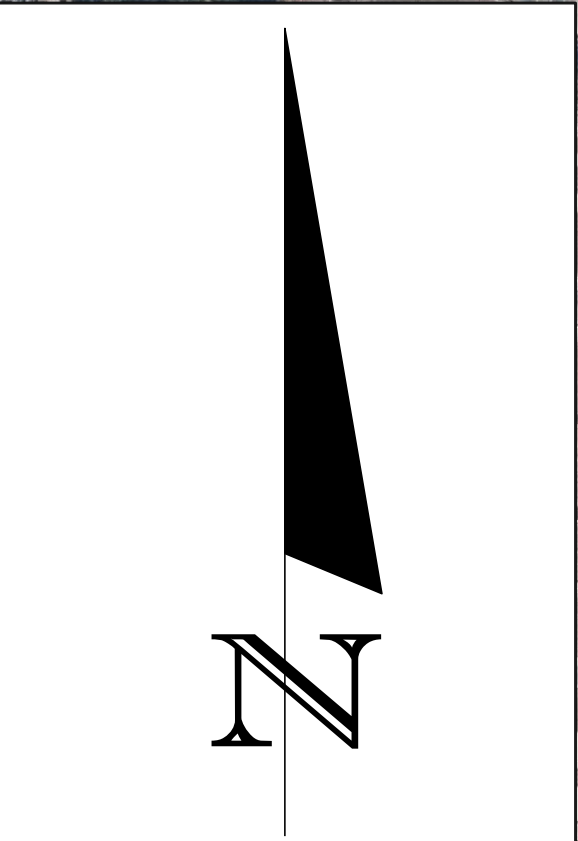
*BUS RAPID TRANSIT IN MEDIAN  
NO EXPRESS LANES FROM I-275 NORTH*



*DRAFT*  
*06/28/17*

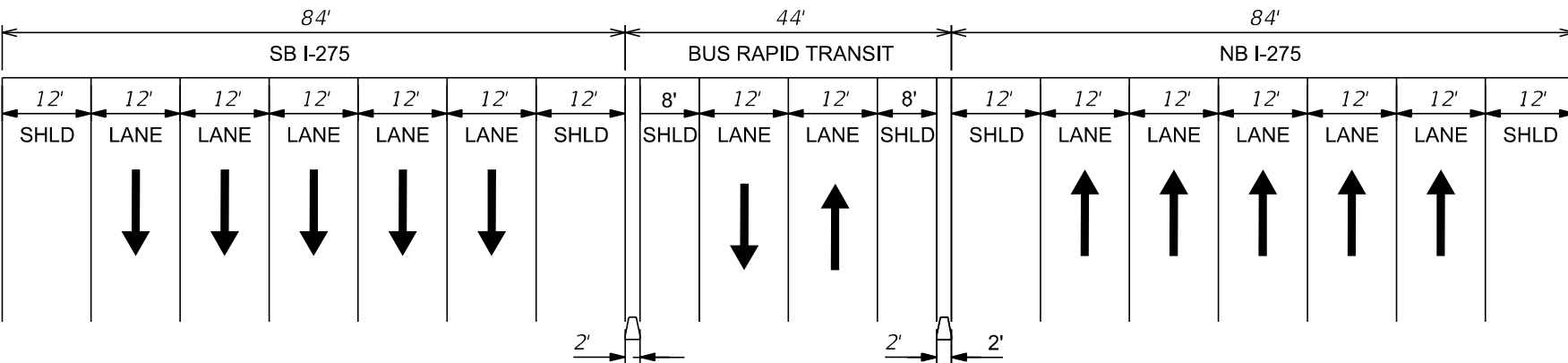
*All maps, concepts, right of way information and related materials are subject to change. FDOT and FHWA are evaluating all project information through a Supplemental Environmental Impact Statement (SEIS) which will not be concluded until 2019. For the latest SEIS and project information visit TampaBayNext.com*





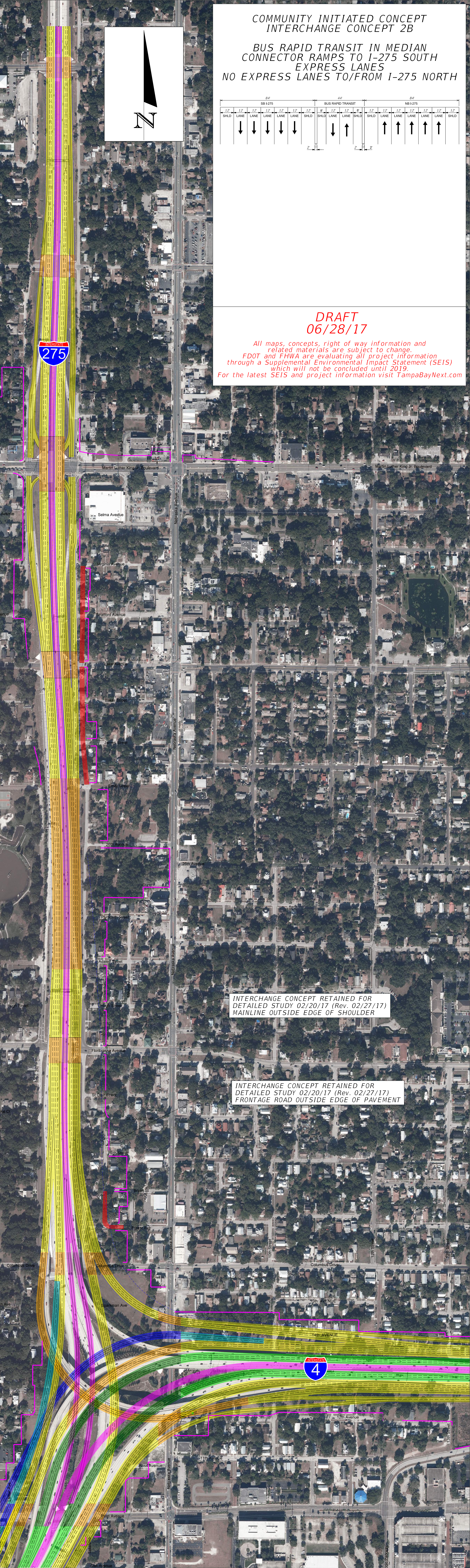
COMMUNITY INITIATED CONCEPT  
INTERCHANGE CONCEPT 2B

BUS RAPID TRANSIT IN MEDIAN  
CONNECTOR RAMPS TO I-275 SOUTH  
EXPRESS LANES  
NO EXPRESS LANES TO/FROM I-275 NORTH



DRAFT  
06/28/17

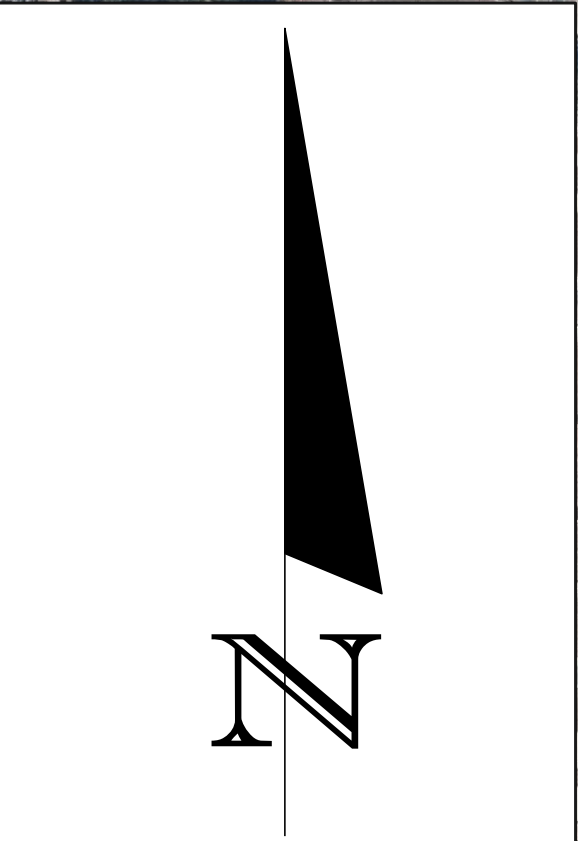
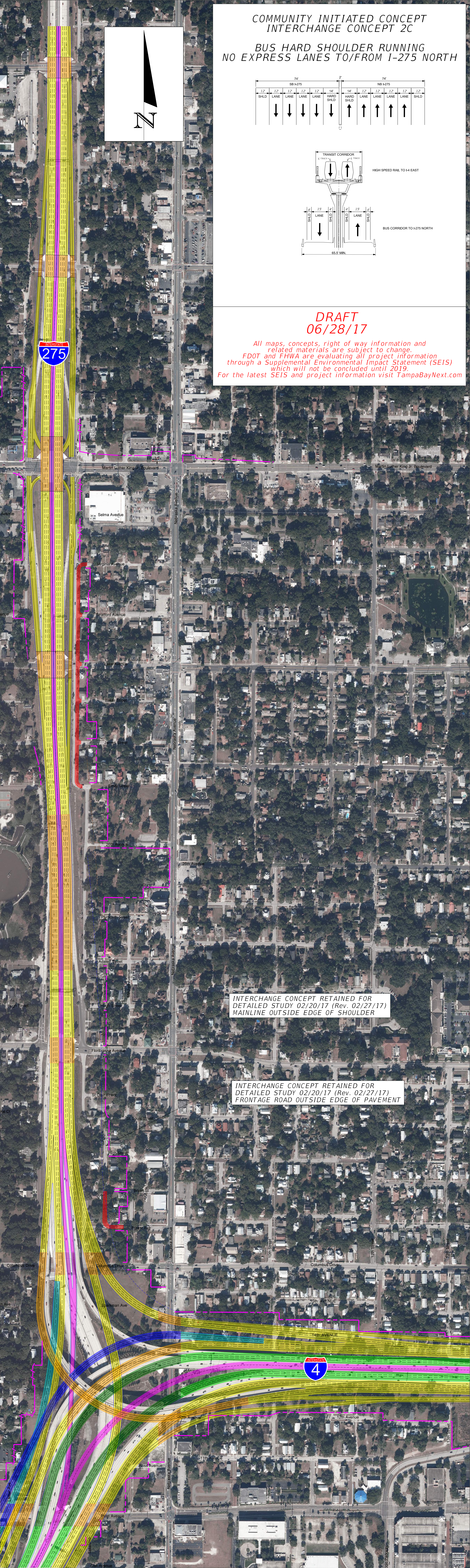
All maps, concepts, right of way information and related materials are subject to change. FDOT and FHWA are evaluating all project information through a Supplemental Environmental Impact Statement (SEIS) which will not be concluded until 2019. For the latest SEIS and project information visit [TampaBayNext.com](http://TampaBayNext.com)



INTERCHANGE CONCEPT RETAINED FOR  
DETAILED STUDY 02/20/17 (Rev. 02/27/17)  
MAINLINE OUTSIDE EDGE OF SHOULDER

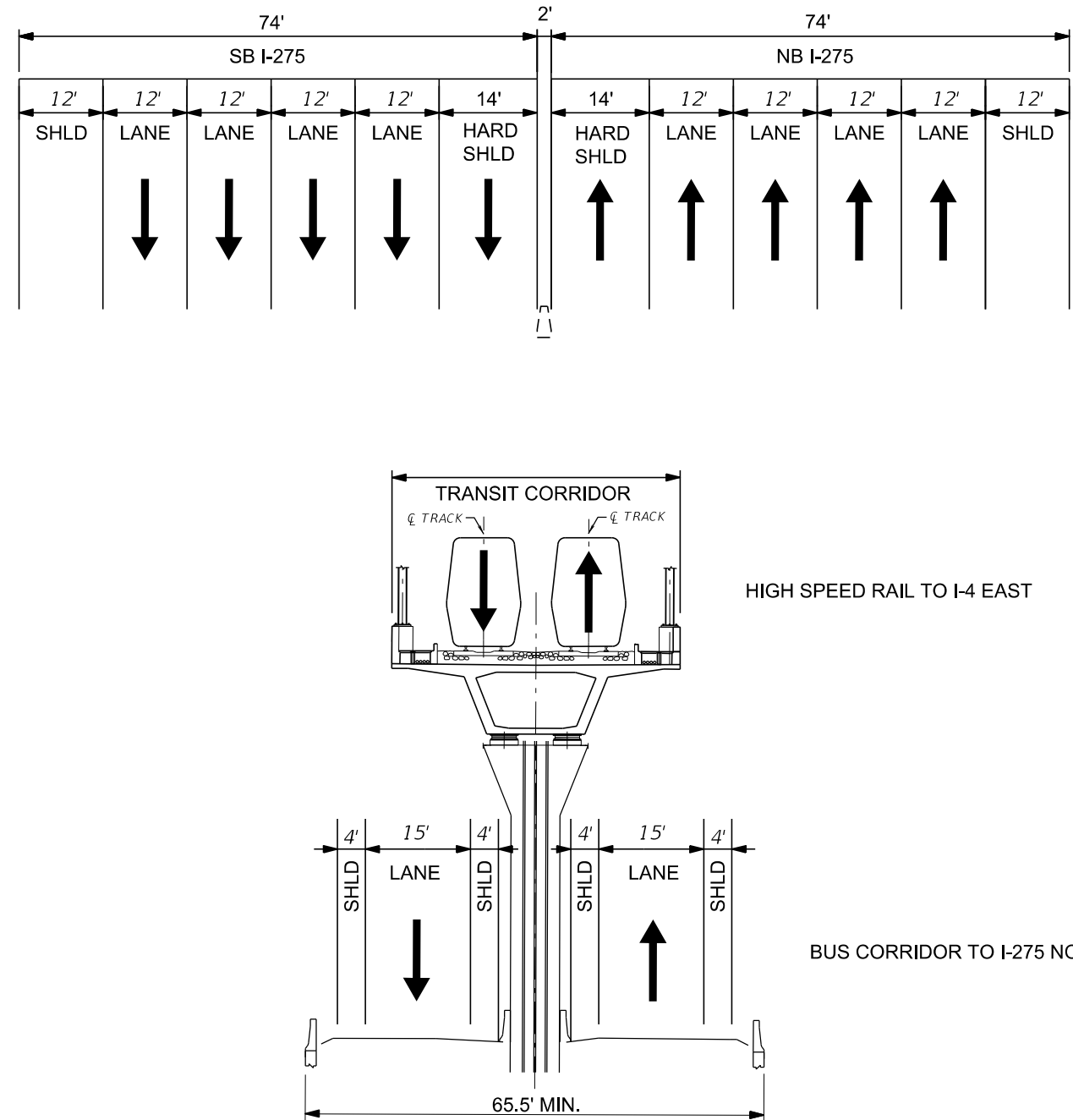
INTERCHANGE CONCEPT RETAINED FOR  
DETAILED STUDY 02/20/17 (Rev. 02/27/17)  
FRONTAGE ROAD OUTSIDE EDGE OF PAVEMENT





COMMUNITY INITIATED CONCEPT  
INTERCHANGE CONCEPT 2C

BUS HARD SHOULDER RUNNING  
NO EXPRESS LANES TO/FROM I-275 NORTH



DRAFT  
06/28/17

All maps, concepts, right of way information and related materials are subject to change. FDOT and FHWA are evaluating all project information through a Supplemental Environmental Impact Statement (SEIS) which will not be concluded until 2019. For the latest SEIS and project information visit [TampaBayNext.com](http://TampaBayNext.com)

INTERCHANGE CONCEPT RETAINED FOR  
DETAILED STUDY 02/20/17 (Rev. 02/27/17)  
MAINLINE OUTSIDE EDGE OF SHOULDER

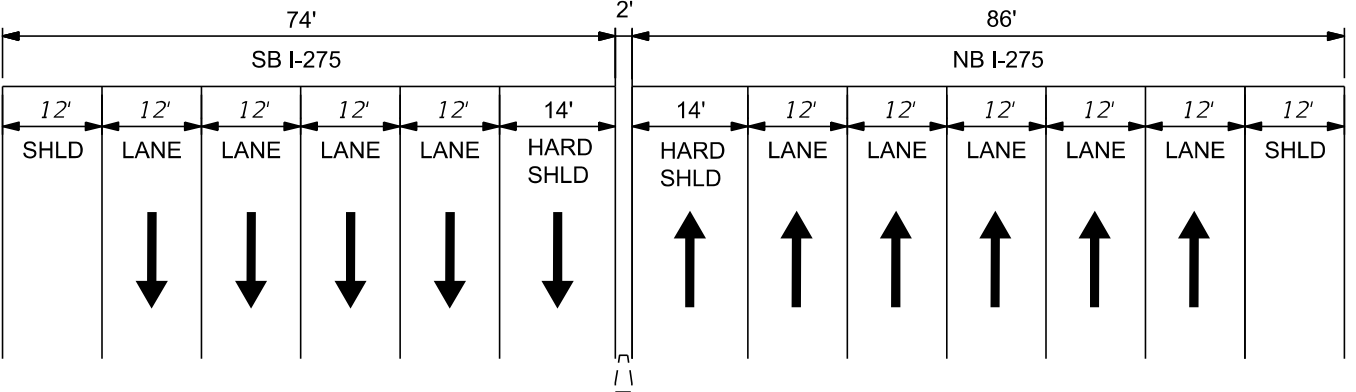
INTERCHANGE CONCEPT RETAINED FOR  
DETAILED STUDY 02/20/17 (Rev. 02/27/17)  
FRONTAGE ROAD OUTSIDE EDGE OF PAVEMENT





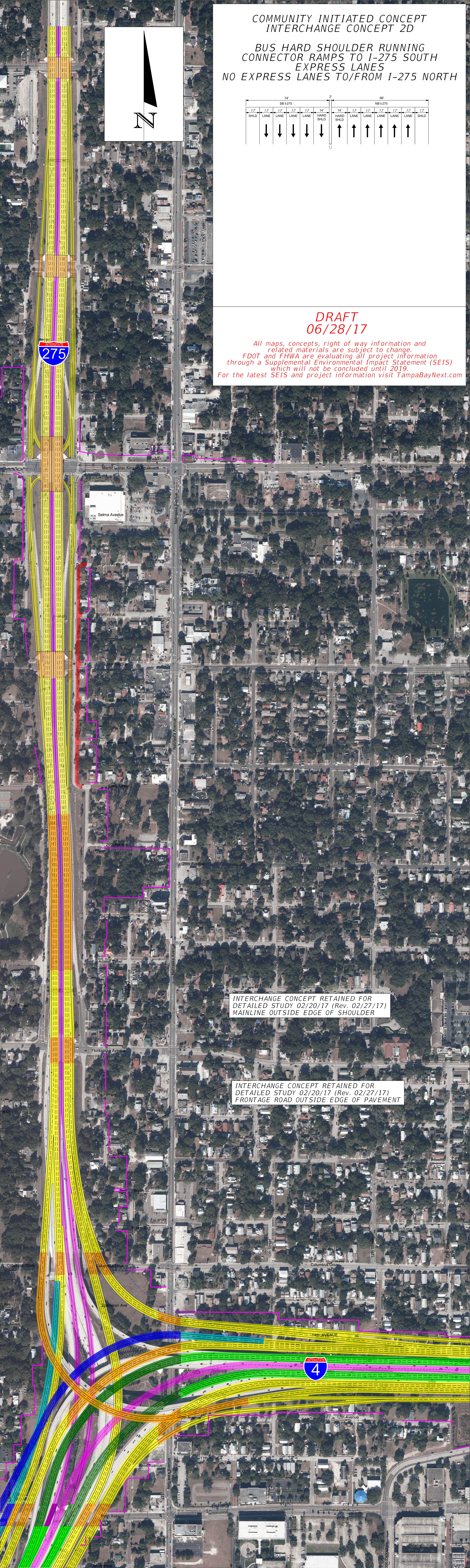
COMMUNITY INITIATED CONCEPT  
INTERCHANGE CONCEPT 2D

BUS HARD SHOULDER RUNNING  
CONNECTOR RAMPS TO I-275 SOUTH  
EXPRESS LANES  
NO EXPRESS LANES TO/FROM I-275 NORTH



DRAFT  
06/28/17

All maps, concepts, right of way information and related materials are subject to change. FDOT and FHWA are evaluating all project information through a Supplemental Environmental Impact Statement (SEIS) which will not be concluded until 2019. For the latest SEIS and project information visit [TampaBayNext.com](http://TampaBayNext.com)



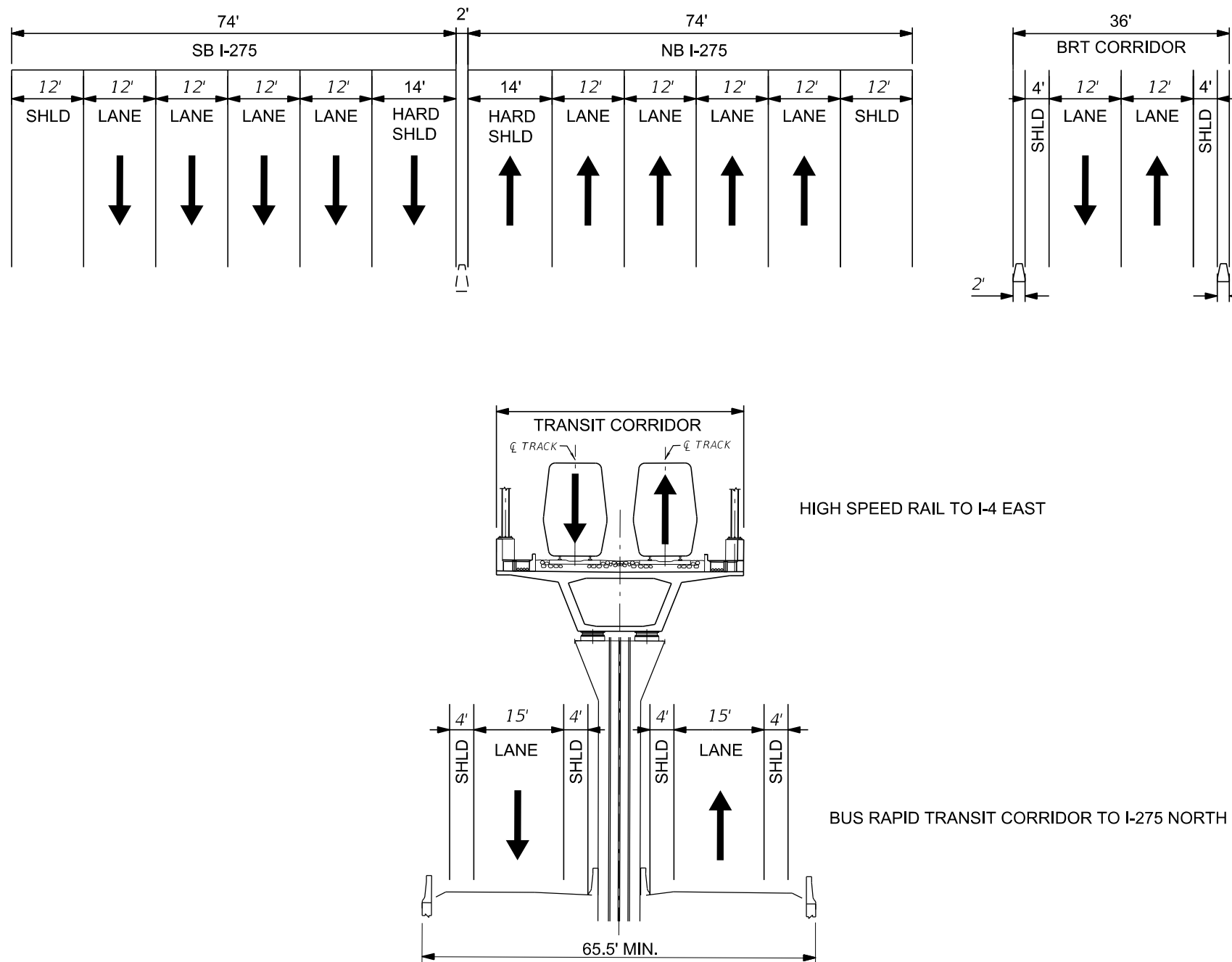
INTERCHANGE CONCEPT RETAINED FOR  
DETAILED STUDY 02/20/17 (Rev. 02/27/17)  
MAINLINE OUTSIDE EDGE OF SHOULDER

INTERCHANGE CONCEPT RETAINED FOR  
DETAILED STUDY 02/20/17 (Rev. 02/27/17)  
FRONTAGE ROAD OUTSIDE EDGE OF PAVEMENT



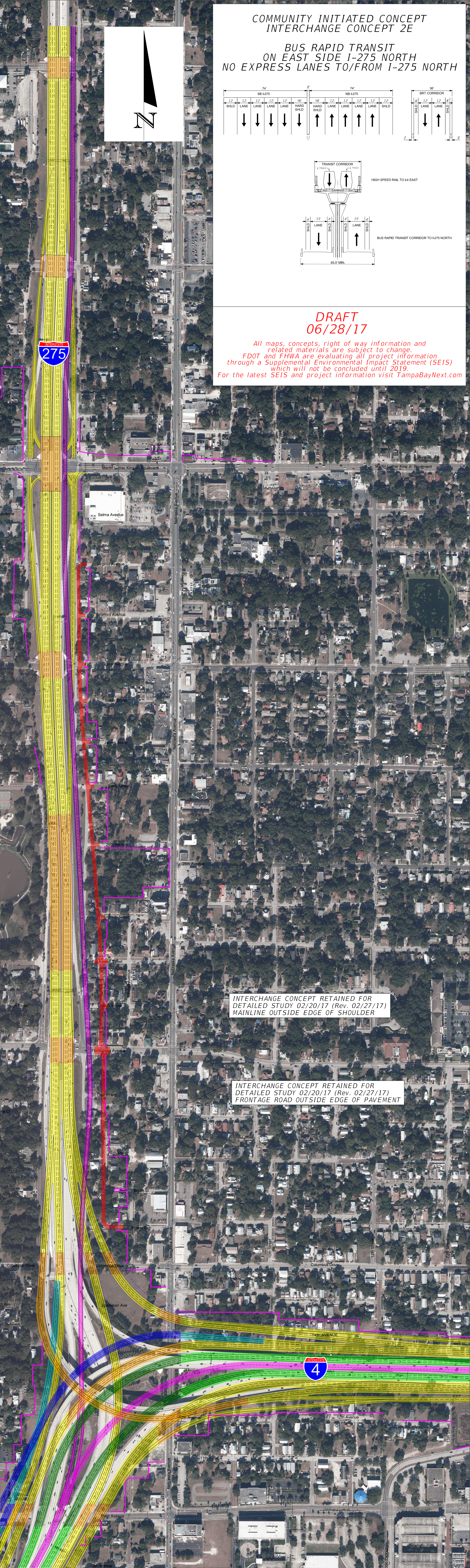
COMMUNITY INITIATED CONCEPT  
INTERCHANGE CONCEPT 2E

BUS RAPID TRANSIT  
ON EAST SIDE I-275 NORTH  
NO EXPRESS LANES TO/FROM I-275 NORTH



DRAFT  
06/28/17

All maps, concepts, right of way information and related materials are subject to change. FDOT and FHWA are evaluating all project information through a Supplemental Environmental Impact Statement (SEIS) which will not be concluded until 2019. For the latest SEIS and project information visit [TampaBayNext.com](http://TampaBayNext.com)



INTERCHANGE CONCEPT RETAINED FOR  
DETAILED STUDY 02/20/17 (Rev. 02/27/17)  
MAINLINE OUTSIDE EDGE OF SHOULDER

INTERCHANGE CONCEPT RETAINED FOR  
DETAILED STUDY 02/20/17 (Rev. 02/27/17)  
FRONTAGE ROAD OUTSIDE EDGE OF PAVEMENT