

Interstate Modernization Projects

- Gateway Expressway Project FPID: 43380-1-52-01 & 424501-52-01
- I-275 Pinellas Corridor FPID: 424501-1-32-01
- Howard Frankland Bridge FPID 4229042 Pinellas; 4229044 Hillsborough
- Westshore Area Interchange FPID 4335357; 4340452
- Downtown Interchange FPID 4338212
- I-275 North Corridor FPID 4318212
- I-4 and Connector FPID 4317463
- I-75 North Corridor FPID 419235-6
- I-75 South Corridor FPID 419235-5
- Supplemental Environmental Impact Statement (SEIS) Limits FPID 258337-2

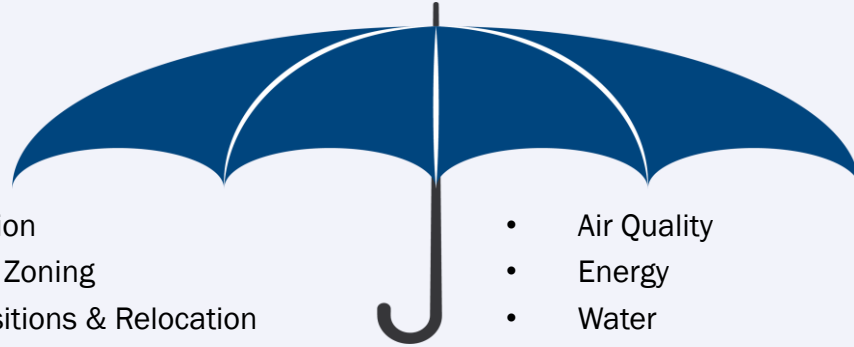


NEPA

An integrated decision-making process



NEPA Umbrella



- Transportation
- Land Use & Zoning
- Land Acquisitions & Relocation
- Socioeconomics & Economic Development
- Environmental Justice
- Neighborhoods & Community Facilities
- Parks & Recreational
- Historical & Archeology
- Noise & Vibration
- Visual & Aesthetics
- Air Quality
- Energy
- Water
- Ecologically Sensitive Areas
- Hazardous Materials
- Safety & Security
- Utilities
- Temporary Construction Impacts
- Indirect & Cumulative Effects

Other Laws/Regulations

- Section 4(f)
 - Parks, Recreation Areas
- Section 6(f)
 - Land and Water Conservation Areas
- Section 7
 - Rare, Threatened, Endangered Species
- Section 106
 - Historic Properties
- Section 404
 - Fill material into waters including wetlands
 - Executive Order 11988 and 11990
 - Floodplains, Wetlands
- Executive Order 12898
 - Environmental Justice

Tampa Interstate Study SEIS

A project's environmental impacts, engineering considerations, and public comments feed FDOT's decision-making process. This graphic lists the various documents that FDOT will prepare as a part of this process. Draft documents will be available at the December 10 & 13, 2018 Public Workshop.

Sociocultural Effects

- SCE Tech Memo (includes Environmental Justice and Economic Considerations)
- Cultural Resources
- Conceptual Relocation Plan

Natural and Physical Effects

- Air Quality Tech Memo
- Natural Resources Evaluation
- Noise Tech Memo
- Contamination Screening

Engineering Considerations

- Preliminary Engineering
- Traffic Tech Memo
- Pond Siting

Public Outreach

- Public and Agency Coordination Plan
- Comments and Coordination Tech Memo
- Small Group Meetings
- Public Workshop/Hearing

Sociocultural Effects (SCE) Evaluation

FDOT conducts a Sociocultural Effects (SCE) Evaluation to assess a project's potential effects on these factors in a defined study area:

Sociocultural Effects (SCE)					
Social	Economic	Land Use	Mobility	Aesthetics	Relocation
<ul style="list-style-type: none">• Demographics• Community Cohesion• Safety• Community Goals/ Quality of Life• Special Community Designations	<ul style="list-style-type: none">• Business & Employment• Tax Base• Traffic Patterns• Business Access• Special Needs Patrons	<ul style="list-style-type: none">• Land Use- Urban Form• Plan Consistency• Growth Trends & Issues• Focal Points	<ul style="list-style-type: none">• Mobility Choices• Accessibility• Connectivity• Traffic Circulation• Public Parking	<ul style="list-style-type: none">• Noise/ Vibration• Viewshed• Compatibility	<ul style="list-style-type: none">• Residential• Non-Residential• Public Facilities

SCE Document Prep

Topic No. 650-000-001
Project Development and Environment Manual
Sociocultural Effects Evaluation

Feb 2018-JSN

Effective: June 14, 2017

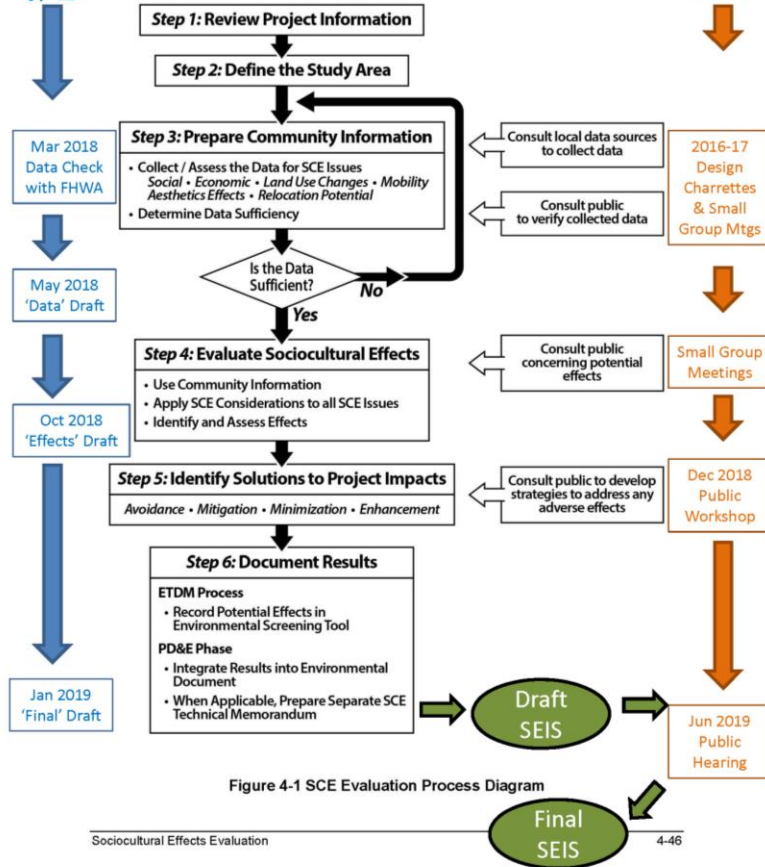


Figure 4-1 SCE Evaluation Process Diagram

Sociocultural Effects Evaluation

A Sociocultural Effects (SCE) evaluation assesses:

- Social;
- Economic;
- Land Use Changes;
- Mobility;
- Aesthetic Effects; and
- Relocations, including potential issues associated with Environmental Justice (EJ), Civil Rights, and other nondiscrimination laws.

There are six major steps in an SCE evaluation process:

- Review Project Information;
- Define the Study Area;
- Prepare Community Information;
- Evaluate Sociocultural Effects;
- Identify Solutions to Project Impacts; and
- Document Results.

Natural and Physical Environment

FDOT evaluates a project's potential effects on the natural and physical environment, including the following:

Natural Environment

- Wetland and Other Surface Waters
- Wildlife and Habitat
- Aquatic Preserves and Outstanding Florida Waters
- Wild and Scenic Rivers
- Water Quality and Quantity
- Floodplains
- Coastal Zone Consistency
- Coastal Barrier Resources
- Protected Species and Habitat
- Essential Fish Habitat

Physical Environment

- Noise
- Air Quality
- Contamination
- Utilities and Railroads
- Bicycle and Pedestrian
- Construction
- Navigation

Operations and Access

FDOT conducts an analysis on existing traffic and conditions to assess a project's potential effects on future traffic operations and access.

Traffic Tech Memo

- Existing Traffic Signal Timing
- Existing Roadway Conditions
 - Typical Sections
 - Major Intersection Configuration
 - Crash Analysis & Trends
- Existing AADT Volumes
- Existing Year Level of Service
 - Daily
 - Peak Hour Directional Volumes
 - Intersection
- Traffic Forecast Methodology
- Future Conditions

Preliminary Engineering Report

- Project Summary
- Project Description
- Purpose & Need
- Commitments
- Description of Recommended Alternatives
- Existing Conditions
- Design Controls & Criteria
- Alternatives Analysis
- Public Involvement/Project Coordination
- Recommended Alternatives

Original TIS Commitments

Urban Design Guidelines

Sound Walls

Historic Preservation

Tampa Heights Greenway

Bicycle and Pedestrian

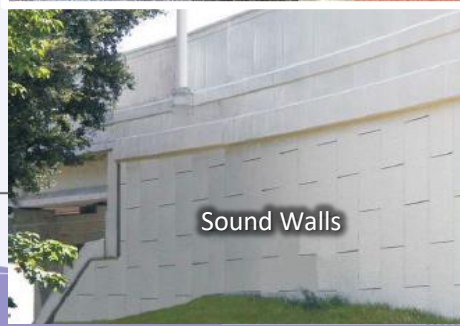
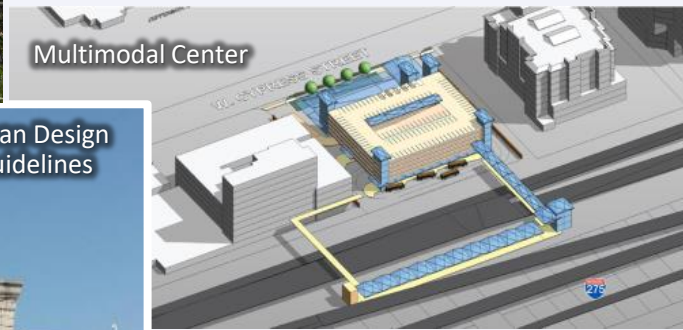
Multimodal Center

Construction Techniques

HART North Terminal*

Parks and Rec Facilities

**Fulfilled or no longer applicable.*



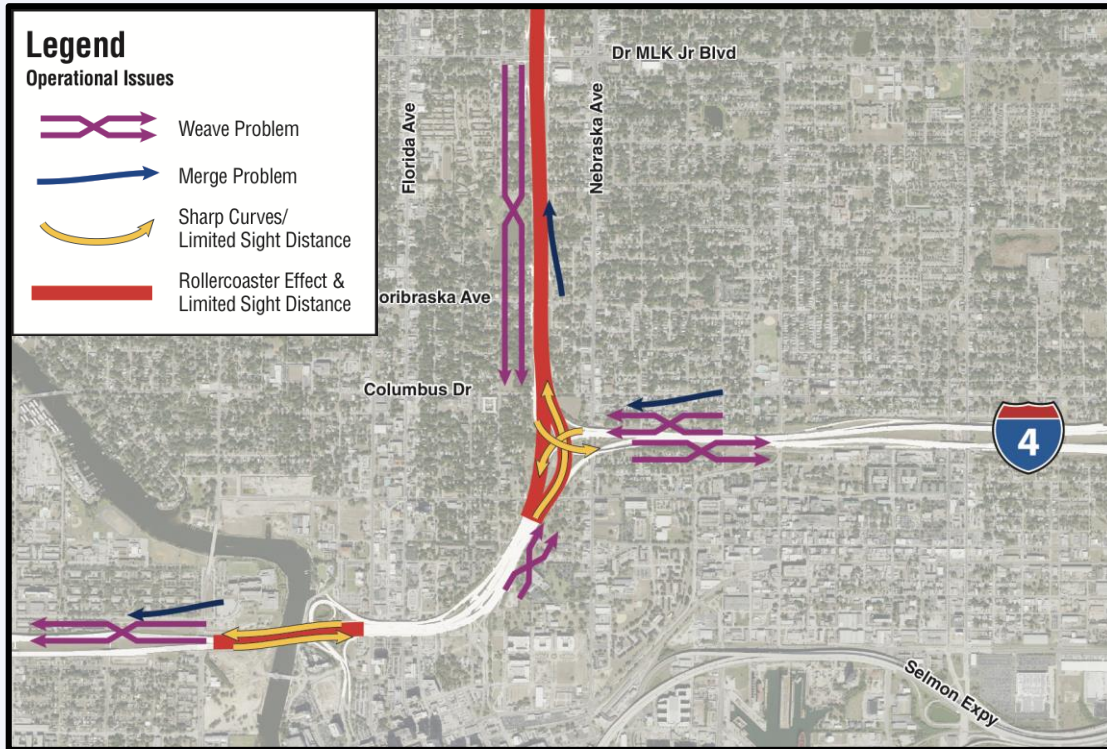
Community Ideas/Opportunities*



*Community Ideas from 2016 Design Charrettes



SEIS Update



What Problems Are We Trying to Solve?

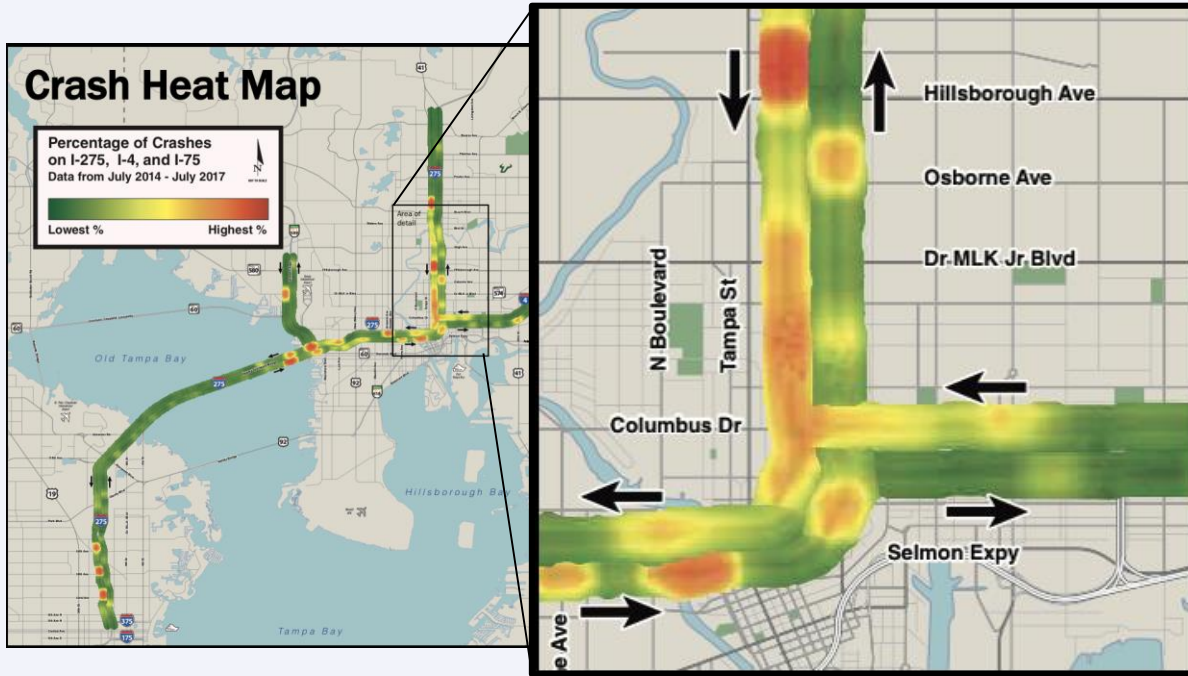
Traffic Operations

Legend

Operational Issues

- Weave Problem
- Merge Problem
- Sharp Curves/
Limited Sight Distance
- Rollercoaster Effect &
Limited Sight Distance

What Problems Are We Trying to Solve?



Safety

Operational issues and congestion contribute to safety problems.

Sections of I-275 and I-4 are identified as severe crash corridors in Hillsborough MPO's Vision Zero Action Plan.

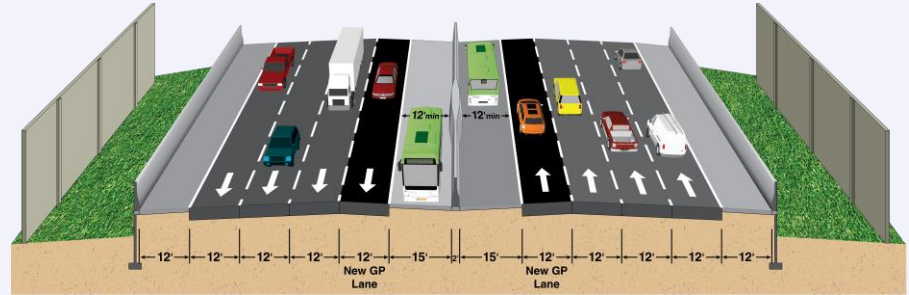


I-275 North

Removed express lanes from consideration on I-275 north of downtown Tampa



Evaluating near-term improvements within the existing Right of Way – to include noise walls and opportunities for transit integration



From north of MLK Blvd to north of Bearss Ave.